

HC-T010-WIFI Series Thermostat

User Guide



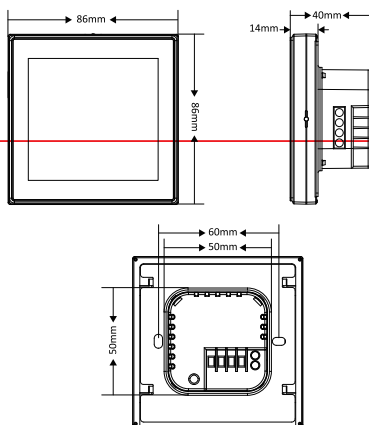
For Water Heating/Boiler/Electric Heating

MODEL DEFINITION

GA: Water heating, 5A GB: Electric floor Heating, 16A
GC: Water/Gas Boiler, 5A L: Backlight
P: Weekly Programmable W: Wi-Fi
S2: Both internal sensor and floor external sensor

For example: HC-T010-WIFI-GCLP

DIMENSION

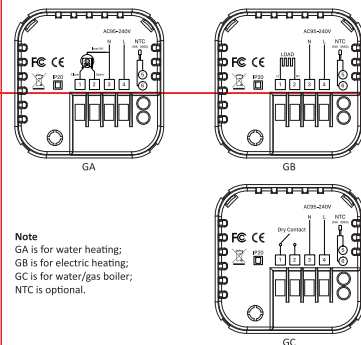


BEFORE WIRING AND INSTALLING

1. Read these instructions carefully. Failure to follow them could damage the product or cause a hazardous condition.
2. Check the ratings given in the instructions and on the product to make sure the product is suitable for your application.
3. Installer must be a trained, experienced service technician.
4. After installation is complete, check out product operation as provided in these instructions.

CAUTION: Electrical Shock or Equipment Damage Hazard. Can shock individuals or short equipment circuitry. Disconnect power supply before installation.

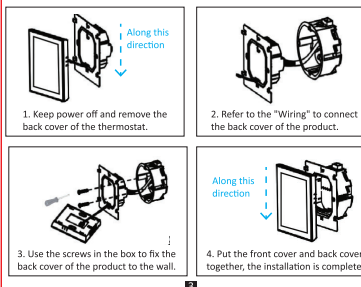
WIRING



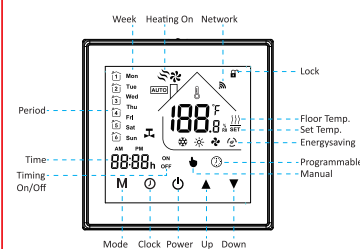
Note
GA is for water heating;
GB is for electric heating;
GC is for water/gas boiler;
NTC is optional.

INSTALLATION

Your thermostat is suitable for installation within a standard 86mm pattress box or European 60mm pattress box.



HOME SCREEN QUICK REFERENCE



OPERATION

1. **Power On/off:** Press "⏻" to turn the thermostat on/off.
2. **Mode switch among "Manual/Programmable/ECO"**
Touch "M" (mode) to change among "Manual/Programmable/ECO". In the manual mode, "M" will display in the bottom of the screen; In programmable mode, "⌚" will display in the bottom of the screen; In ECO mode, "⚡" will display in the right side.
3. **Setting Temperature**
In the mode of ECO and programmable, set temperature, time could not be adjusted. If the user want to change, please go to manual mode. In the mode of manual, press "▲" and "▼" set the desired temperature. When the thermostat is turned on, press and hold "▲" 5 seconds to switch the temperature mode, Celsius (°C) or Fahrenheit (°F).
4. **Adjusting/Setting the Time**
Touch the icon "⌚" to set minute, hour and weekday by using "▲" and "▼". Press "⏻" once more to confirm and exit.
5. **Locking your Thermostat**
Press and hold "▲" and "▼" 5 seconds to lock/unlock your thermostat.

6. Adjusting/setting the Program Schedules

When Wi-Fi connection is made, your thermostat will automatically accept the program schedule made via the APP on your device (see below for detailed instructions). To set the program schedules through your thermostat (NOT via your smartphone/tablet) simply follow the instructions as below:

Note: In any of Manual/Programmable/ECO" modes, touch "⌚" key can enter the setting of program schedule.

Touch "⌚" key 4 times to enter programming setting (The first three times are set to the current time and week).
Use "▲" and "▼" to adjust each value, and then press "⏻" to switch between 1~6 Period, time and temperature.

After finishing the above settings, press "⏻" to exit the programming mode.

Default setting for program schedule

Period	Working days (Monday to Friday)		Saturday		Sunday	
	Time	Temp.	Time	Temp.	Time	Temp.
Period 1	06:00	20 °C	06:00	20 °C	06:00	20 °C
Period 2	08:00	15 °C	08:00	20 °C	08:00	20 °C
Period 3	11:30	15 °C	11:30	20 °C	11:30	20 °C
Period 4	13:30	15 °C	13:30	20 °C	13:30	20 °C
Period 5	17:00	22 °C	17:00	20 °C	17:00	20 °C
Period 6	22:00	15 °C	22:00	15 °C	22:00	15 °C

7. Checking the Temperature of Floor Sensor

Press and hold the arrow "▼" for 5 seconds to display the temperature of floor sensor.

8. Setting the Advanced Features

Turn off the thermostat, press "M" and "⌚" buttons at the same time for 5 seconds to enter the advanced features setting, press "M" button For Function selection, press "▲" and "▼" to adjust individual functions.

All high level option settings will take effect automatically after restarting the thermostat.

Code	Function	Setting and options	Default
1	Temperature Compensation	-9 °C to +9 °C (for internal sensor)	-1
2	Temperature Deadzone	1 °C ~ 5 °C	1
3	Button Locking	00: All buttons are locked except power button. 01: All buttons are locked.	01
4	Sensor Types	In: Internal Sensor (to control or limit the temp.) Out: Only external sensor AL: Internal/ External Sensor (Internal sensor to control the temp., external sensor to limit the temp.)	AL
5	Min. Set Temp.	5 °C ~ 15 °C	05
6	Max. Set Temp.	15 °C ~ 45 °C	35
7	Display Mode	00: Display both set temp. and room temp. 01: Display set temp. only	00
8	Low Temperature Protection Setting	0 °C ~ 10 °C	00
9	High Temperature Protection Setting	25 °C ~ 70 °C	45
A	Economy Mode	00: Non-energy saving mode 01: Energy saving mode	0
B	Economy Temperature Range	0 °C ~ 30 °C	20

FCC Caution:
This device complies with part 15 of the FCC Rules. Operation is subject to the following two conditions: (1) this device may not cause harmful interference, and (2) this device must accept any interference received, including interference that may cause undesired operation. Any changes or modifications not expressly approved by the party responsible for compliance could void the user's authority to operate the equipment.
NOTE: This equipment has been tested and found to comply with the limits for a Class B digital device, pursuant to Part 15 of the FCC Rules. These limits are designed to provide reasonable protection against harmful interference in a residential installation. This equipment generates, uses and can radiate radio frequency energy and, if not installed and used in accordance with the instructions, may cause harmful interference to radio communications. However, there is no guarantee that interference will not occur in a particular installation. If this equipment does cause harmful interference to radio or television reception which can be determined by turning the equipment off and on, the user is encouraged to try to correct the interference by one or more of the following measures:
-- Reorient or relocate the receiving antenna.
-- Increase the separation between the equipment and receiver.
-- Connect the equipment into an outlet on a circuit different from that to which the receiver is connected.
-- Consult the dealer or an experienced radio/TV technician for help.
To maintain compliance with FCC's RF Exposure guidelines, This equipment should be installed and operated with minimum distance between 20cm the radiator your body. Use only the supplied antenna.
FCC ID: 2A3448AB20164938688

WELCOME

Thank you for your purchase.

Your new thermostat will provide uniform and comfortable temperature control throughout every room in your property. We bring together technology, craftsmanship and the highest quality materials to provide you with a safe reliable product combined with sleek contemporary design. Please read this installation/programming manual for comprehensive instructions on installing and operating your thermostat. Please also ensure a suitably qualified person installs your thermostat and complies with all local regulations.

IN THE BOX YOU WILL FIND

Thermostat	1 pc	Screws	2 pcs
User Guide	1 pc	QC Passed	1 pc
Floor sensor	1 pc		

ABOUT YOUR THERMOSTATS

The HC-T010-WIFI series range has been developed to control electric underfloor, water heating or water/gas boiler systems. These units are designed for use in commercial, industrial, civil and domestic properties.

FEATURES

On Appearance

1. Convenient operation creates convenient life.
2. Fashion design blends in with any decor.
3. Touch Screen display with backlight is easy to read, even in the dark.
4. Bright buttons always remind you the world truly exist.
5. Easy UI interface could be used even by child.
6. Optionals of black and white housing.

On Functionality

1. Remote control by Tuya App.
2. 0.5°C Accuracy keeps temperature within the level you set.
3. Data memory when power is off.
4. 5+2 six periods programmable maximize comfort and economy.
5. Create thermostat group to Centralized control
6. Integrated with Amazon Alexa, Google Assistant, etc.
7. All setting languages synchronize your time zone, address and language.
8. No limit to add rooms and support Smart Scene.

TECHNICAL DATA

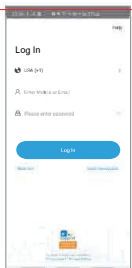
Power Supply: 95 ~ 240V AC, 50 ~ 60Hz
Current Load: 5A (water heating/water boiler/gas boiler), 16A (electric heating)
Sensor: NTC
Accuracy: +0.5 °C or +1 °F
Set Temp. Range: 5 °C ~ 35 °C
Display Temp. Range: 5 °C ~ 99 °C
Ambient Temp.: 0 °C ~ 45 °C
Ambient Humidity: 5 ~ 95 % RH (Non Condensing)
Storage Temp.: -5 ~ 45 °C
Power Consumption: <1.5W
Timing Error: <1 %
Shell Material: PC + ABS (flame retardant)
Protection Class: IP 20
Buttons: Capacitive Touch Buttons

WI-FI CONNECTION

1. Scan the QR code to download "eWeLink" App, or you can also search keyword "eWeLink" at App Store or Google play to download App.



2. Open "eWeLink", log in or register your account with your mobile number. Type in the verification code sent to your mobile, then set your login password.



3. Note: The thermostat support two pairing modes, you can choose according to the actual situation.

EZ pairing mode: EZ mode allows for rapid networking, with high performance requirements for Wi-Fi signal strength, routers, mobile phones or management devices, as shown below.

After turning off the thermostat, press and hold the "▼" button for 10 seconds, when the icon fast flash, that stand for the device enter into pairing mode.

Then open eWeLink app, click "Add advice" to add devices, choose "quick pairing", select "Add one device", then choose the suitable Wi-Fi network and enter the password, click "next", then the thermostat will enter automatic connection state, complete the Wi-Fi connection of the thermostat.

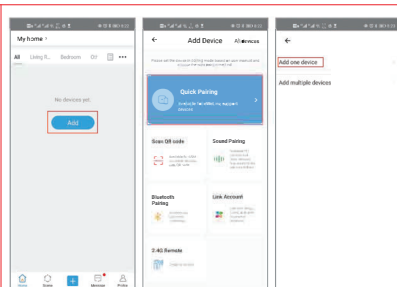


Figure 1

Figure 2

Figure 3

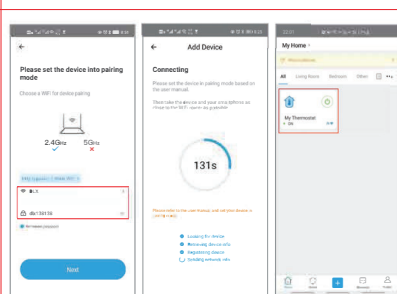


Figure 4

Figure 5

Figure 6

AP pairing mode: AP mode compatibility is good, Wi-Fi signal strength, router, mobile phone or management equipment performance requirements are low, the operation is shown below.

After turning off the thermostat, press and hold the "▼" button for 10 seconds, when the icon fast flash, press and hold the "▼" button for another 10 seconds, when the icon appears, that stand for the thermostat enter AP pairing mode.

Open eWeLink app, click "Add" to add device, choose "quick pairing", select "Add one device", choose the suitable Wi-Fi network and enter the password, click "next", then click "Connect", your phone will automatically enter Wi-Fi settings interface, choose the Wi-Fi signal "ITEAD-xxxx", enter the password in the figure 5, then reopen eWeLink app, click "Next" to enter automatic connection state, complete the Wi-Fi connection of the thermostat.

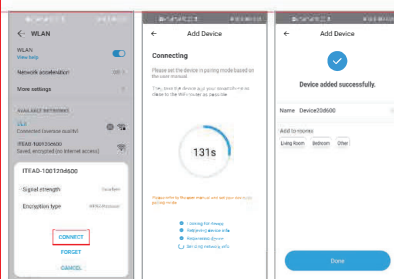


Figure 7

Figure 8

Figure 9

PROGRAMMING YOUR THERMOSTAT

After a successful connection, it will enter the thermostat setting interface, as shown in Figure 10. You can make relevant settings according to your needs.

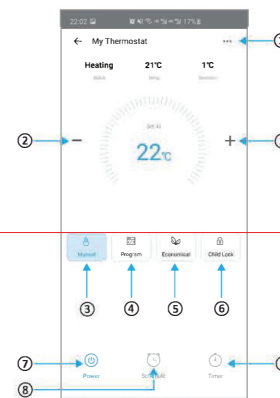


Figure 10

1. Settings.
2. Adjust the temperature, the temperature will show in the centre.
3. Manual button: In this mode, the thermostat can control the temperature by manual adjustment.
4. Program button: In this mode, the thermostat will follow the programmed heating time period and temperature for temperature control.
5. Economical button: In this mode, the temperature will be keep 20 degree. This temperature can not be changed or adjusted.
6. Turn on this function, the thermostat buttons are locked and can not be operated.
7. Power on/off button, press it, turn on the device, press it again, turn off the device.
8. Schedule
9. Timing On/Off

About Program

You can set it on weekdays or weekend, and then set the time / temperature and adjust it according to your work schedule. You can set 6 periods (time and temperature), as shown in figure 11. Once your schedule has been set, click save and the application will transfer the programmed data to the thermostat and the plan has been saved.

Add Third-party Control

Click the icon to enter the Advanced features interface. You can add third-party control, such as Amazon Echo or Google Home. (Figure 12)

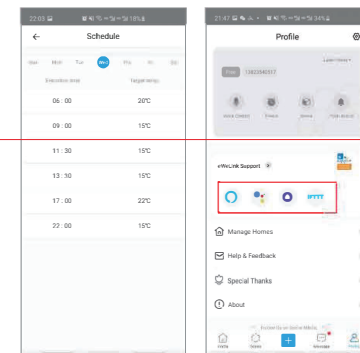


Figure 11

Figure 12

About Economical Mode

The ECO mode is disabled by default, if the user want to use this function, please go to advanced features to enable it. Then touch "M" key on the thermostat to switch among "Manual/Programmable/ECO" modes.

SIMPLE EXCEPTION HANDLING

No.	No Phenomenons Handling	Handling
1	Power is on but without display.	Check if the terminals between LCD panel and Power Unit Box is loosen.
2	Without output but display works.	Use a new LCD panel or new Power Unit Box to replace the old one.
3	Room Temp. is a little different from the actual.	Do temperature calibration in item 1 of Advanced Features
4	"EZ" is displayed on eWeLink App operation Interface	Enter the advanced function and set the "Sensor Type" to "Internal Sensor"