

S61STPF-PM-O Operation Guide



Introduction

The S61STPF-PM-O is an EU-standard outdoor plug based on Matter over Wi-Fi technology, utilizing a 2.4GHz Wi-Fi connection. This plug features an IP44 protection rating, effectively preventing dust ingress and water splashes from any direction. Before use, please ensure that your load device and its plug have an equivalent waterproof rating. It is suitable for outdoor environments such as gardens, pools, and irrigation systems, providing stable power support.

Product Type	Matter Over WiFi Smart Outdoor Plug
Product Name	S61s Outdoor(Type-F)
Product Model	S61STPF-PM-O

Highlights

- **IP44 Protection Rating**

This outdoor smart socket meets IP44 protection standards and comes with a protective cover, effectively blocking dust and splashing water from any direction, ensuring a long-lasting and safe outdoor power supply. Usage scenarios: outdoor grills, gardening tools (pool pumps, garden lights, fountains).

- **Matter Compatibility**

With Matter protocol support, S61STPF-PM-O ensures seamless integration with other brands and ecosystems, allowing you to build a unified and efficient smart home setup.

- **Energy Monitoring**

Visualize power consumption through intuitive charts and graphs, with access to historical electricity usage data. Easily reset statistics with a single tap when switching appliances for accurate tracking.

- **Electricity Bill Tracking**

Customize currency units to calculate electricity costs and view detailed billing breakdowns through clear visual charts, helping you monitor spending trends and manage budgets effectively.

- **Overload Protection**

Automatically cuts off power when current, voltage, or power exceeds user-defined safe limits, ensuring protection for both your devices and home electrical system.

- **Overcharge Protection**

Detects when a connected device is nearing full charge and automatically shuts off power to reduce battery cycle counts, extending battery lifespan, and promoting energy efficiency.

Specification

S61s Outdoor (Type F)	
Product Series	iPlug Outdoor
Product Name	Matter over Wi-Fi Smart Plug (EU Standard)
Model Number	S61STPF-PM-O

Rating	100–240V~ 50/60Hz 16A Max μ
Max Load	3840W
Wi-Fi	IEEE 802.11 b/g/n 2.4GHz
Net Weight	110g
Product Dimensions	58*58*100mm
Product Color	Gray, Orange
Housing Material	PC
Installation Location	Outdoor
Operating Altitude	Below 2000 meters
Operating Temperature	-20°C~50°C
Product Certifications	CE/RoHS

Key Features

eWeLink Platform

Device Home Page Functions		
Key Features		Feature Description
Energy Consumption	Power Consumption	To view real-time voltage/current/power for the day/month, device runtime, and total energy consumption.
	Electricity Bill Tracking	Supports custom currency units and electricity rates, and allows you to view detailed electricity bill breakdowns and trends through intuitive charts.
	Chart Visualization	Access historical data charts for "Energy Statistics" and "Electricity Bills".
	Data Export	Supports exporting historical data for "Energy Data" and "Electricity Bills".

Timer	Schedule	Execute specified actions at a scheduled time.
	Countdown	Execute specified actions after a set delay.
	Inch move	Automatically turn off / turn on after being on for a set duration.

Device Settings

Key Features		Feature Description
Assign Location		Set up the home and room where the device is located.
Share Device		The device can be shared with other eweLink accounts.
Third-party Platforms <i>(Add the device to the eWeLink app, then sync it to the corresponding third-party platform through account linking.)</i>	Alexa	voice control(open/close)
	Google Home	voice control(open/close)
	SmartThings	voice control(open/close)
	Alice	voice control(open/close)
	IFTTT	voice control(open/close)

Group Control	Create a group consisting of one or multiple devices of the same type to enable synchronous
---------------	---

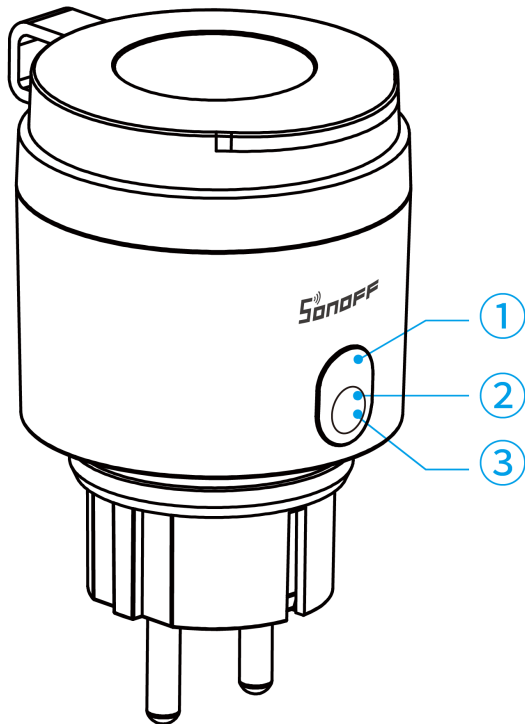
	devices of the same type to enable synchronous control for all devices within the group.
LAN Control	A control method where the app communicates directly with the device over the same router, without going through the cloud platform. <ul style="list-style-type: none"> • On/Off
Overload Protection	When the Load Parameters exceed the set threshold, power is cut off to the device, and remote power restoration is supported.
Reset Electricity Usage	Resetting electricity usage will delete historical data.
Indicator light	The indicator light mode can be switched between Auto, Off, and Night Mode. Night Mode requires setting a time period for deactivation.
Overcharge Protection	When the charging device approaches full capacity, its output power will continuously fall below a specific threshold. Then the socket will automatically turn off. This feature is designed to reduce the number of overcharge and discharge cycles for the device's battery, helping to extend its lifespan.
Power-On State	The state of a switch when power is restored after an interruption caused by a power outage or manual shutdown, designed to protect the equipment.
Push Notifications	Push the device's on/off status and power consumption to the user.
Logs	Records of device status changes.

Matter Platform

<i>Platforms and Capabilities</i>	Apple Home	Google Home	Alexa	SmartThings	Home Assistant
App Remote Control	√	√	√	√	√
Voice Control	√	√	√	√	√
Smart Scene	√	√	√	√	√
Power/Energy Monitoring	×	×	×	√*	√*

*Note: Please upgrade the firmware to V1.0.5 or above in the eWeLink app to enable "Energy Consumption" data on Samsung SmartThings and Home Assistant.

Installation and Configuration Guide



① Button

- Short-press once: Turn the device on or off
- Long press for 5 seconds: Device enters pairing mode (pairing duration: 10 minutes)

② Wi-Fi LED Indicator (Blue)

eWeLink Mode

- Two short flashes followed by one long flash: Device is in pairing mode
- Constantly off: Device is online
- Single flash: Device is offline
- Double flash: LAN mode

Matter Mode

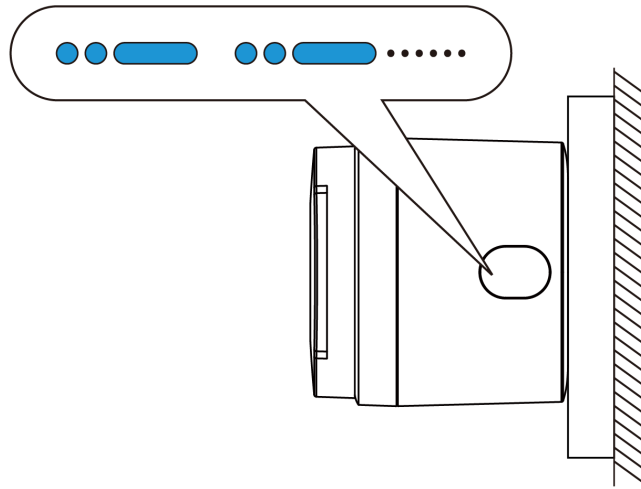
- Two short flashes followed by one long flash: Device is in pairing mode
- Constantly off: Device is online
- Single flash: Device is offline

③ Power Indicator (Red)

- Light on: Device is on
- Light off: Device is off

Powering On

When the device is first used, it will enter pairing mode by default after power-on. At this time, the Wi-Fi indicator flashes with "two short flashes followed by one long flash."



ⓘ If pairing is not completed within 10 minutes, the device will exit pairing mode. To re-enter, long-press the device button for 5 seconds until the Wi-Fi indicator flashes with two short flashes followed by one long flash.

Matter Ecosystem User Guide

Open a Matter-compatible App and scan the Matter QR code on the device body to add the device.



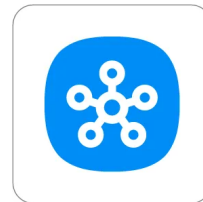
Add to Apple
via Matter



Add to
Google via
Matter



Add to Alexa
via Matter



Add to
SmartThings
via Matter



Add to Home
Assistant via
Matter

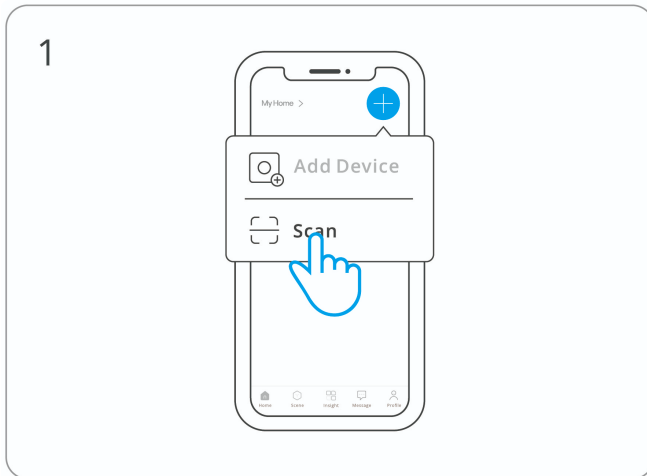
eWeLink Ecosystem User Guide

1. Download the eWeLink App

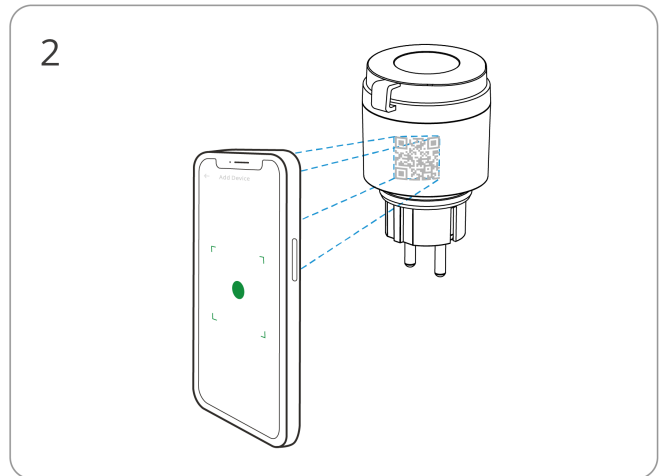
Please download the "eWeLink" App from the [Google Play Store](#) or [Apple App Store](#).

2. Add the Device

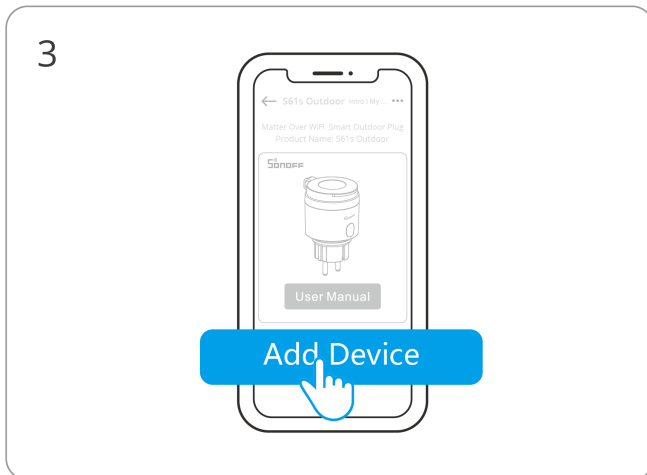
*Phone must connect to 2.4GHz Wi-Fi.



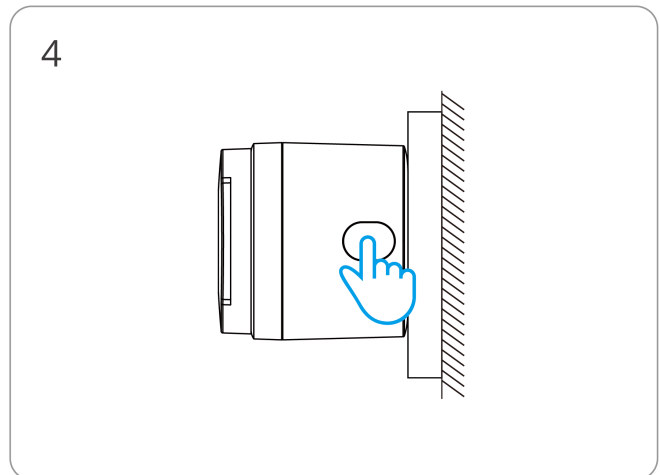
Enter "Scan"



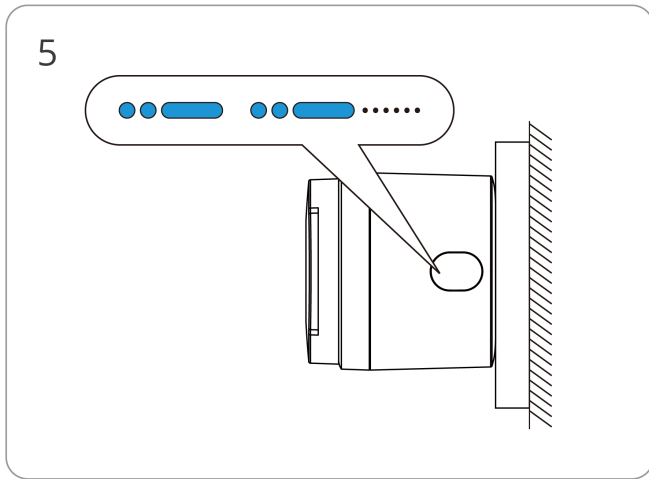
Scan the QR code on the device



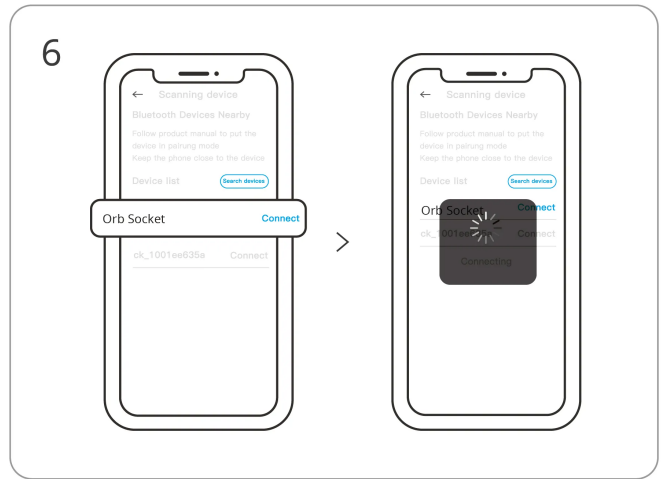
Select "Add Device"



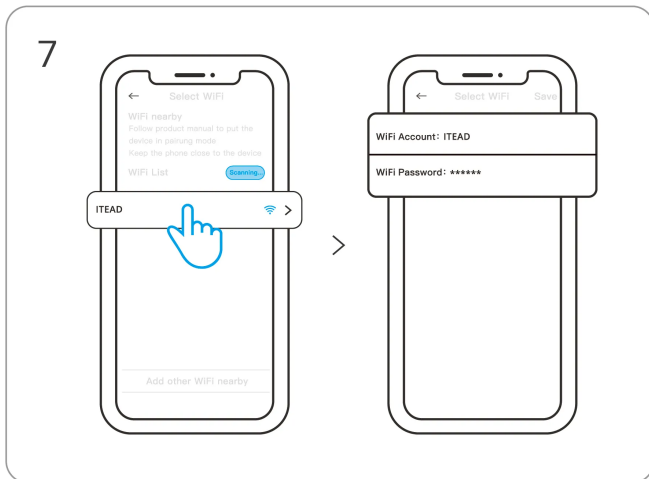
(If the device has exited pairing mode)
Long-press the device button for 5 seconds



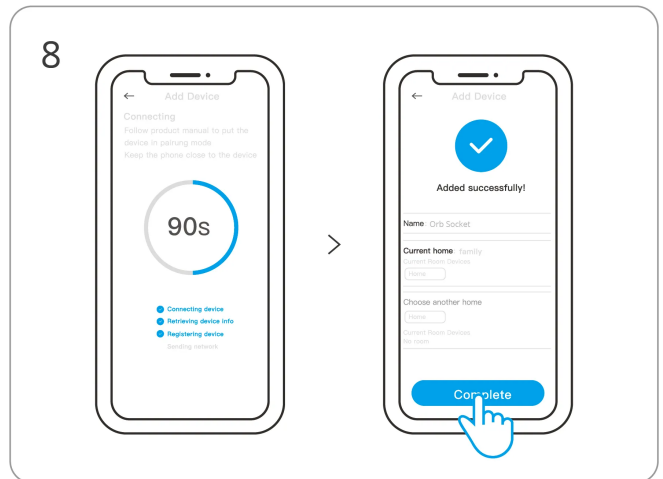
5
Check the Wi-Fi indicator flash status (two shorts, one long)



6
Search for device and connect



7
Select a 2.4GHz Wi-Fi network and enter the password



8
Device added successfully

Factory Reset (Dual Ecosystem)

Trigger conditions (any one condition met)

- After deleting the device in the eWeLink App
- A device that has been successfully paired in eWeLink is successfully paired again using another eWeLink account
- A device that has been successfully paired in Matter is successfully paired again via Matter Bluetooth pairing

FAQ

1. What is the recommended usage environment for the product?

When used outdoors, the product must be installed with a waterproof box. Additionally, the plug of the connected load device should have the same protection rating to ensure overall electrical safety.

2. Can I view energy statistics on Matter platforms?

Currently, energy statistics are only supported on Home Assistant and SmartThings platforms. Before use, please ensure that the device firmware has been updated to version 1.0.5 or later via the eWeLink App. Otherwise, only power values will be visible on these two platforms, and energy statistics will not be available.

3. Does it support monitoring solar panel power generation? / Does it support "bidirectional metering"?

Not yet. This feature is expected to be available by the end of June. Once released, users can update the firmware through the eWeLink App to enable bidirectional metering functionality.