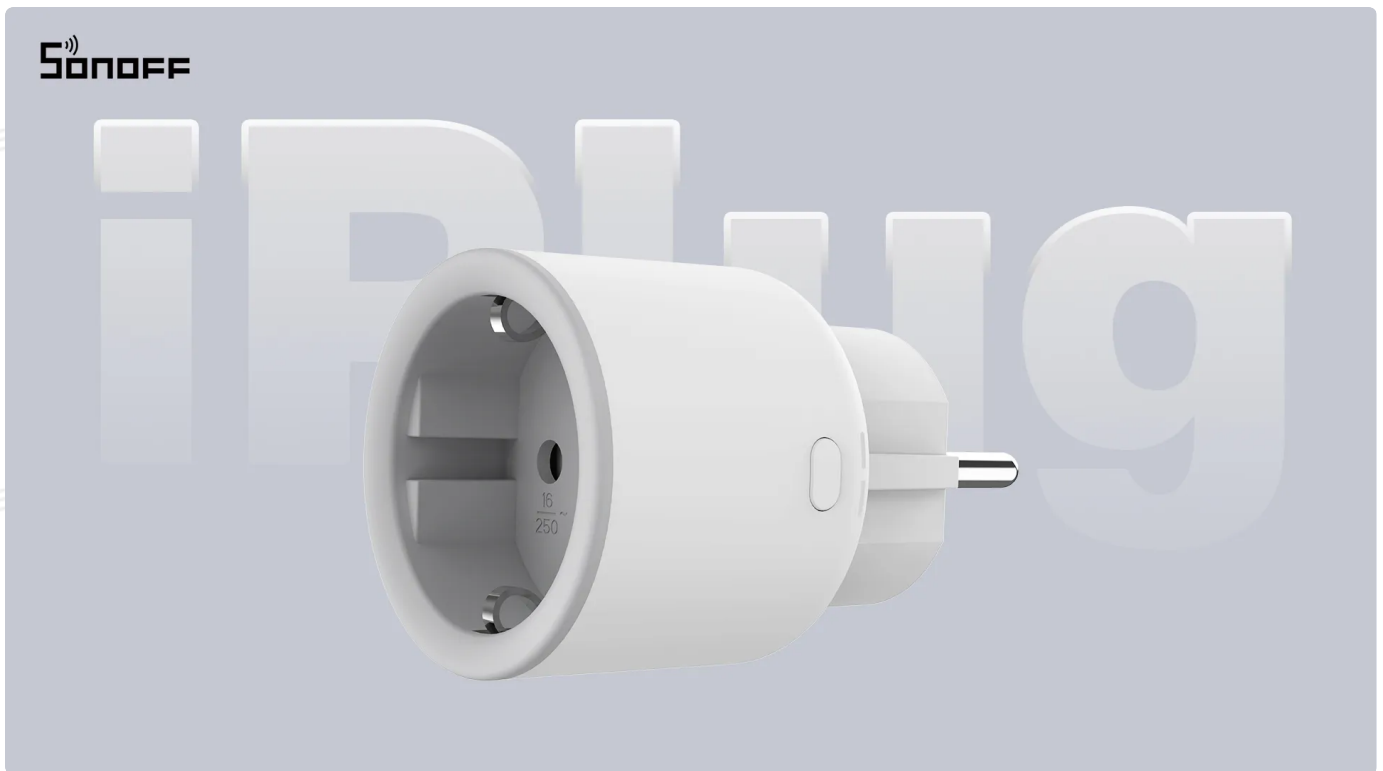


# User Manual S60ZBTPF (EN)



Zigbee Smart Plug

User Manual V1.1

## Introduction

The S60ZBTPF is a 16A single-channel smart plug with Zigbee protocol, featuring energy monitoring and overload protection. It allows users to monitor household power consumption via the app and automate home devices. Equipped with Zigbee repeater functionality, it enhances communication quality within the Zigbee network effortlessly.



Remote Control



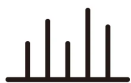
Timer Schedule



Voice Control



Smart Scene



Energy Overview



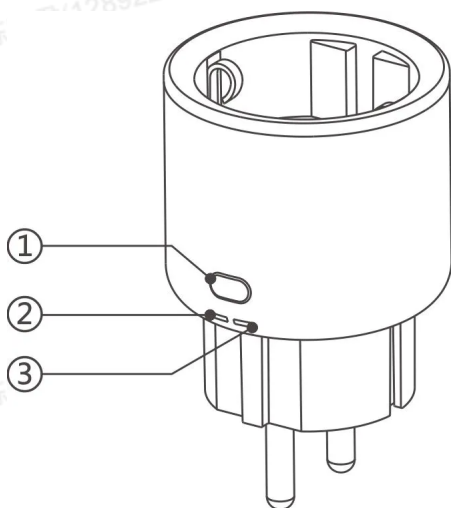
Over-load Protection



Repeater Device



Inching Mode



#### ① Button

Press once: Turn on/off the smart plug.

Press and hold for 5 seconds: Device enters the pairing mode.

#### ② Network indicator (Blue)

Steady on: Normal connection with the gateway.

Slow flash: The device is in pairing mode.

Fast flash: Abnormal connection with the gateway.

Quick flashing continuously: The device is in an overload protection lock state.

#### ③ Power LED indicator (Red)

Light on: The device is on.

Light off: The device is off.

## Compatible Voice Assistants



## Specification

Model	S60ZBTPF
MCU	TLSR8656
Input	250V~50/60Hz MAX 16A $\mu$
Max. Load	4000W
Wireless Connectivity	Zigbee3.0
Net Weight	83g
Dimension	50x50x61.5mm
Color	White
Casing Material	PC

Applicable Place	Indoor
Working Temperature	-10°C~40°C
Working Humidity	5%~95% RH, non-condensing
Certified Compliance	CE/RoHS

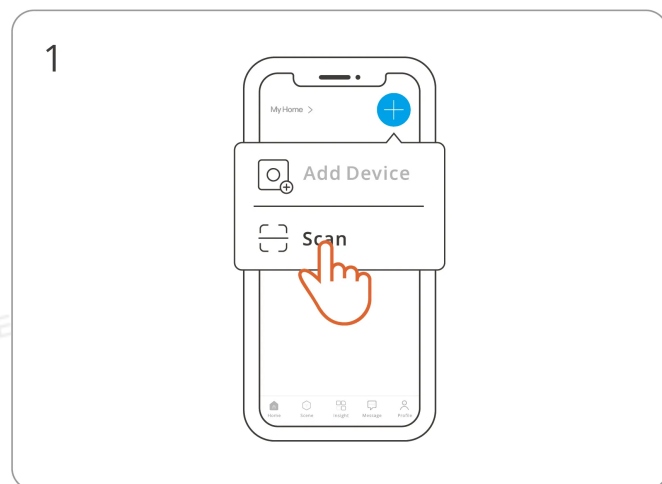
Note: To ensure the safety of your electrical installation, it's essential either a Miniature Circuit Breaker (MCB) or a Residual Current operated Circuit-breaker with Integral Overcurrent protection (RCBO) with an electrical rating of 16A has been installed before the plug.

## Download the eWeLink App & Add SONOFF Zigbee Gateway

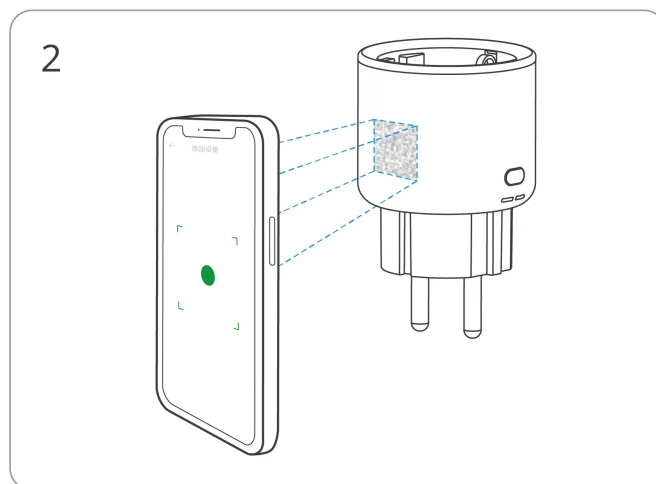
Please download the "eWeLink" App from Google Play Store or Apple App Store.



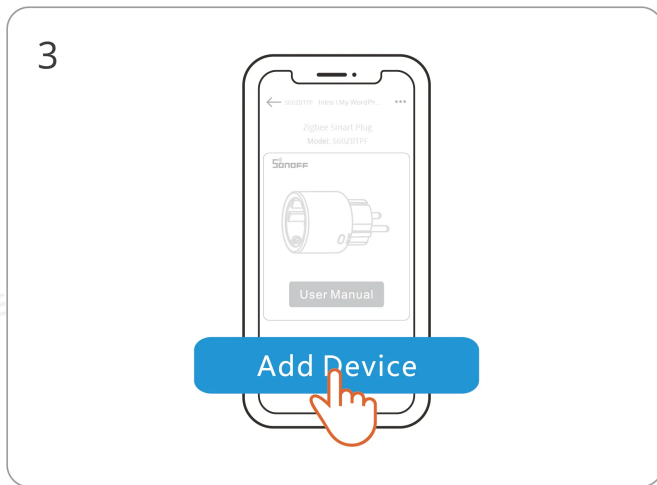
### Add Device



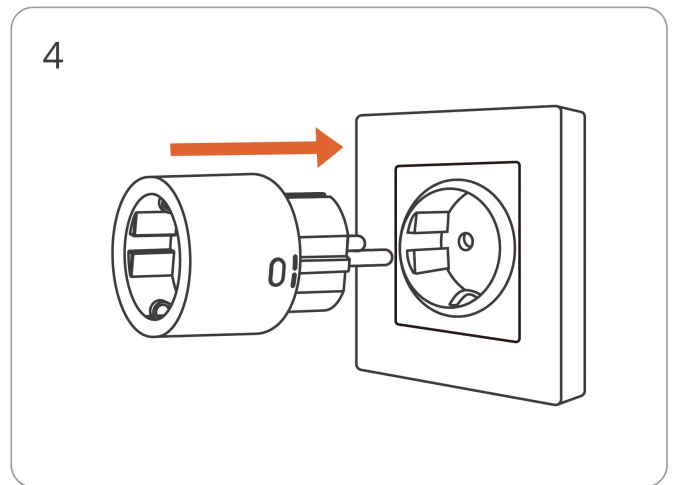
Enter "Scan"



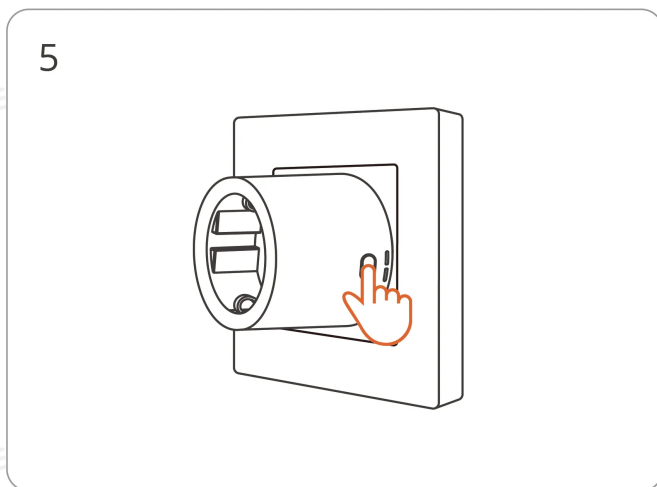
Scan the QR code on the device



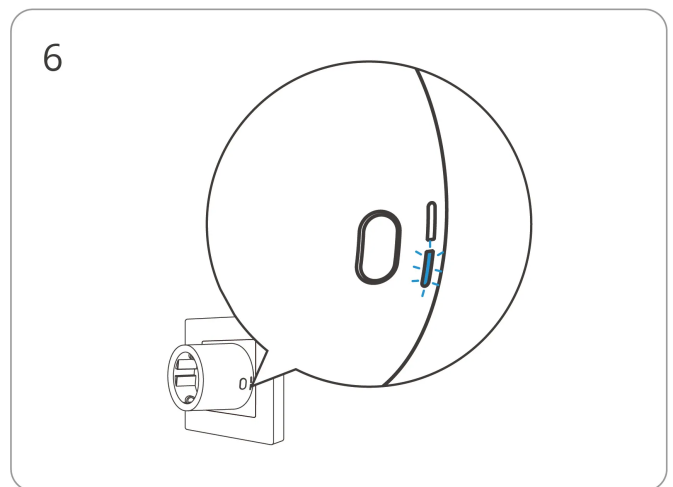
Select "Add Device"



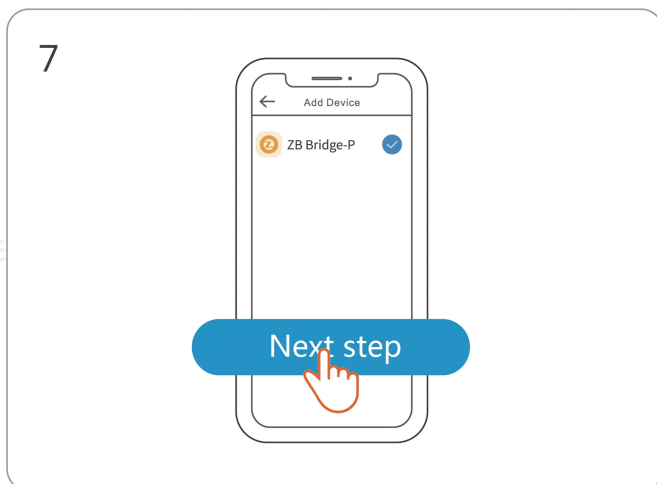
Power on the device



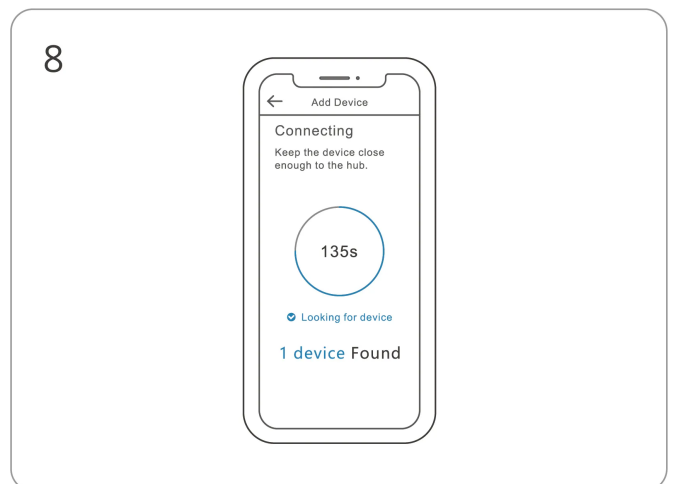
Long press the button for 5 seconds



The LED indicator flashes slowly for 180s



Select Zigbee gateway



Wait until the addition is done

## Matched Gateways

Recommended SONOFF gateway models: ZBBridge-P, NSPanel Pro, iHost, ZBBridge-U

\*Before adding a device, please upgrade the gateway firmware to the latest version.

Third-party compatible gateway models:

Amazon Gateway Model: Echo Plus 2nd

SmartThings Gateway Model: SmartThings Hub V3

\*Other gateways supporting ZigBee3.0 wireless protocol. Detailed information is in accordance with the final product.

## Factory Reset

(1) Press and hold the device button for 5 seconds to restore factory settings.

(2) Delete the device from the gateway and then restore factory settings.

## EU Declaration of Conformity

Hereby, Shenzhen Sonoff Technologies Co., Ltd. declares that the radio equipment type S60ZBTPF is in compliance with Directive 2014/53/EU. The full text of the EU declaration of conformity is available at the following internet address: <https://sonoff.tech/compliance/>

## For CE Frequency

EU Operating Frequency Range:

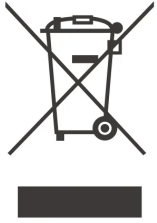
Zigbee: 2405–2480MHz

EU Output Power:

Zigbee≤10dBm

Scatola	Manuale
PAP 21	PAP 22
Carta	Carta
RACCOLTA DIFFERENZIATA	
Verifica le disposizioni del tuo Comune.	
Separa le componenti e conferiscile in modo corretto.	

## WEEE Disposal and Recycling Information



All products bearing this symbol are waste electrical and electronic equipment (WEEE as in directive 2012/19/EU) which should not be mixed with unsorted household waste. Instead, you should protect human health and the environment by handing over your waste equipment to a designated collection point for the recycling of waste electrical and electronic equipment, appointed by the government or local authorities. Correct disposal and recycling will help prevent potential negative consequences to the environment and human health. Please contact the installer or local authorities for more information about the location as well as terms and conditions of such collection points.

## Warning

1. Risk of electric shock, this product is not a toy and not intended for use by children. For adult use only.
2. The appliance is suitable for moderate climates only.
3. The ventilation must not be impaired by covering the appliance with items such as newspapers, table cloths, curtains, etc.
4. Naked flame sources, such as candles, must not be placed on the appliance.

Under normal use of condition, this equipment should be kept a separation distance of at least 20 cm between the antenna and the body of the user.



This product is only suitable for safe use at altitudes below 2000m.



Manufacturer: Shenzhen Sonoff Technologies Co., Ltd.

Address: 3F & 6F, Bldg A, No. 663, Bulong Rd, Shenzhen, Guangdong, China

ZIP code: 518000

Service email: support@itead.cc

Website: sonoff.tech

Made in China



FR

**Cet appareil  
se recycle**

À DÉPOSER  
EN MAGASIN



OU

À DÉPOSER  
EN DÉCHÈTERIE



Points de collecte sur [www.quefairedemesdechets.fr](http://www.quefairedemesdechets.fr)  
Privilégiez la réparation ou le don de votre appareil !

