

User Manual BASIC-ZB1GSP (EN)



Zigbee Smart Switch

User Manual V1.0

Introduction

The BASIC-ZB1GSP is a **single-channel smart metering switch designed for DIN rail mounting**. It is installed directly behind the **miniature circuit breaker (MCB)** in a domestic distribution board to provide safe control and smart management of a single circuit. The device supports core functions such as **remote switching, energy consumption monitoring and overload protection**, enabling users to gain a precise understanding of their electricity usage and to manage and optimise energy consumption remotely via an app or automation systems.



Remote Control



Energy Monitoring



Overload Protection



Relay Function



Voice Control



Smart Scene



Timer Schedule



Power-on State

① Button

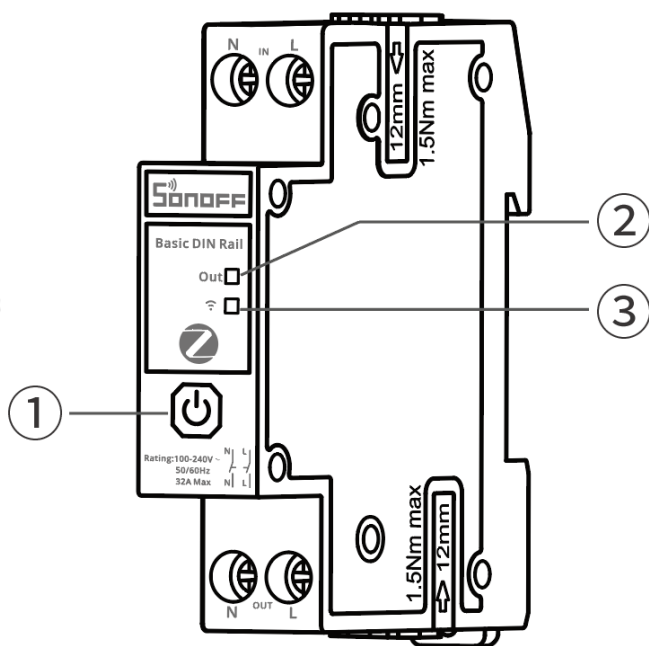
- Single press: Turn on/off the smart device.
- Press and hold for 5 seconds: Device enters the pairing mode.
- Press and hold for more than 10 seconds, then release: Factory reset.
- Short press in pairing mode: Exit pairing mode.

② On/Off indicator light (Red)

- Solid ON: Relay closed.
- Solid OFF: Relay open.
- Continuous rapid flashing in an endless loop: Device is locked due to overload protection.

③ Network indicator light (Blue)

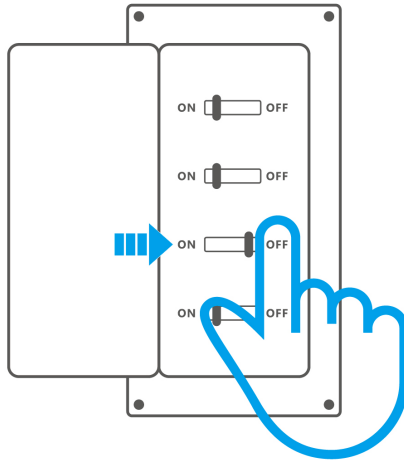
- Slow flashing: Pairing mode.
- Rapid flashing: Gateway connection abnormal.
- Solid ON: Connected to the gateway successfully.
- Solid OFF: Pairing failed/pairing timeout.
- ZB Identify: Active while the gateway sends a Zigbee Identify command.
- Continuous rapid flashing, then turns OFF after release: Factory reset triggered.



Platform Certification

Installation

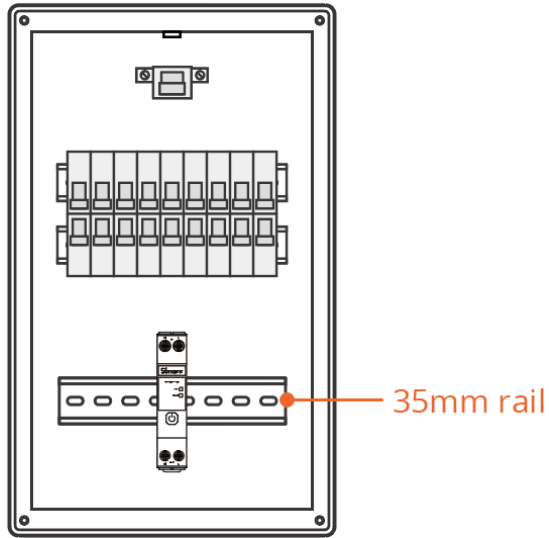
1. Power off



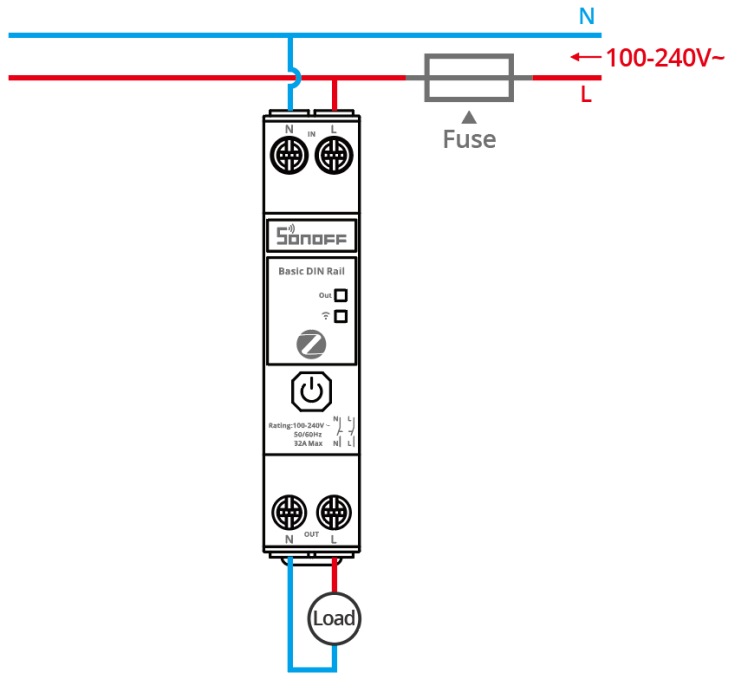
WARNING

- ① Please install and maintain the device by a professional electrician. To avoid electric shock hazards, do not operate any connection or contact the terminal connector while the device is powered on!
- ② To ensure electrical installation safety, a miniature circuit breaker (MCB) or residual current circuit breaker with overcurrent protection (RCBO) rated at 32A and compliant with national safety standards must be installed upstream of the BASIC-ZB1GSP.
- ③ For single-phase use only (100–240V~). Connecting to a multi-phase power supply may cause damage to the device.

2. Install the device inside the electrical distribution box



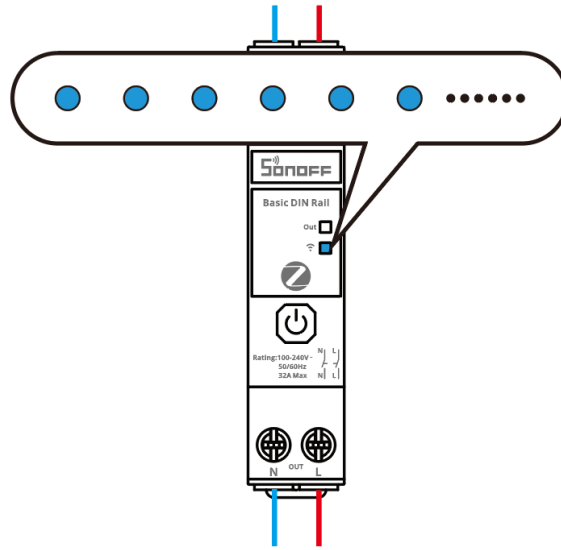
3. Wiring Instruction



- ⊕ Do not reverse the N and L terminals, as this may damage the device and cause danger.
- ⊕ Ensure all wiring connections are correct.

4. Power on

When the device is used for the first time, it will enter pairing mode by default after being powered on. At this time, the LED indicator will slowly flash.



ⓘ The device will exit the Pairing Mode if not paired within 3mins. If you want to enter this mode, please long-press the button for about 5s until the LED indicator slowly flashes.

Add Device

1. Download the eWeLink App

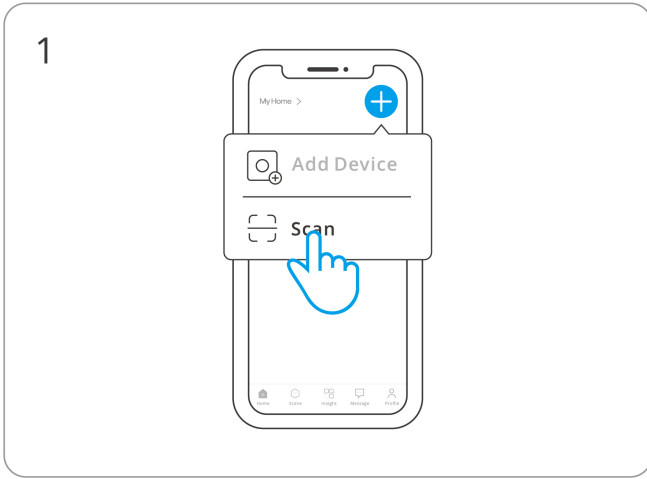
Please download the "eWeLink" App from [Google Play Store](#) or [Apple App Store](#).



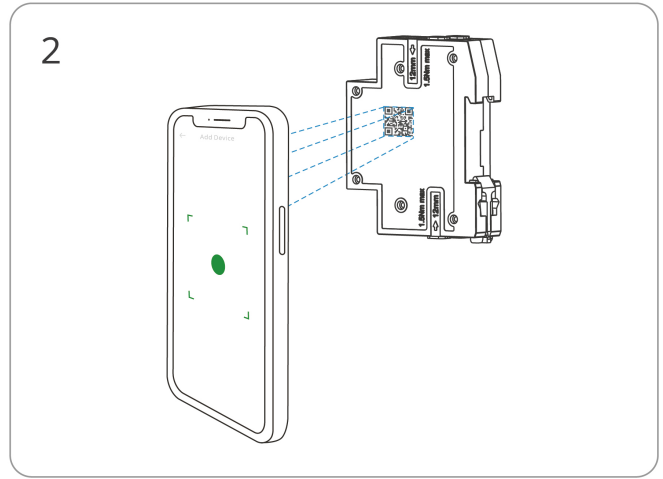
2. Add SONOFF Zigbee gateway

3. Add the device

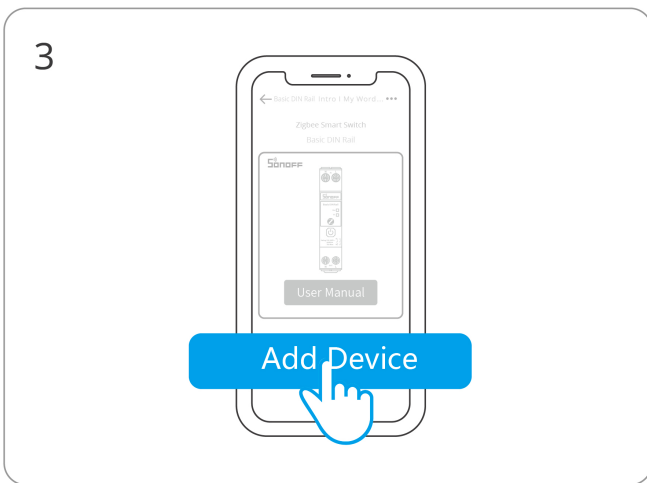
3.1. Method 1: Scan the QR Code



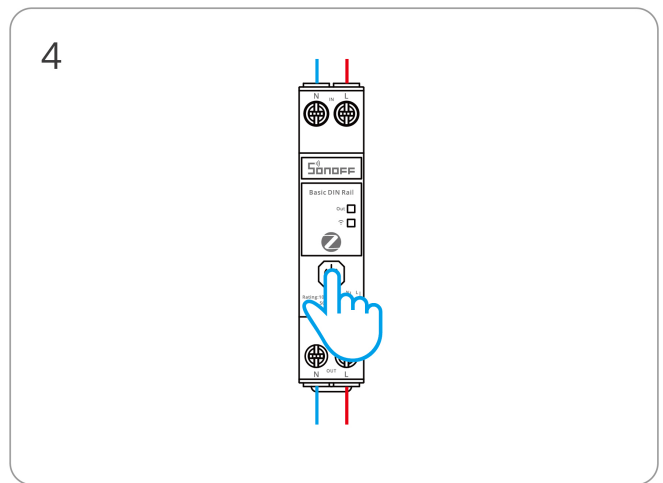
Enter "Scan".



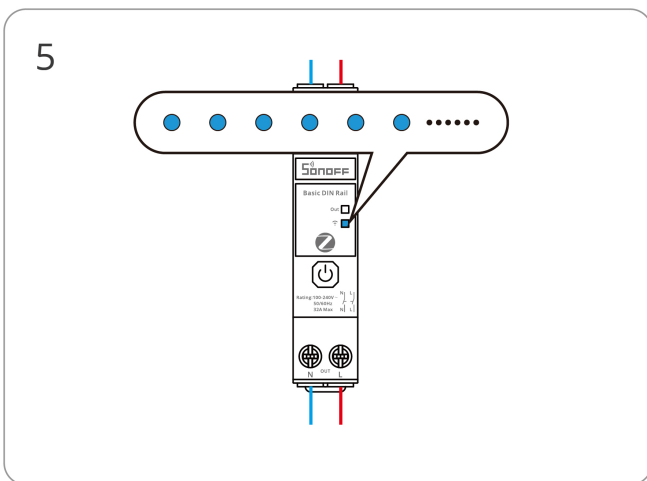
Scan the QR code on the device.



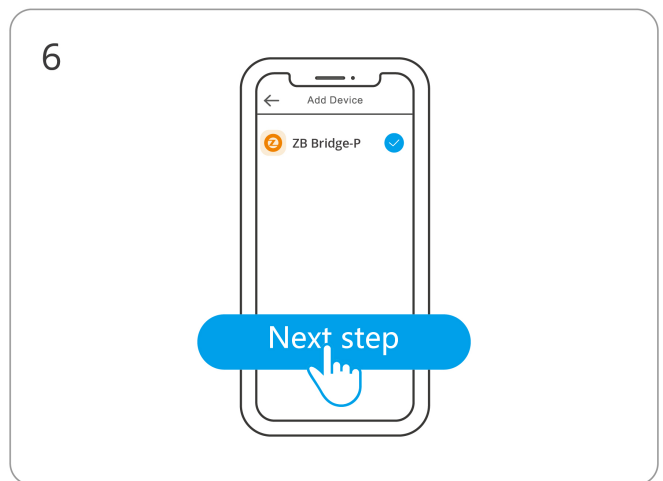
Select "Add Device".



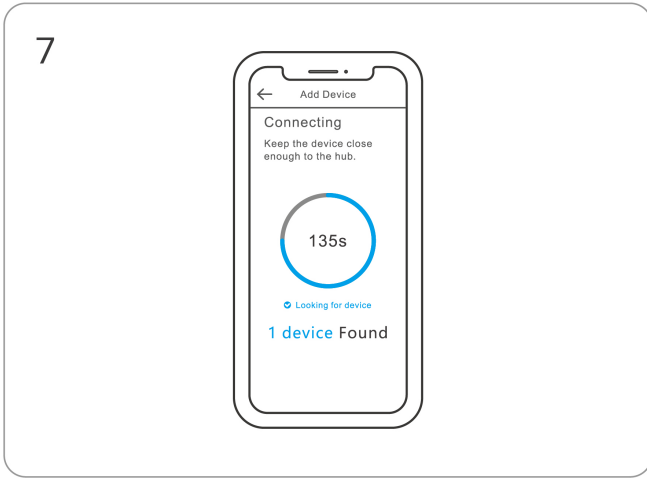
(If the device exits pairing mode)
Long press the button for 5 seconds.



Check the LED indicator flashing status (Slow flashing).

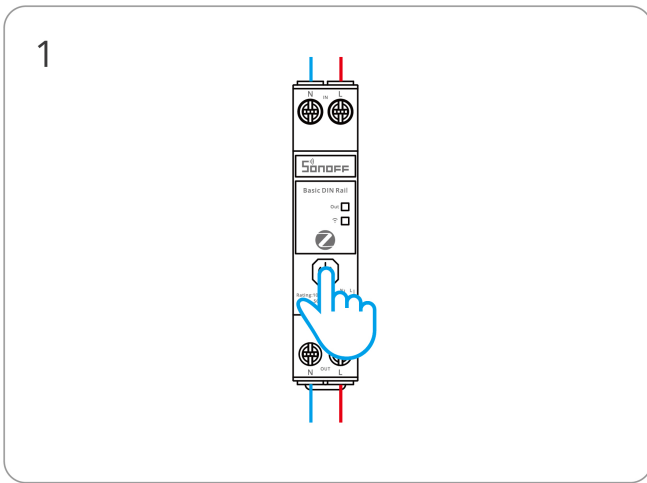


Select Zigbee gateway.

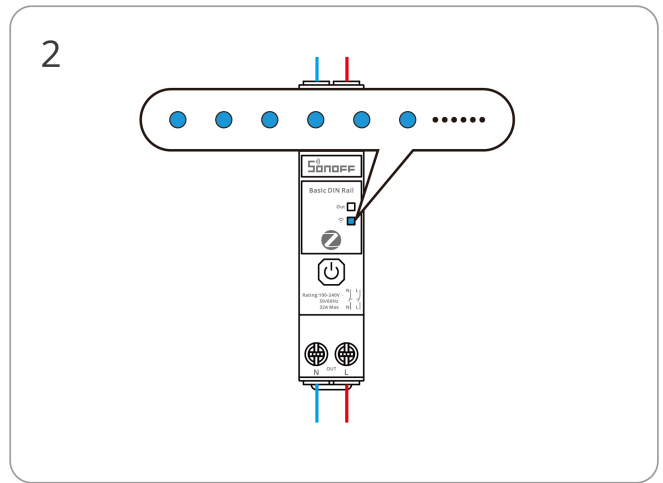


Wait until the addition is done.

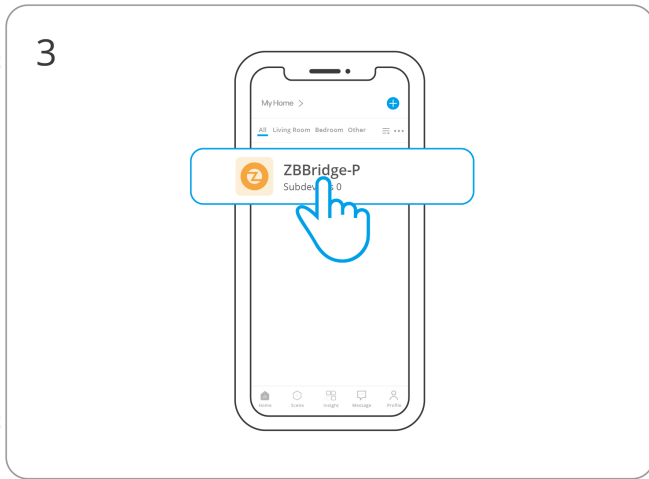
3.2. Method 2: Enable Gateway Pairing Mode



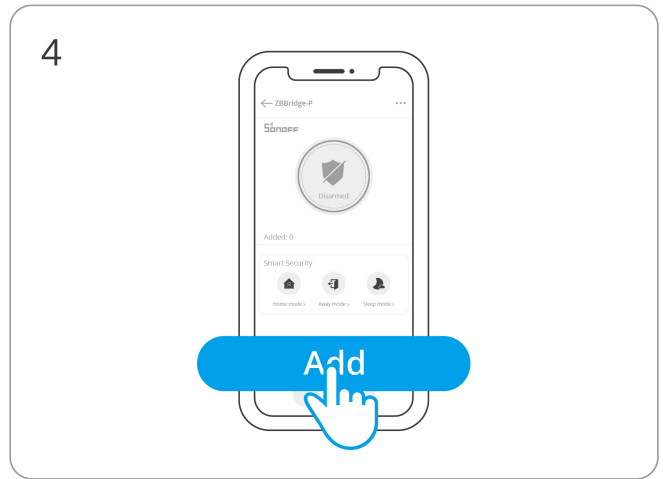
Long press the button for 5 seconds to confirm that the device has entered pairing mode.



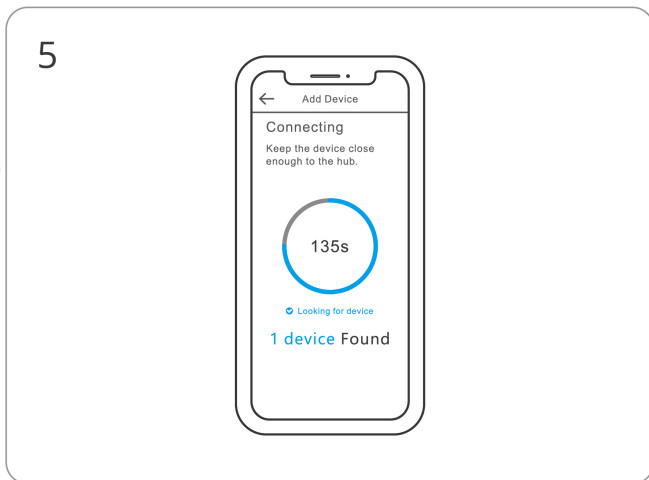
Check LED indicator flashing status (Slow flashing).



3
Select the gateway on the eWeLink App home page.



4
Find and tap “Add” on the gateway page.



5
The gateway enters pairing mode. Wait for the device pairing to complete.

Compatible SONOFF Gateways

Recommended SONOFF gateway models: ZBBridge-P, ZBBridge-U, NSPanel Pro, iHost.

Other compatible SONOFF gateway models: ZBDongle-P, ZBDongle-E.

Factory Reset

Trigger conditions (any one condition met)

- Delete the device on the App.
- The device that has been successfully paired can be paired again with another

eWeLink account to add it.

- Press and hold the device button for 10 seconds.
-

FCC compliance statement

Responsible Party Name: SONOFF TECHNOLOGY LLC

Address: 14777 NE 40th St, Suite 201 Bellevue, WA 98007

Email Address: usres@itead.cc FCC ID: 2APN5-BASICZB1GSP

1. This device complies with part 15 of the FCC Rules. Operation is subject to the following two conditions:

- (1) This device may not cause harmful interference, and
- (2) This device must accept any interference received, including interference that may cause undesired operation.

2. Changes or modifications not expressly approved by the party responsible for compliance could void the user's authority to operate the equipment.

Note: This equipment has been tested and found to comply with the limits for a Class B digital device, pursuant to part 15 of the FCC Rules. These limits are designed to provide reasonable protection against harmful interference in a residential installation. This equipment generates, uses and can radiate radio frequency energy and, if not installed and used in accordance with the instructions, may cause harmful interference to radio communications. However, there is no guarantee that interference will not occur in a particular installation. If this equipment does cause harmful interference to radio or television reception, which can be determined by turning the equipment off and on, the user is encouraged to try to correct the interference by one or more of the following measures:

- Reorient or relocate the receiving antenna.
- Increase the separation between the equipment and receiver.
- Connect the equipment into an outlet on a circuit different from that to which the receiver is connected.
- Consult the dealer or an experienced radio/TV technician for help.

FCC Radiation Exposure statement:

This equipment complies with FCC radiation exposure limits set forth for an uncontrolled environment.

This equipment should be installed and operated with a minimum distance of 20 cm between the radiator and your body.

This transmitter must not be co-located or operating in conjunction with any other antenna or transmitter.

EU Declaration of Conformity

Hereby, Shenzhen Sonoff Technologies Co., Ltd. declares that the radio equipment type BASIC-ZB1GSP is in compliance with Directive 2014/53/EU. The full text of the EU declaration of conformity is available at the following internet address:

<https://sonoff.tech/compliance/>

For CE Frequency

EU Operating Frequency Range:

Zigbee: 2405—2480 MHz

EU Output Power:

Zigbee \leq 10dBm

Under normal use of condition, this equipment should be kept a separation distance of at least 20 cm between the antenna and the body of the user.

WEEE Disposal and Recycling Information



WEEE Disposal and Recycling Information All products bearing this symbol are waste electrical and electronic equipment (WEEE as in directive 2012/19/EU) which should not be mixed with unsorted household waste. Instead, you should protect human health and the environment by handing over your waste equipment to a designated collection point for the recycling of waste electrical and electronic equipment, appointed by the government or local authorities. Correct disposal and recycling will help prevent potential negative consequences to the environment and human health. Please contact the installer or local authorities for more information about the location as well as terms and conditions of such collection points.

Scatola	Manuale
PAP 21	PAP 22
Carta	Carta
RACCOLTA DIFFERENZIATA	
Verifica le disposizioni del tuo Comune.	
Separa le componenti e conferiscile in modo corretto.	



Manufacturer: Shenzhen Sonoff Technologies Co., Ltd.

Address: 3F & 6F, Bldg A, No. 663, Bulong Rd, Shenzhen, Guangdong, 518000, China

Service email: support@itead.cc Website: sonoff.tech

Made in China



FR

Cet appareil se recycle

À DÉPOSER EN MAGASIN

À DÉPOSER EN DÉCHÈTERIE



OU



Points de collecte sur www.quefairedemesdechets.fr
Privilégiez la réparation ou le don de votre appareil !

ITE

NO - 黎业军(2602432)

