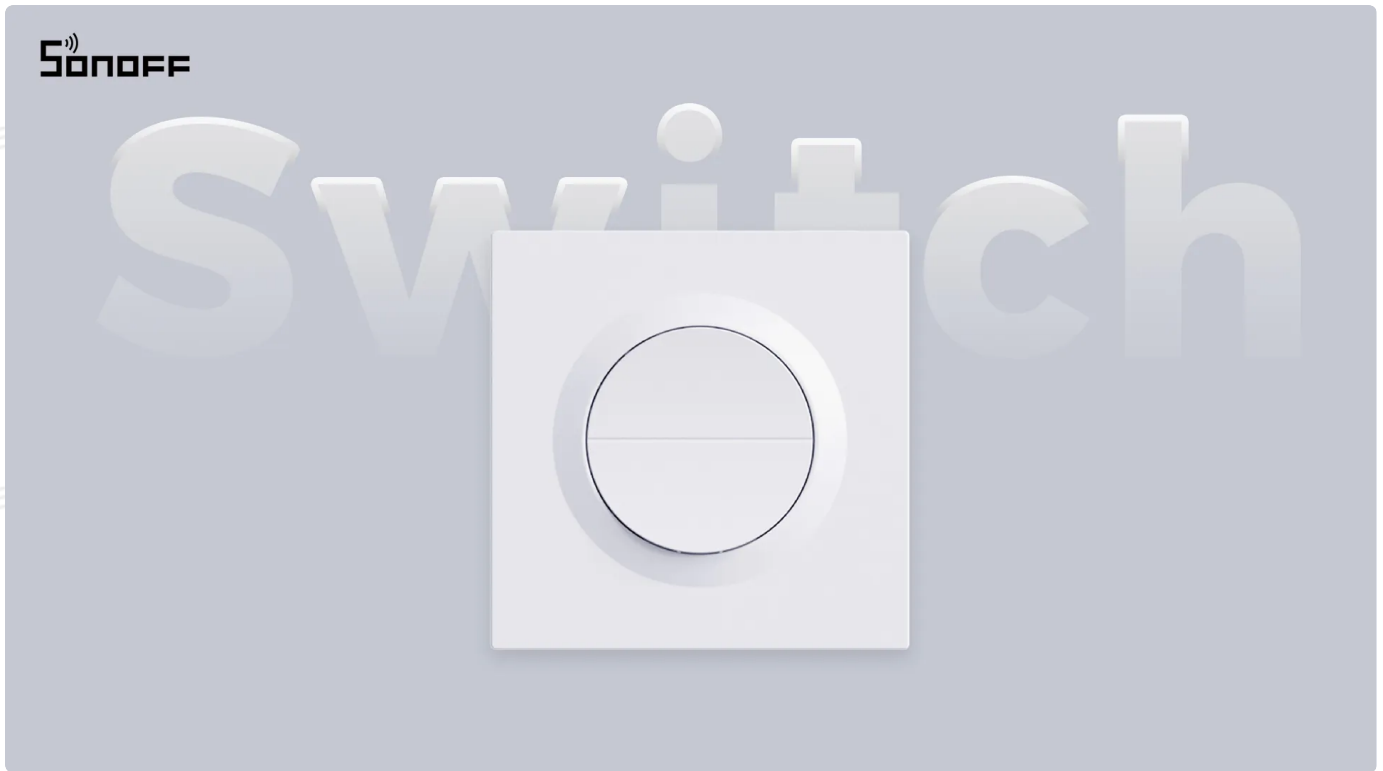


User Manual MINI-2GS-E (EN)



Matter Over WiFi Double Smart Wall Switch

User Manual V1.0

Introduction

Orb-MW2 is a dual-channel smart wall switch based on 2.4GHz Wi-Fi. It requires a neutral wire for operation and supports a maximum load of 16A (total), meeting the control needs of various household devices. It is also compatible with the Matter platform, enabling seamless integration with multiple smart home systems.



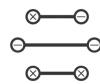
Remote Control



Voice Control



Smart Schedule



Power-on State



Matter Compatibility



Smart Scene



Share Device



Group Control

① Switch Button

- Short press once: Turns the connected load on or off.
- Short press the same key 10+ times consecutively (with intervals <1 second): The device enters pairing mode.

② Device Button

- Press and hold for 5 seconds: Device enters the pairing mode. (Pairing time 10 minutes)

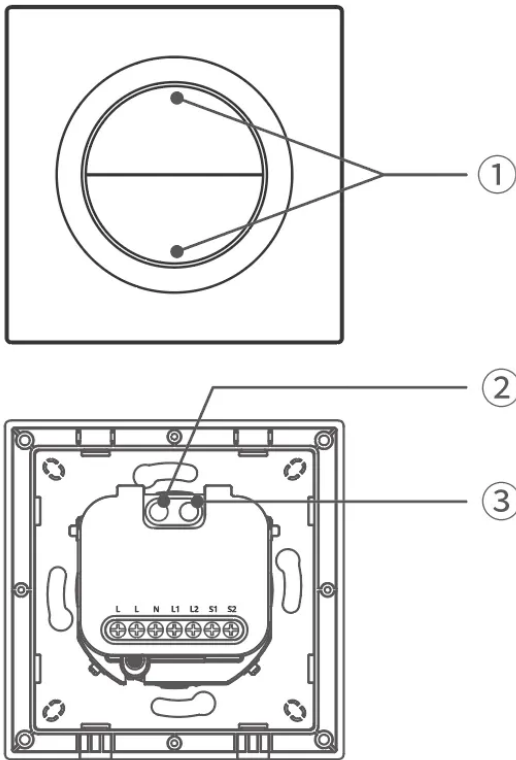
③ LED indicator (Blue)

eWeLink Mode

- Flashes two short and one long: Device is in pairing mode.
- Keeps on: Device is online.
- Flashes once: Offline
- Flashes twice: Device is connected to the router but not to the cloud.

Matter Mode

- Flashes two short and one long: Device is in pairing mode.
- Keeps on: Device is online.
- Flashes once: Offline



Platform Certification

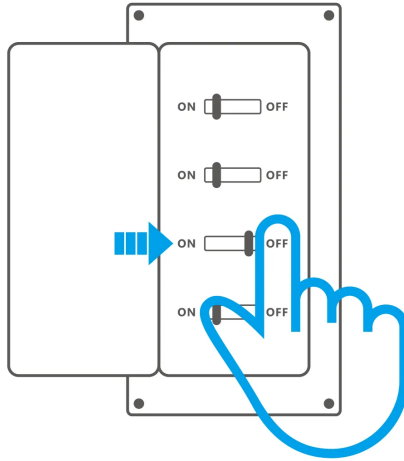


Specification

Product name	Orb-MW2
Product series	Fusion series
Product type	Matter Over WiFi Double Smart Wall Switch
Model	MINI-2GS-E
MCU	ESP32-C3FH4X
Rating	110-240V~ 50/60Hz 10A/gang, Total 16A MAX Resistive load
Wi-Fi	IEEE 802.11b/g/n 2.4GHz
Net weight	96.5g
Product dimension	86x86x33.7mm
Color	White
Casing material	PC
Diameter of wiring (recommend)	16AWG to 14AWG SOL/STR copper conductor only
Applicable place	Indoor
Working temperature	10T40 (-10°C~40°C)
Working humidity	5-95%RH, non-condensing
Certification	CE/RoHS

Installation

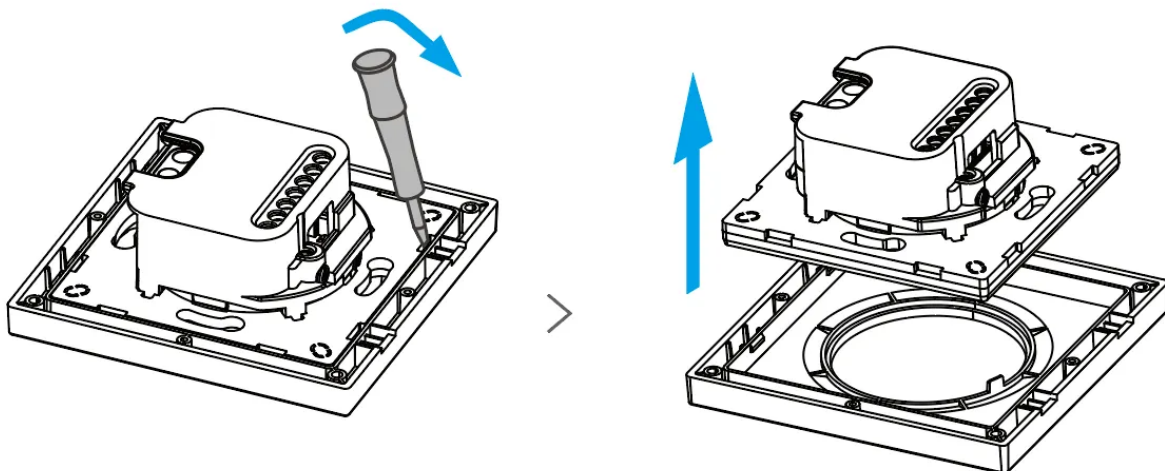
1. Power off



WARNING

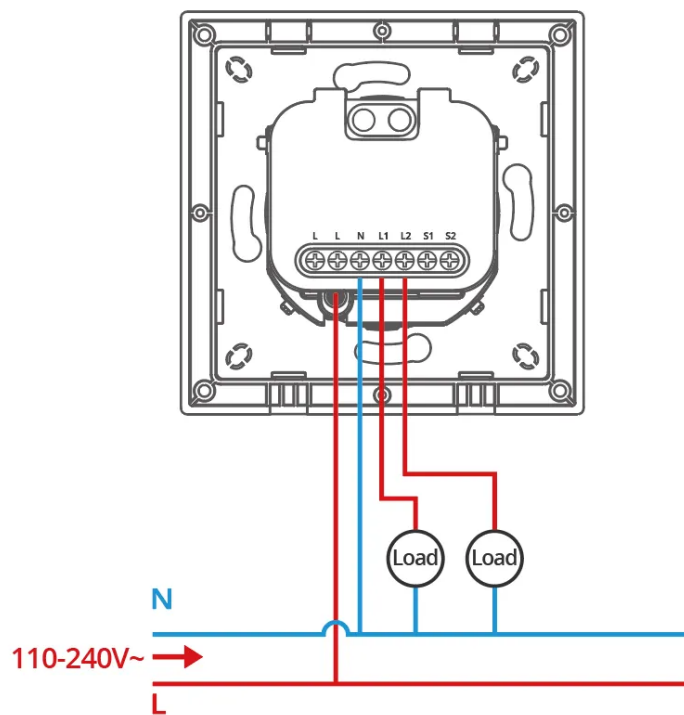
- ① Please install and maintain the device by a professional electrician. To avoid electric shock hazards, do not operate any connection or contact the terminal connector while the device is powered on!
- ② To ensure the safety of your electrical installation, it's essential that either a Miniature Circuit Breaker (MCB) or a Residual Current operated Circuit-breaker with Integral Overcurrent protection (RCBO) with an electrical rating of 16A has been installed before the MINI-2GS-E.

2. Pry off the switch cover



3. Wiring instruction

⚠ Make sure all wires are connected correctly.

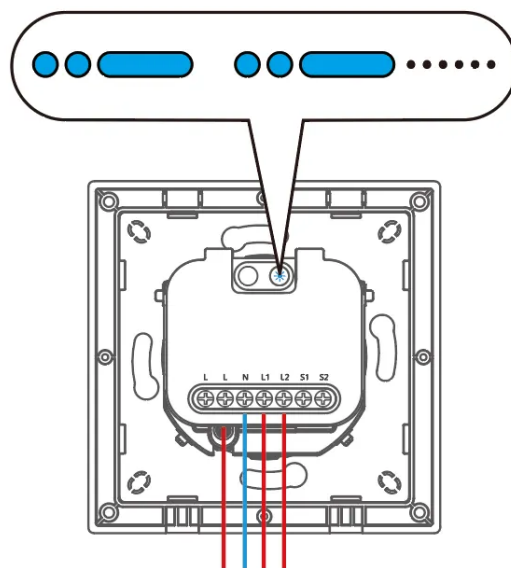


Instructions for wiring symbols

Terminals		Wires	
L	Live Terminal	L	Live Line (110–240V~)
N	Neutral Terminal	N	Neutral Line
L1	Live Output Terminal_1 (110–240V~)		
L2	Live Output Terminal_2 (110–240V~)		
S1	Switch_1		
S2	Switch_2		

4. Power on

When the device is used for the first time, it will enter pairing mode by default after being powered on. At this time, the LED indicator will flash in a pattern of "two short and one long".



⚠ The device will exit the Pairing Mode if not paired within 10mins. If you want to enter this mode, please long-press the device button for about 5s until the LED indicator changes in a cycle of two short and one long flash and release.

Open a Matter-compatible App to scan the Matter QR code on the Quick Guide or the device itself to add the device.



Add to Apple via
Matter



Add to Google via
Matter



Add to Alexa via
Matter

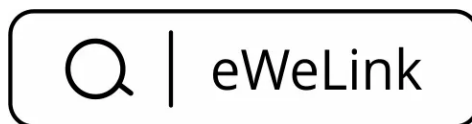


Add to SmartThings
via Matter

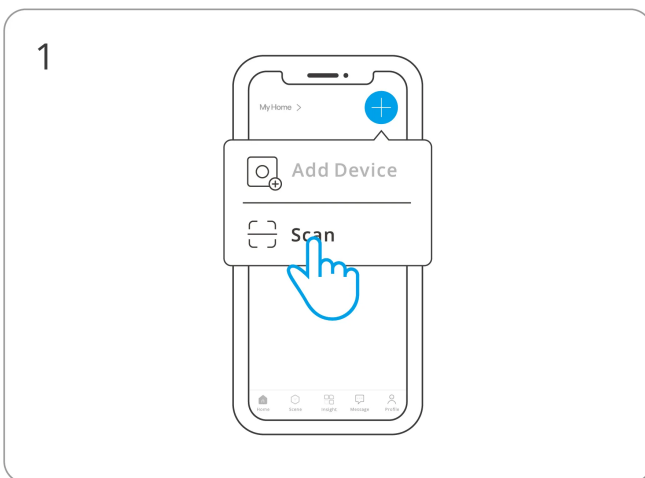
eWeLink Ecosystem User Guide

1. Download the eWeLink App

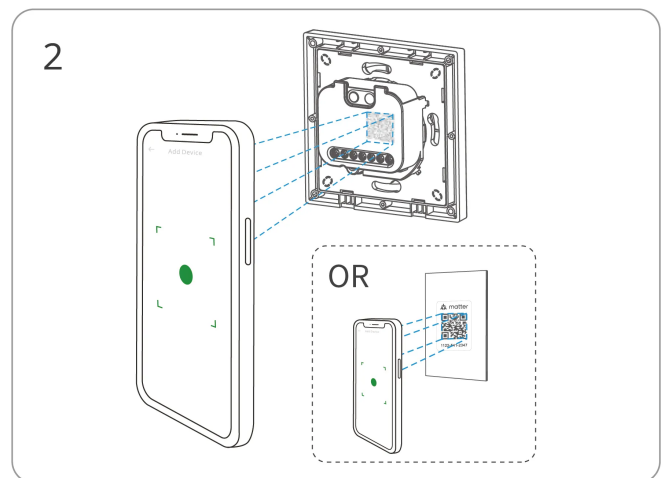
Please download the "eWeLink" App from **Google Play Store** or **Apple App Store**.



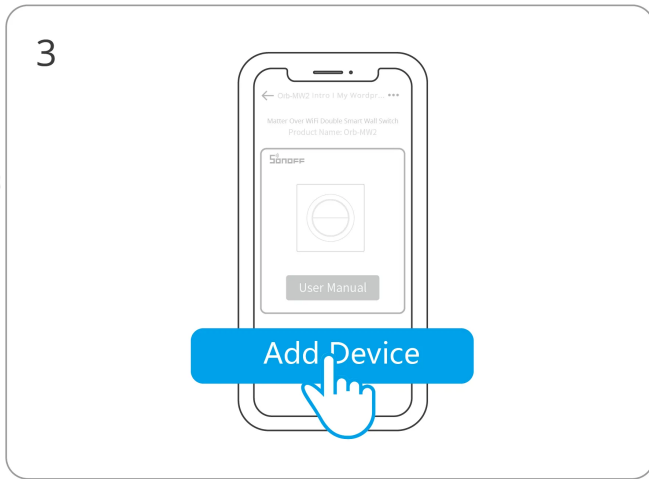
2. Add Device



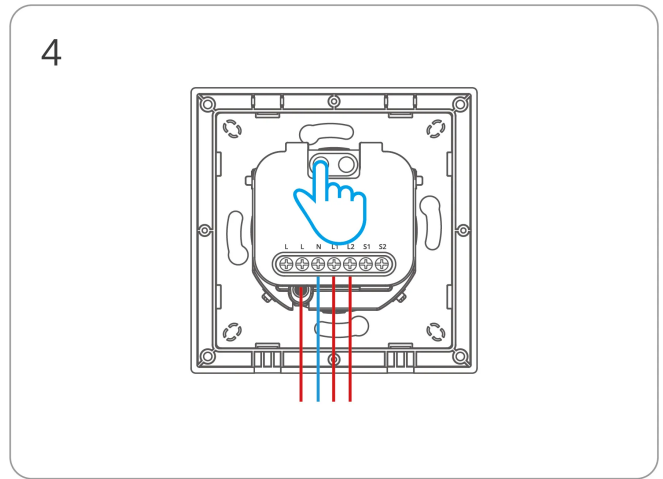
Enter "Scan"



Scan the QR code on the quick guide or the
device

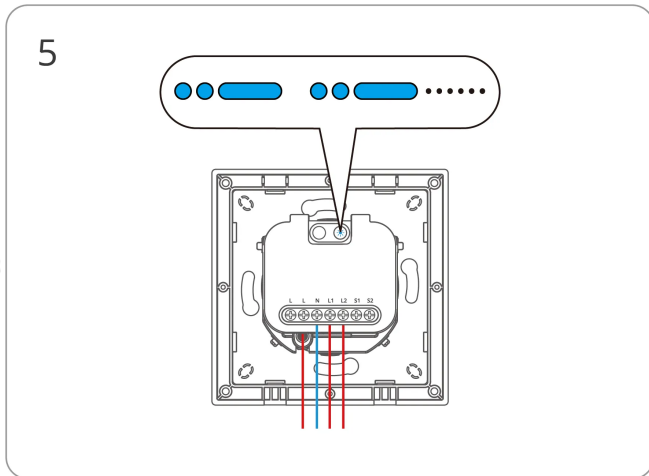


Select "Add Device"

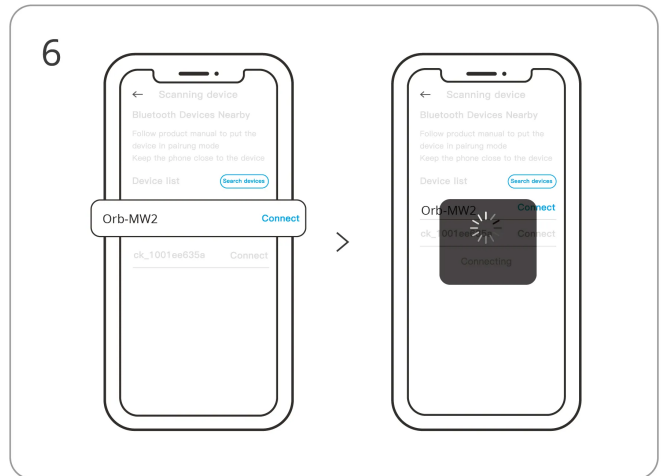


(If the device exits pairing mode)

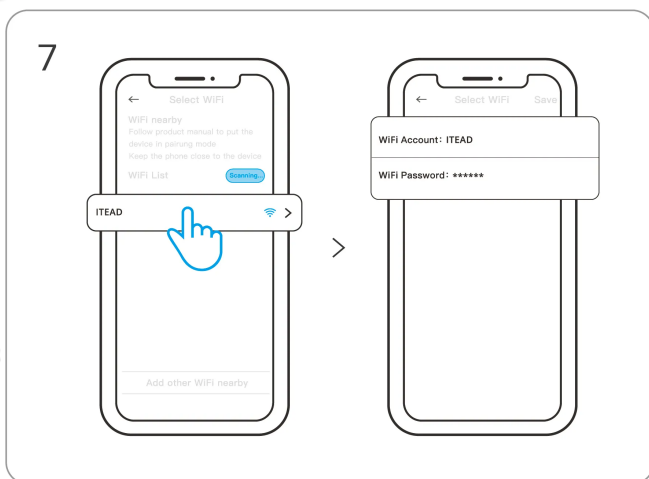
Long press the device button for 5 seconds



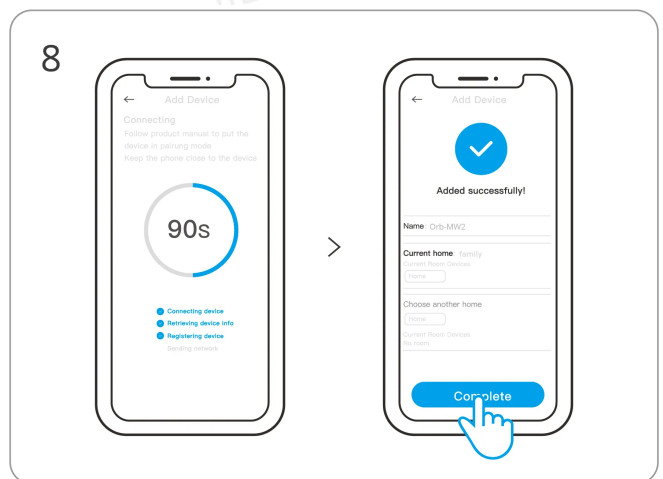
Check LED indicator flashing status
(Two short and one long)



Search for the device and start connecting

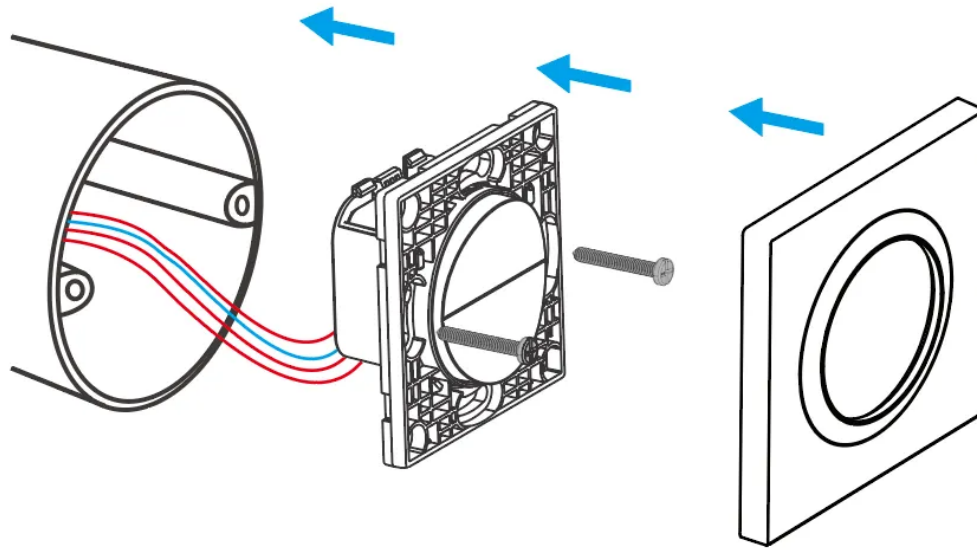


Select the "Wi-Fi" network and enter the password



Device "Added completely"

Installation



Factory Reset

Trigger conditions (any one condition met)

- Delete the device from the eWeLink App.
- Press and hold the device button for 10 seconds.

EU Declaration of Conformity

Hereby, Shenzhen Sonoff Technologies Co., Ltd. declares that the radio equipment type MINI-2GS-E is in compliance with Directive 2014/53/EU. The full text of the EU declaration of conformity is available at the following internet address:

<https://sonoff.tech/compliance/>

For CE Frequency

EU Operating Frequency Range:

Wi-Fi: 802.11 b/g/n20 2412–2472 MHz, 802.11 n40: 2422–2462 MHz

BLE: 2402–2480 MHz

EU Output Power:

Wi-Fi 2.4G≤20dBm

BLE≤20dBm

Under normal use of condition, this equipment should be kept at a separation distance of at least 20 cm between the antenna and the body of the user.

WEEE Disposal and Recycling Information



WEEE Disposal and Recycling Information All products bearing this symbol are waste electrical and electronic equipment (WEEE as in directive 2012/19/EU) which should not be mixed with unsorted household waste. Instead, you should protect human health and the environment by handing over your waste equipment to a designated collection point for the recycling of waste electrical and electronic equipment, appointed by the government or local authorities. Correct disposal and recycling will help prevent potential negative consequences to the environment and human health. Please contact the installer or local authorities for more information about the location as well as terms and conditions of such collection points.

Scatola	Manuale	Borsa	Borsa
PAP 21	PAP 22	CPE 7	LDPE 4
Carta	Carta	Plastica	Plastica
RACCOLTA DIFFERENZIATA			
Verifica le disposizioni del tuo Comune.			
Separa le componenti e conferiscile in modo corretto.			



Manufacturer: Shenzhen Sonoff Technologies Co., Ltd.

Address: 3F & 6F, Bldg A, No. 663, Bulong Rd, Shenzhen, Guangdong, 518000, China

Service email: support@itead.cc

Website: sonoff.tech

Made in China



FR

**Cet appareil et
ses accessoires
se recyclent**

À DÉPOSER
EN MAGASIN



OU

À DÉPOSER
EN DÉCHÈTERIE



Points de collecte sur www.quefairedemesdechets.fr
Privilégiez la réparation ou le don de votre appareil !

