

User Manual MINI-DIM-E (EN)



Matter Over WiFi Dimmer Wall Switch

User Manual V1.0

Introduction

Orb-DIM is a Matter over Wi-Fi smart wall-mounted dimmer switch designed to easily upgrade traditional lighting systems. It is fully compatible with dimmable LED bulbs, incandescent lights, halogen lamps, and dimmable electronic transformers. With its native support for the Matter ecosystem, it enables seamless cross-brand dimming control. Built-in features such as overheating protection, power detection, and automatic calibration ensure a convenient and worry-free smart home experience.



Remote Control



Support Matter



Smart Scene



Smart Timer



Calibration



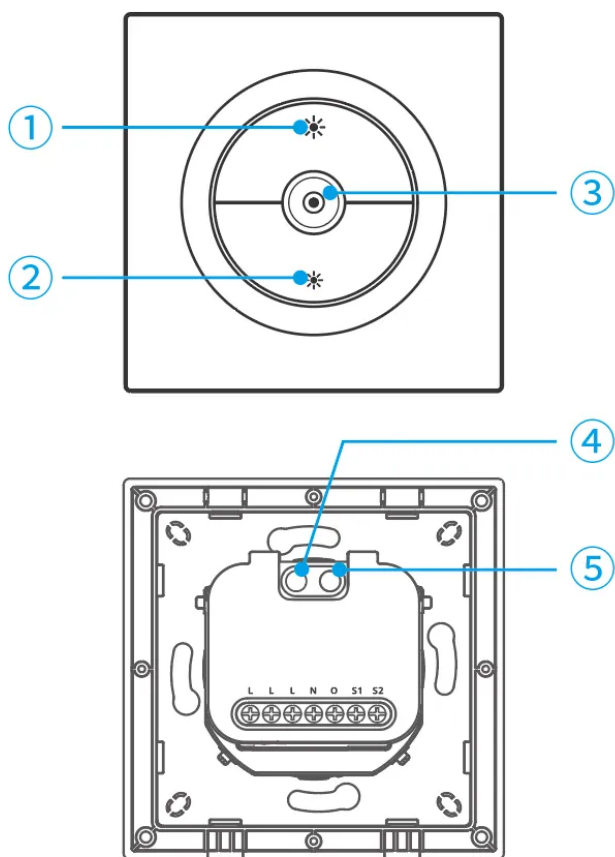
Over-Temperature
Protection



Power Detection



Voice Control



① Brightness Increase Button

- Short or long press: Increase the brightness of the light

② Brightness Decrease Button

- Short or long press: Decrease the brightness of the light

③ Light On/Off Button

- Short press: Turn the light on or off

④ Device Button

- Short press: Turn the light on or off
- Press and hold for 5 seconds: Device enters network pairing mode (pairing duration: 10 minutes)
- Press and hold for 10 seconds: Automatic dimming calibration
- Press and hold for 15 seconds: Restore factory settings

⑤ LED Indicator (Blue)

eWeLink Mode

- Flashes two short and one long: Device is in pairing mode
- Keeps on: Online
- Repeated single flash: Offline
- Flashes twice: Device is connected to the router but not to the cloud

Matter Mode

- Flashes two short and one long: Device is in pairing mode
- Keeps on: Online
- Repeated single flash: Offline

Platform Certification

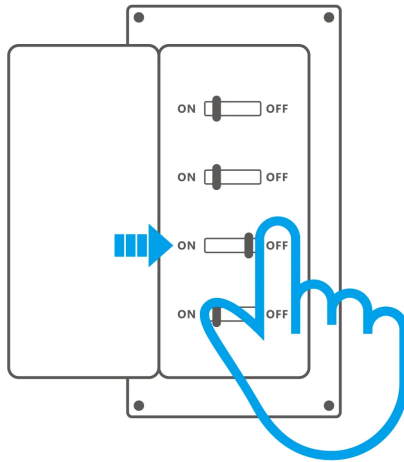


Specification

Product name	Orb-DIM
Product series	Fusion Series
Product type	Matter Over WiFi Dimmer Wall Switch
Model	MINI-DIM-E
MCU	ESP32-C3
Rating	220-240V~ 50Hz 400W Max Resistive load ⚡ ε
LED	200VA
Wi-Fi	IEEE 802.11b/g/n 2.4GHz
Net weight	83g
Product dimension	86x86x33.7mm
Color	White
Casing material	PC
Diameter of wiring (recommend)	0.75mm ² to 1.5mm ² / 18AWG to 16AWG SOL/STR copper conductor only
Applicable place	Indoor
Working temperature	10T40 (-10°C~40°C)
Working humidity	5-95%RH, non-condensing
Certification	CE/RoHS

Installation

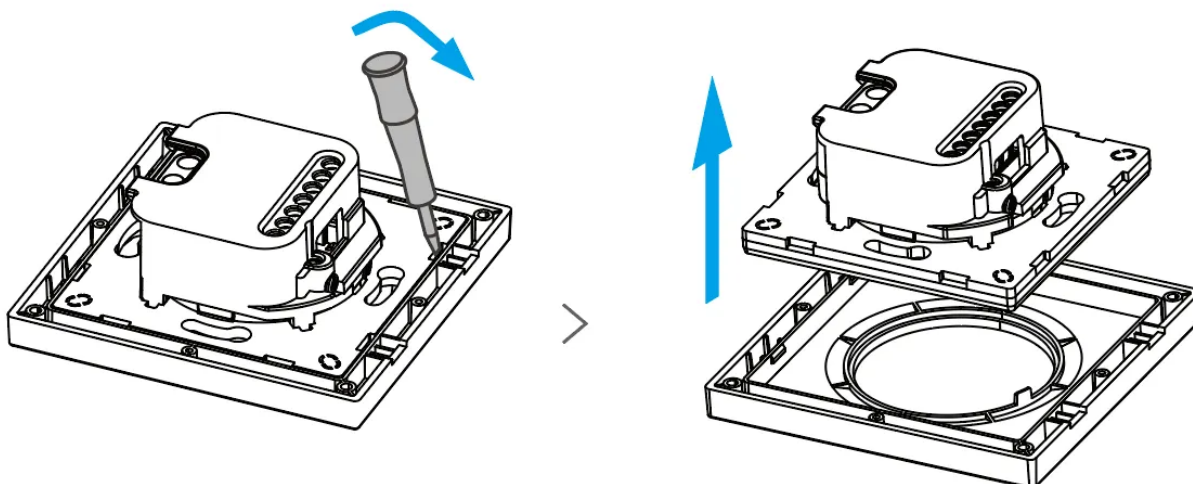
1. Power off



WARNING

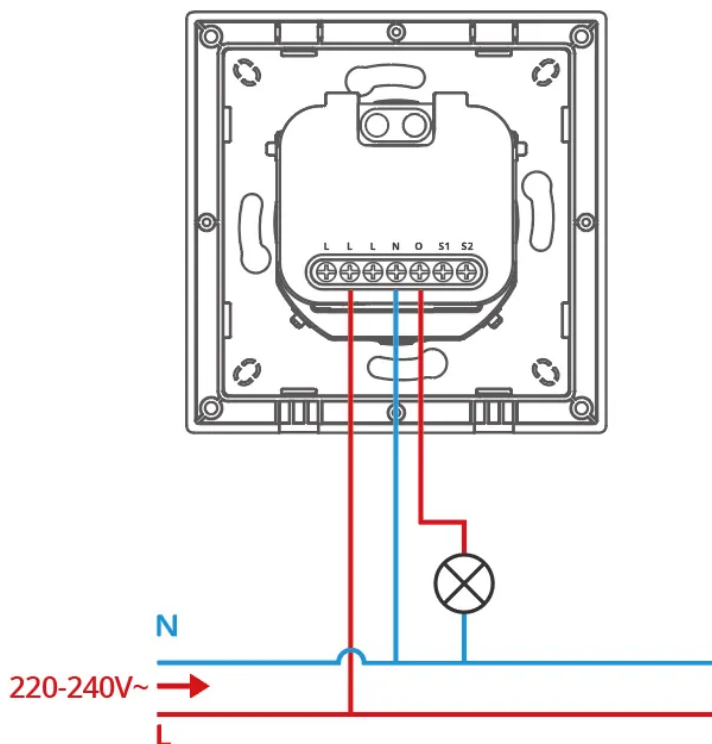
- ① Please install and maintain the device by a professional electrician. To avoid electric shock hazards, do not operate any connection or contact the terminal connector while the device is powered on!
- ② To ensure the safety of your electrical installation, it's essential that either a Miniature Circuit Breaker (MCB) or a Residual Current operated Circuit-breaker with Integral Overcurrent protection (RCBO) with an electrical rating of 2A has been installed before the MINI-DIM-E.

2. Pry off the switch cover



3. Wiring instruction

⚠ Make sure all wires are connected correctly.



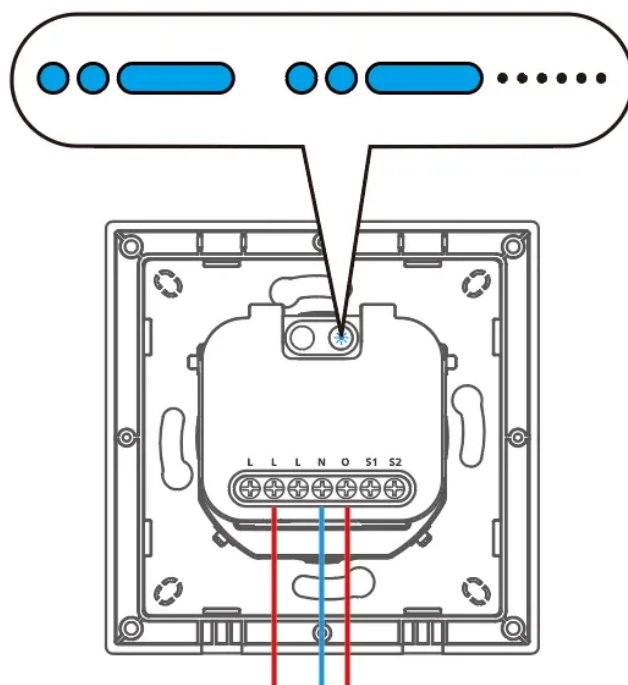
Instructions for wiring symbols

Terminals	Wires
-----------	-------

L	Live Terminal	L	Live Line (220–240V~)
N	Neutral Terminal	N	Neutral Line
O	Live Output Terminal (220–240V~)		
S1	Switch_1		
S2	Switch_2		

4. Power on

When the device is used for the first time, it will enter pairing mode by default after being powered on. At this time, the LED indicator will flash in a pattern of "two short and one long".



⚠ The device will exit the Pairing Mode if not paired within 10mins. If you want to enter this mode, please long-press the button for about 5s until the LED indicator changes in a cycle of two short and one long flash and release.

Matter Ecosystem User Guide

Open a Matter-compatible App to scan the Matter QR code on the Quick Guide or the device itself to add the device.



Add to Apple via
Matter



Add to Google
via Matter



Add to Alexa via
Matter

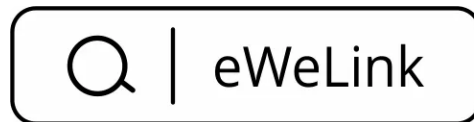


Add to
SmartThings via
Matter

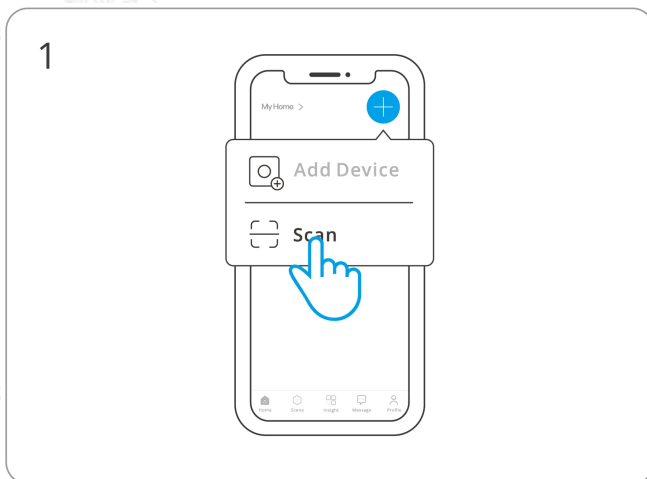
eWeLink Ecosystem User Guide

① Download the eWeLink App

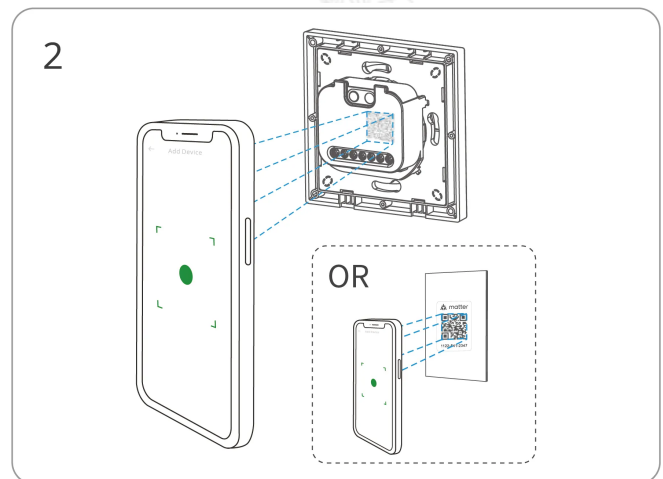
Please download the "eWeLink" App from **Google Play Store** or **Apple App Store**.



② Add Device

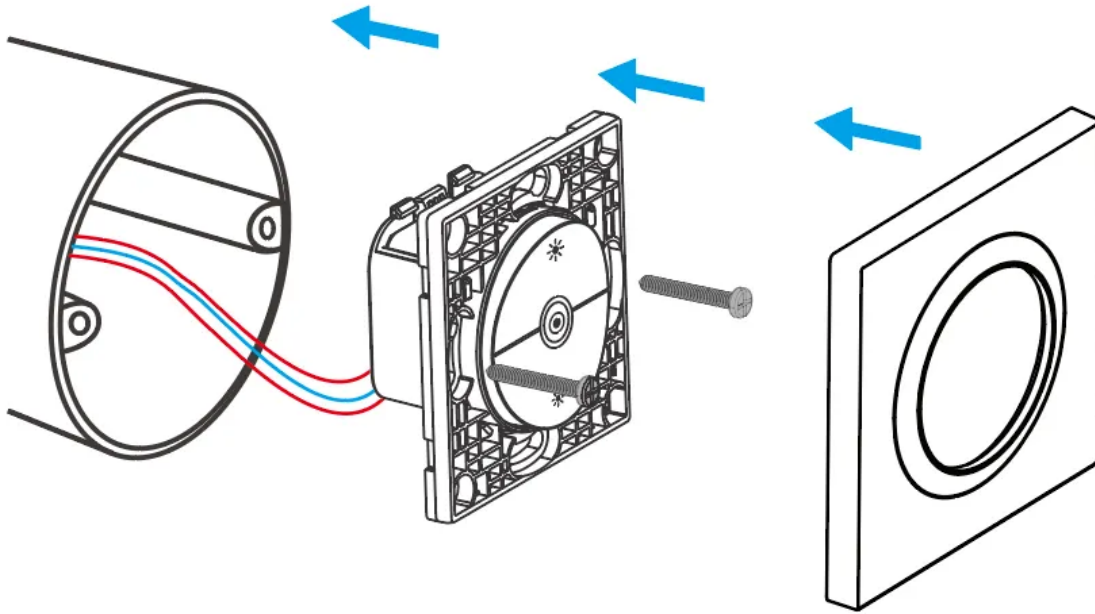


Enter "Scan"



Scan the QR code on the quick guide or the
device

Installation



Factory Reset

Trigger conditions (any one condition met)

- Delete the device on eWeLink App.
- The device that has been successfully paired can be paired again with another eWeLink account to add it.
- Press and hold the device button for 15 seconds.

EU Declaration of Conformity

Hereby, Shenzhen Sonoff Technologies Co., Ltd. declares that the radio equipment type MINI-DIM-E is in compliance with Directive 2014/53/EU. The full text of the EU declaration of conformity is available at the following internet address:

<https://sonoff.tech/compliance/>

For CE Frequency

EU Operating Frequency Range:

Wi-Fi: 802.11 b/g/n20 2412–2472 MHz, 802.11 n40: 2422–2462 MHz

BLE: 2402–2480 MHz

EU Output Power:

Wi-Fi 2.4G \leq 20dBm

BLE \leq 20dBm

Under normal use of condition, this equipment should be kept at a separation distance of at least 20 cm between the antenna and the body of the user.

WEEE Disposal and Recycling Information



WEEE Disposal and Recycling Information All products bearing this symbol are waste electrical and electronic equipment (WEEE as in directive 2012/19/EU) which should not be mixed with unsorted household waste. Instead, you should protect human health and the environment by handing over your waste equipment to a designated collection point for the recycling of waste electrical and electronic equipment, appointed by the government or local authorities. Correct disposal and recycling will help prevent potential negative consequences to the environment and human health. Please contact the installer or local authorities for more information about the location as well as terms and conditions of such collection points.

Scatola	Manuale	Borsa	Borsa
PAP 21	PAP 22	CPE 7	LDPE 4
Carta	Carta	Plastica	Plastica
RACCOLTA DIFFERENZIATA			
Verifica le disposizioni del tuo Comune.			
Separa le componenti e conferiscile in modo corretto.			



Manufacturer: Shenzhen Sonoff Technologies Co., Ltd.

Address: 3F & 6F, Bldg A, No. 663, Bulong Rd, Shenzhen, Guangdong, 518000, China

Service email: support@itead.cc

Website: sonoff.tech

Made in China



Points de collecte sur www.quefairedemesdechets.fr
Privilégiez la réparation ou le don de votre appareil !

