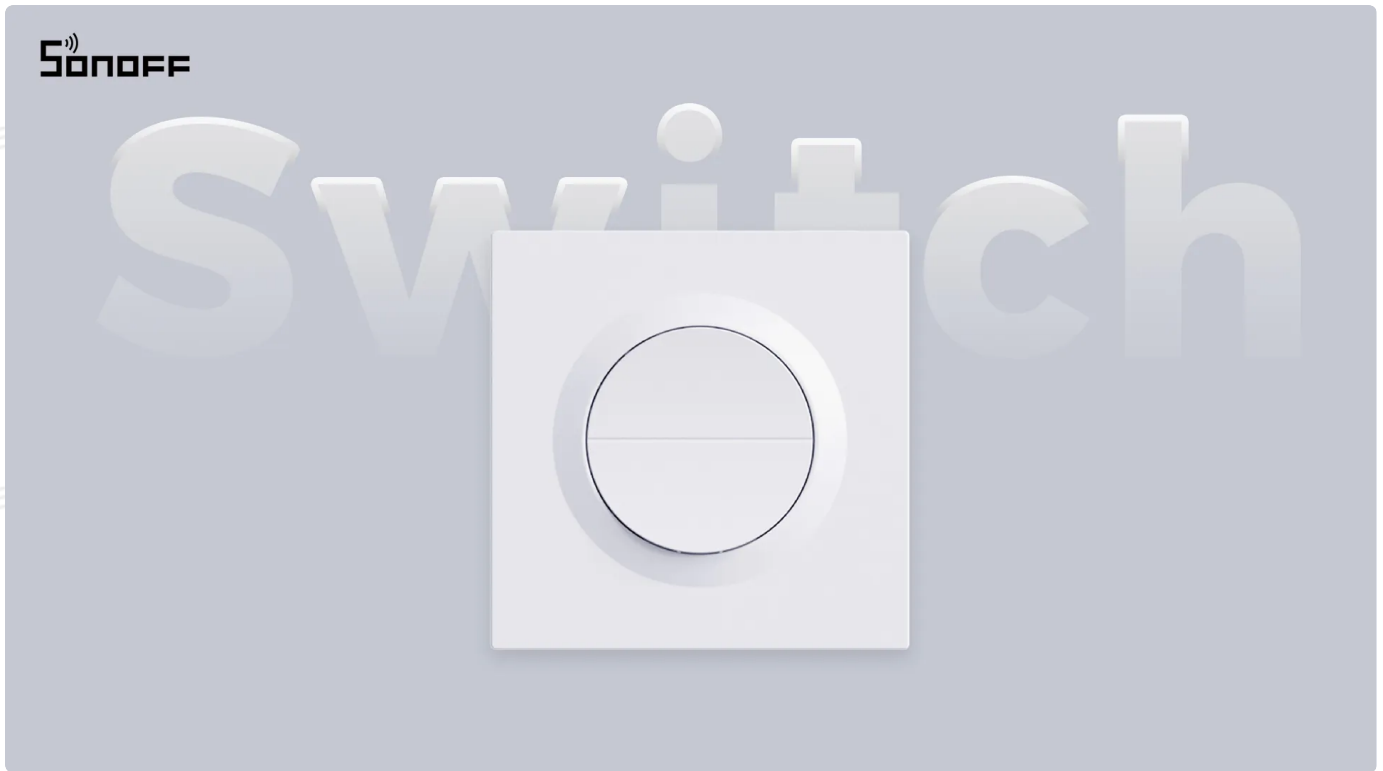


User Manual MINI-ZB2GS-L-E (EN)



Zigbee Double Smart Wall Switch (No Neutral Required)

User Manual V1.0

Introduction

The Orb-ZBW2L is a dual-channel smart wall switch based on Zigbee 3.0 technology and requires no neutral wire. Each channel supports up to 8A, with a maximum total load of 12A when both channels operate simultaneously. Additionally, it supports scheduled control and can interact with other SONOFF devices in smart scenarios, further enhancing your home automation experience.



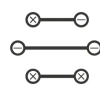
Remote Control



Timer Schedule



Smart Scene



Power-on State



Dual Load Control



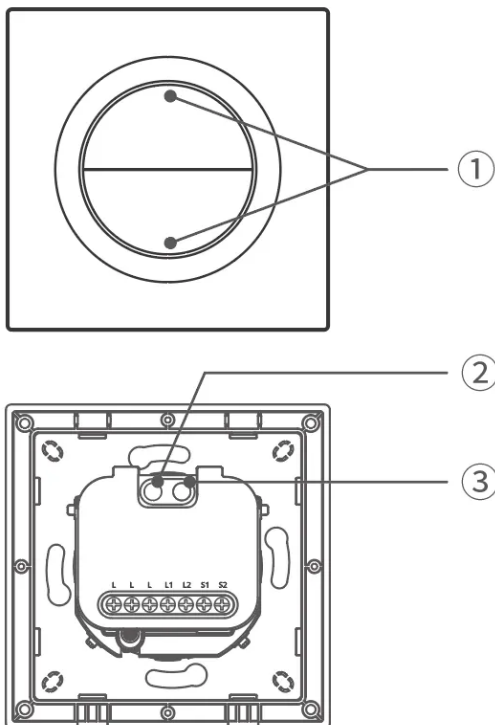
Voice Control



Share Device



Group Control



① Switch Button

- Short press once: Turns the connected load on or off.
- Short press the same key 10+ times consecutively (with intervals <1 second): The device enters pairing mode.

② Device Button

- Press and hold for 5 seconds: Device enters the pairing mode. (Pairing time 3 minutes)

③ LED indicator (Green)

- Slow flash: Device is in pairing mode.
- Keeps off: Normal connection with the gateway.
- Fast flash: Abnormal connection with the gateway, Pairing failure/Timeout.
- Flashes five times quickly: Trigger Factory Reset

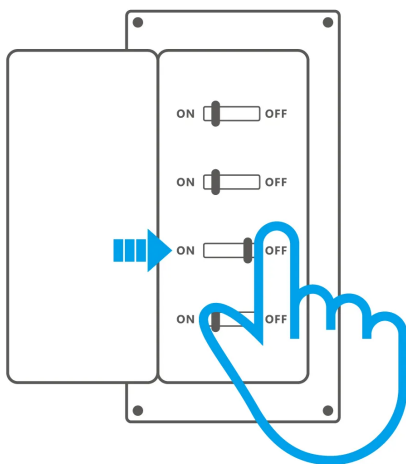
Specification

Product name	Orb-ZBW2L
Product series	Fusion series
Product type	Zigbee Double Smart Wall Switch (No Neutral Required)
Model	MINI-ZB2GS-L-E

MCU	EFR32MG22
Rating	100–240V~ 50/60Hz 8A/gang, Total 12A MAX Resistive load
LED	300W@240V/gang, 150W@100V/gang, Total 600W@240V, 300W@100V
Min. load	3W (No Neutral Required)
Zigbee	IEEE 802.15.4
Net weight	96.5g
Product dimension	86x86x33.7mm
Color	White
Casing material	PC
Diameter of wiring (recommend)	16AWG to 14AWG SOL/STR copper conductor only
Applicable place	Indoor
Working temperature	10T40 (–10°C~40°C)
Working humidity	5–95%RH, non–condensing
Certification	CE/RoHS

Installation

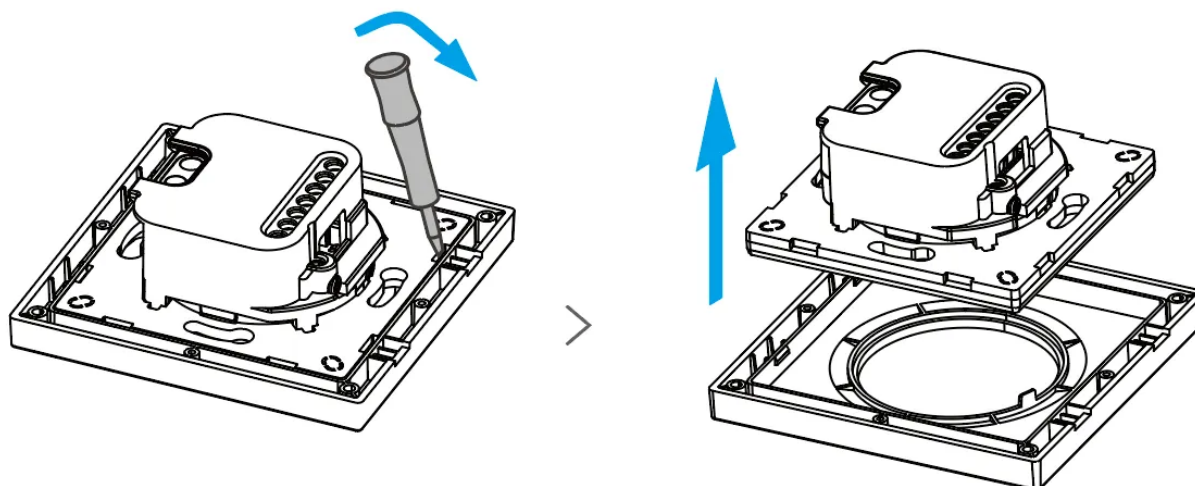
1. Power off



WARNING

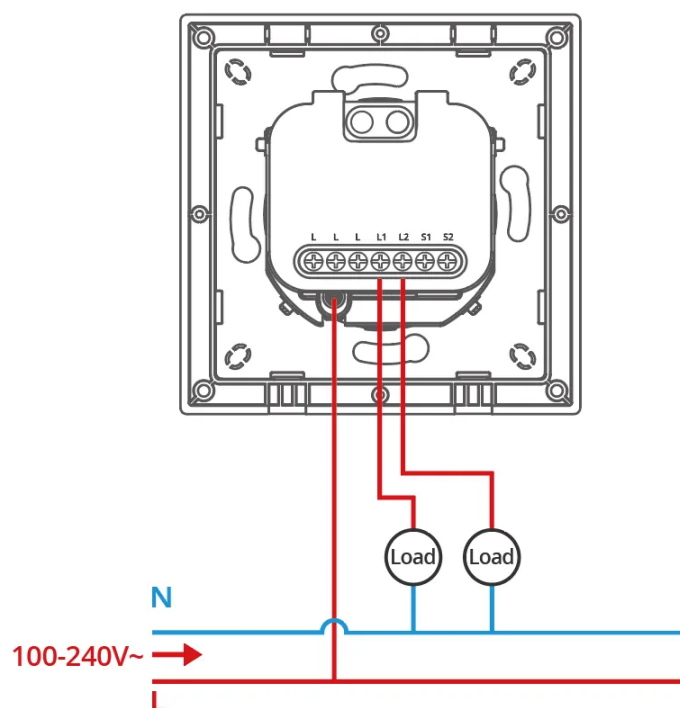
- ① Please install and maintain the device by a professional electrician. To avoid electric shock hazards, do not operate any connection or contact the terminal connector while the device is powered on!
- ② To ensure the safety of your electrical installation, it's essential that either a Miniature Circuit Breaker (MCB) or a Residual Current operated Circuit-breaker with Integral Overcurrent protection (RCBO) with an electrical rating of 12A has been installed before the MINI-ZB2GS-L-E.

2. Pry off the switch cover



3. Wiring instruction

⚠ Make sure all wires are connected correctly.



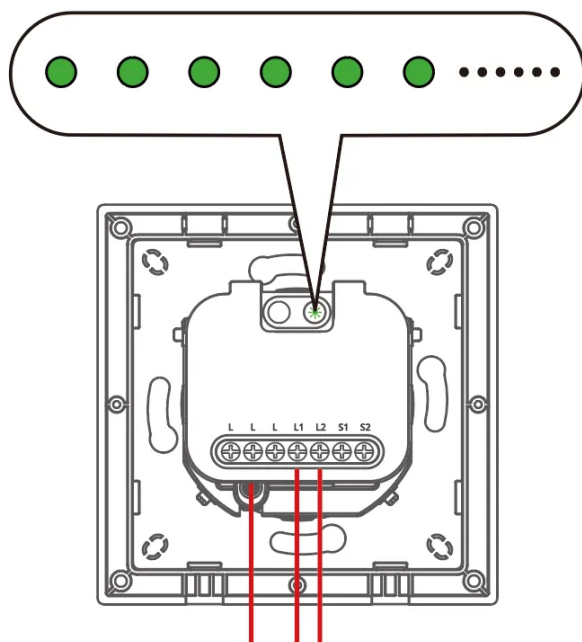
Instructions for wiring symbols

Terminals	Wires
-----------	-------

L	Live Terminal	L	Live Line (100–240V~)
L1	Live Output Terminal_1 (100–240V~)		
L2	Live Output Terminal_2 (100–240V~)		
S1	Switch_1		
S2	Switch_2		

4. Power on

After powering on, the device will enter the pairing mode by default during the first use, and the LED signal indicator will "flash slowly".



ⓘ The device will exit the pairing mode if you do not operate it within 3mins. When you want to enter the pairing mode again, long press device button on the device for 5 seconds until the signal light "flashes slowly" and release.

Add device

1. Download the eWeLink App

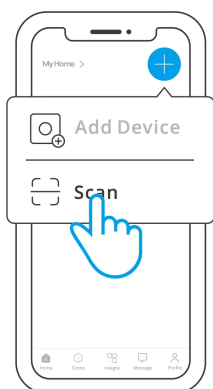
Please download the "eWeLink" App from Google Play Store or Apple App Store.



2. Add SONOFF Zigbee gateway

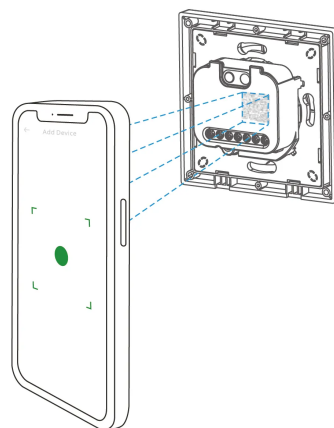
3. Network configuration

1



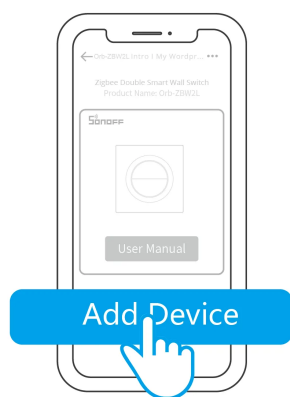
Enter "Scan"

2



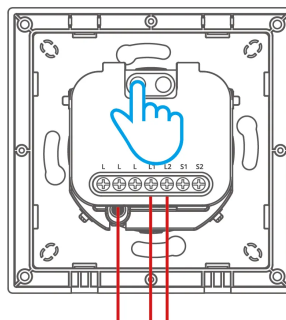
Scan the QR code on the device

3



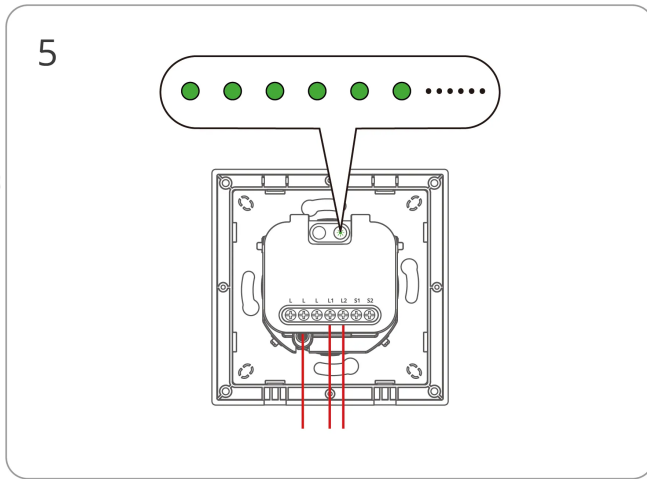
Select "Add Device"

4

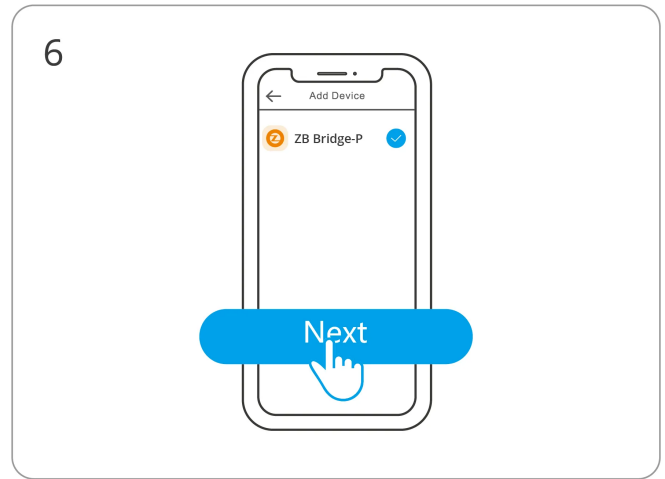


(If the device exits pairing mode)

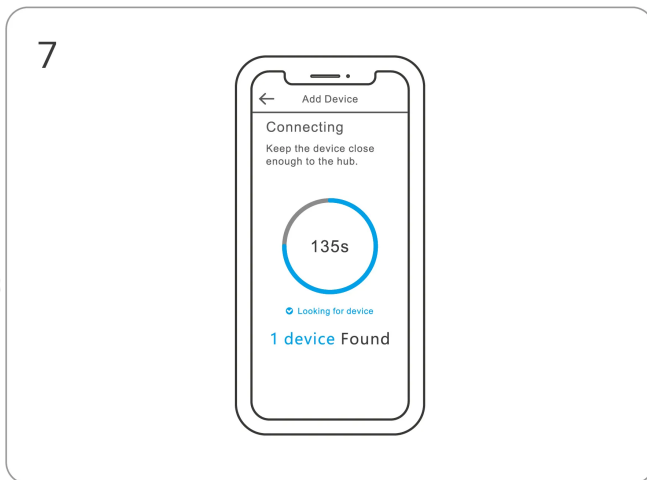
Long press the device button for 5 seconds



Check LED indicator flashing status (Slow flash)



Select Zigbee gateway



Wait until the addition is done

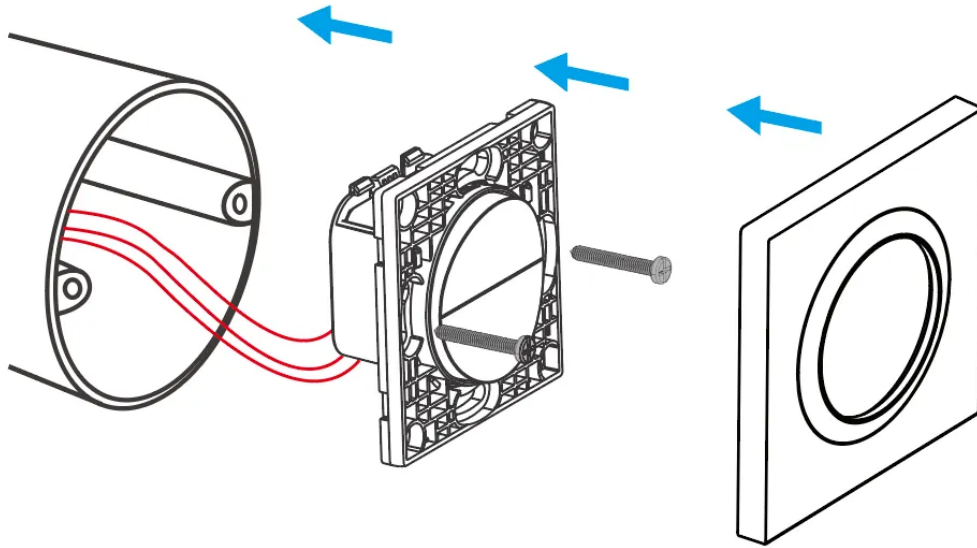
Compatible SONOFF Gateways

Recommended SONOFF gateway models: ZBBridge-P, ZBBridge-U, NSPanel Pro, iHost

Other compatible SONOFF gateway models: ZBDongle-P, ZBDongle-E, Dongle-M,

Dongle-PMG24, Dongle-LMG21

Installation



Factory Reset

Trigger conditions (any one condition met)

- Press and hold the device button for 10 seconds.
- Delete the device on the App.

EU Declaration of Conformity

Hereby, Shenzhen Sonoff Technologies Co., Ltd. declares that the radio equipment type MINI-ZB2GS-L-E is in compliance with Directive 2014/53/EU. The full text of the EU declaration of conformity is available at the following internet address:

<https://sonoff.tech/compliance/>

For CE Frequency

EU Operating Frequency Range:

Zigbee: 2405—2480 MHz

EU Output Power:

Zigbee≤10dBm

Under normal use of condition, this equipment should be kept at a separation distance of at least 20 cm between the antenna and the body of the user.

WEEE Disposal and Recycling Information



WEEE Disposal and Recycling Information All products bearing this symbol are waste electrical and electronic equipment (WEEE as in directive 2012/19/EU) which should not be mixed with unsorted household waste. Instead, you should protect human health and the environment by handing over your waste equipment to a designated collection point for the recycling of waste electrical and electronic equipment, appointed by the government or local authorities. Correct disposal and recycling will help prevent potential negative consequences to the environment and human health. Please contact the installer or local authorities for more information about the location as well as terms and conditions of such collection points.

Scatola	Manuale	Borsa	Borsa
PAP 21	PAP 22	CPE 7	LDPE 4
Carta	Carta	Plastica	Plastica
RACCOLTA DIFFERENZIATA			
Verifica le disposizioni del tuo Comune.			
Separa le componenti e conferiscile in modo corretto.			



Manufacturer: Shenzhen Sonoff Technologies Co., Ltd.

Address: 3F & 6F, Bldg A, No. 663, Bulong Rd, Shenzhen, Guangdong, 518000, China

Service email: support@itead.cc Website: sonoff.tech

Made in China



FR

**Cet appareil et
ses accessoires
se recyclent**

À DÉPOSER
EN MAGASIN



OU

À DÉPOSER
EN DÉCHÈTERIE



Points de collecte sur www.quefairedemesdechets.fr
Privilégiez la réparation ou le don de votre appareil !

