

# User Manual MINI-ZBDIM-E (EN)



Zigbee Dimmer Wall Switch

User Manual V1.0

## Introduction

Orb-ZBDIM is a Zigbee 3.0 smart dimmer switch, designed to easily replace traditional wall switches and integrate ordinary lighting fixtures into a smart home system. It offers broad compatibility with various dimmable light sources, including LED bulbs, incandescent lamps, halogen lights, and electronic transformers. The switch incorporates built-in features such as overheat protection, power detection, and calibration, ensuring both smooth dimming performance and long-term safety and stability. Additionally, Orb-ZBDIM supports Zigbee signal relaying, which enhances the communication stability of the entire Zigbee network.



Remote Control



Zigbee Repeater



Smart Scene



Smart Timer



Calibration



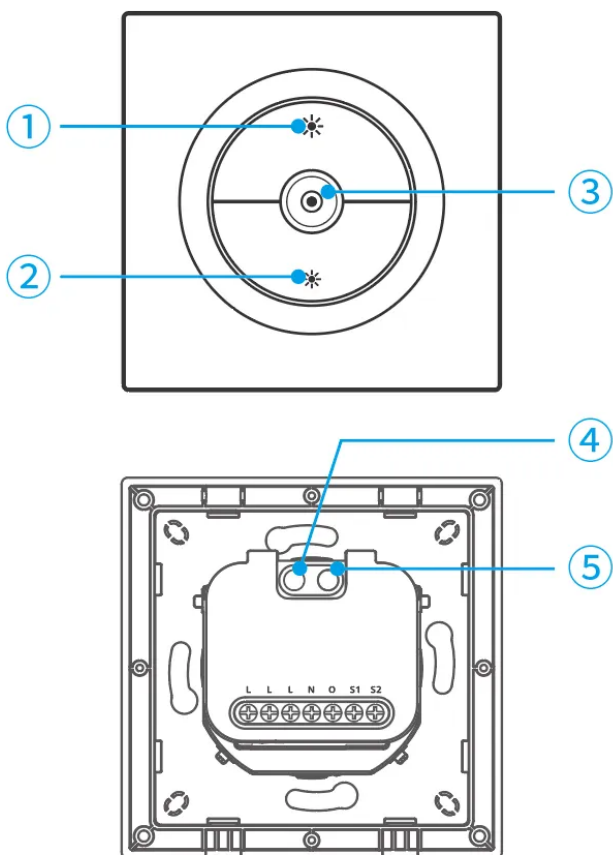
Over-Temperature  
Protection



Power Detection



Voice Control



### ① Brightness Increase Button

- Short or long press: Increase the brightness of the light

### ② Brightness Decrease Button

- Short or long press: Decrease the brightness of the light

### ③ Light On/Off Button

- Short press: Turn the light on or off

### ④ Device Button

- Short press: Turn the light on or off
- Press and hold for 5 seconds: Device enters network pairing mode (pairing duration: 3 minutes)
- Press and hold for 10 seconds: Automatic dimming calibration
- Press and hold for 15 seconds: Restore factory settings


### ⑤ LED Indicator (Blue)

- Slow flash: Device is in pairing mode
- Fast flash: Abnormal connection with the gateway
- Keeps on: Normal connection with the gateway
- Keeps off: Pairing failure/Timeout
- Flashes five times quickly: Trigger Factory Reset
- Breathing pattern: Device is calibrating

## Platform Certification

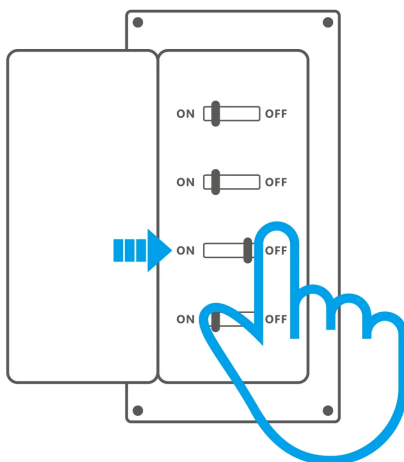


## Specification

Product name	Orb-ZBDIM
Product series	Fusion Series
Product type	Zigbee Dimmer Wall Switch
Model	MINI-ZBDIM-E
MCU	EFR32MG21
Rating	220-240V~ 50Hz 400W Max Resistive load  ε
LED	200VA
Zigbee	IEEE 802.15.4
Net weight	83g
Product dimension	86x86x33.7mm
Color	White
Casing material	PC
Diameter of wiring (recommend)	0.75mm <sup>2</sup> to 1.5mm <sup>2</sup> / 18AWG to 16AWG SOL/STR copper conductor only
Applicable place	Indoor
Working temperature	10T40 (-10°C~40°C)
Working humidity	5-95%RH, non-condensing
Certification	CE/RoHS

## Installation

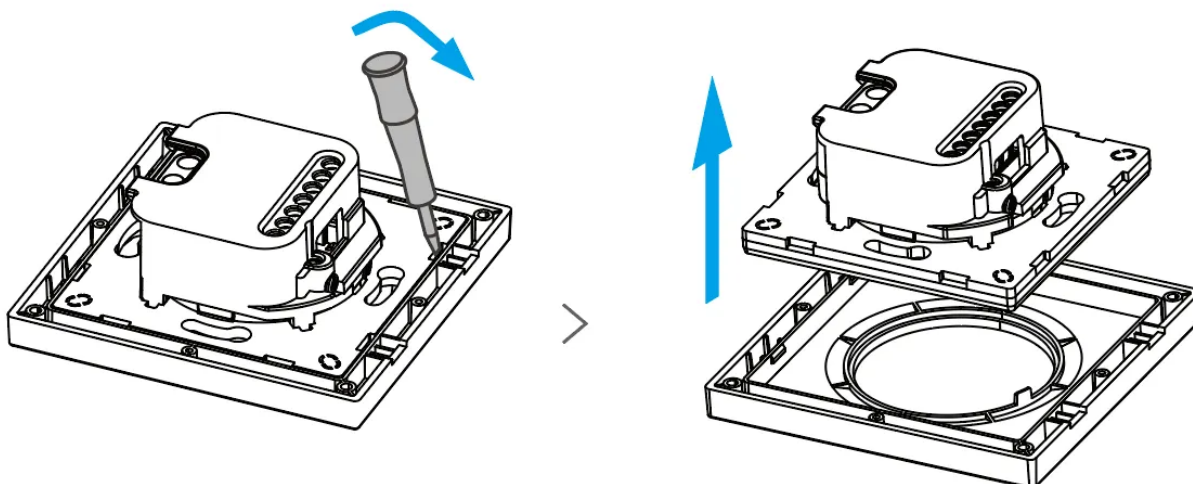
### 1. Power off



## WARNING

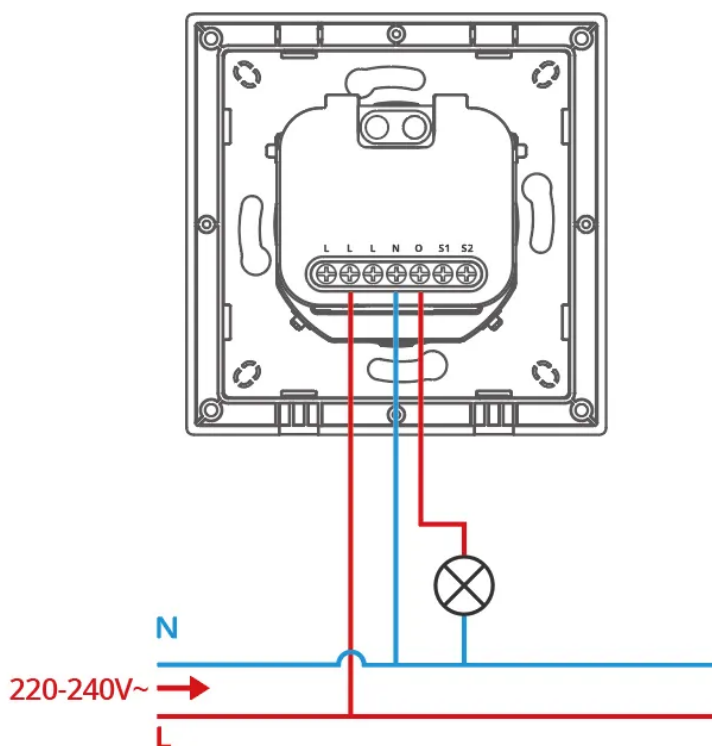
- ① Please install and maintain the device by a professional electrician. To avoid electric shock hazards, do not operate any connection or contact the terminal connector while the device is powered on!
- ② To ensure the safety of your electrical installation, it's essential that either a Miniature Circuit Breaker (MCB) or a Residual Current operated Circuit-breaker with Integral Overcurrent protection (RCBO) with an electrical rating of 2A has been installed before the MINI-ZBDIM-E.

## 2. Pry off the switch cover



### 3. Wiring instruction

⚠ Make sure all wires are connected correctly.



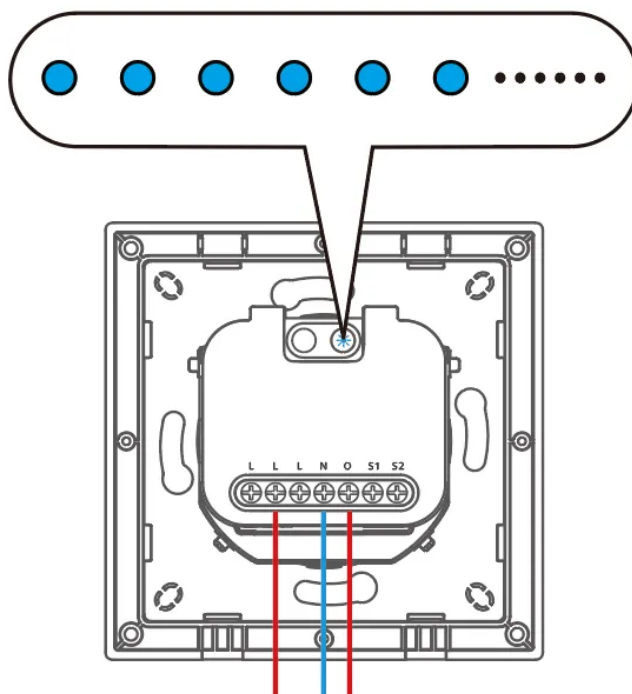
Instructions for wiring symbols

Terminals	Wires
-----------	-------

L	Live Terminal	L	Live Line (220–240V~)
N	Neutral Terminal	N	Neutral Line
O	Live Output Terminal (220–240 V~)		
S1	Switch_1		
S2	Switch_2		

## 4. Power on

After powering on, the device will enter the pairing mode by default during the first use, and the LED signal indicator will "flash slowly".

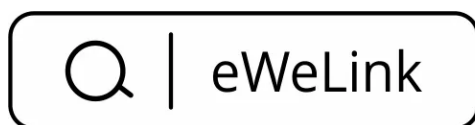


ⓘ The device will exit the pairing mode if you do not operate it within 3mins. When you want to enter the pairing mode again, long-press the device button on the device for 5 seconds until the signal light "flashes slowly" and release.

## Add device

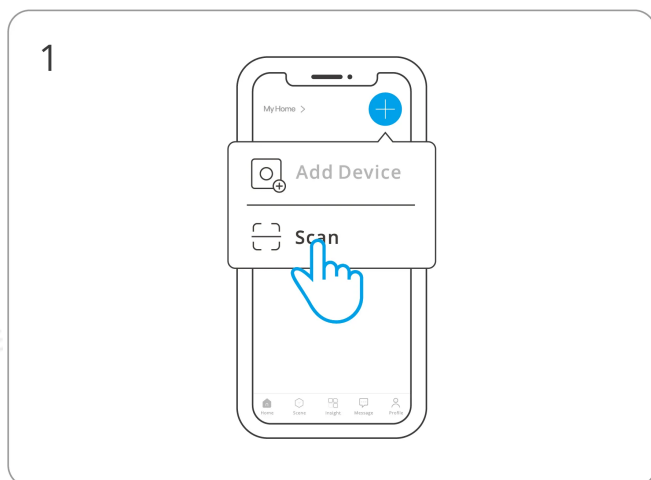
① Download the eWeLink App

Please download the "eWeLink" App from Google Play Store or Apple App Store.

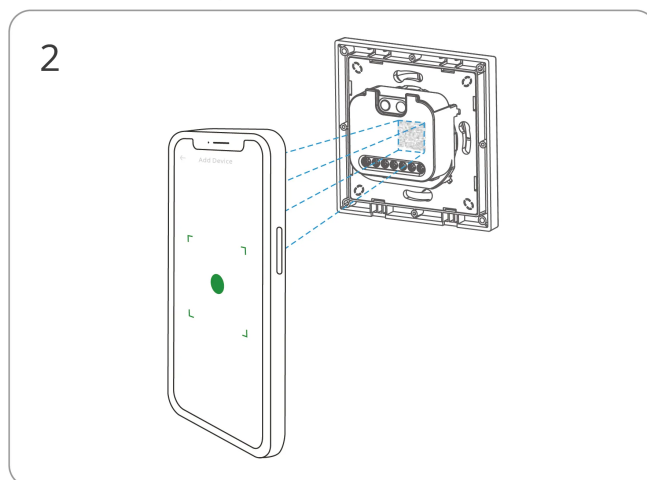


## ② Add SONOFF Zigbee gateway

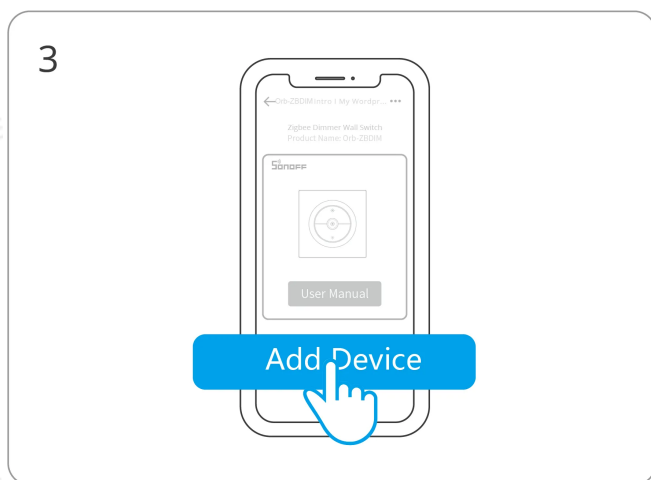
## ③ Network configuration



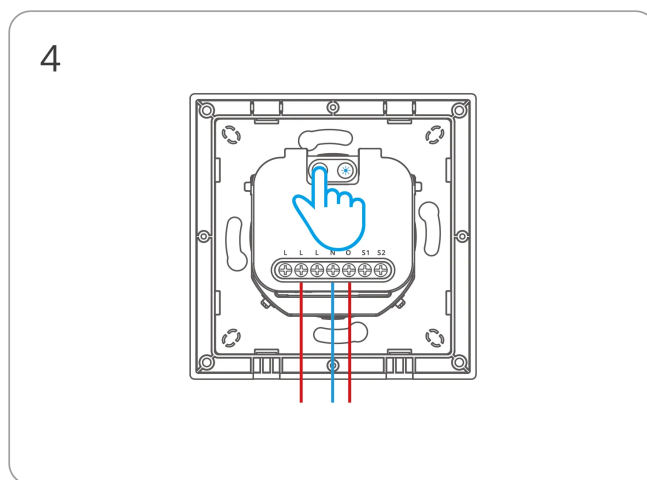
Enter "Scan"



Scan the QR code on the device



Select "Add Device"



(If the device exits pairing mode)

Long press the device button for 5 seconds



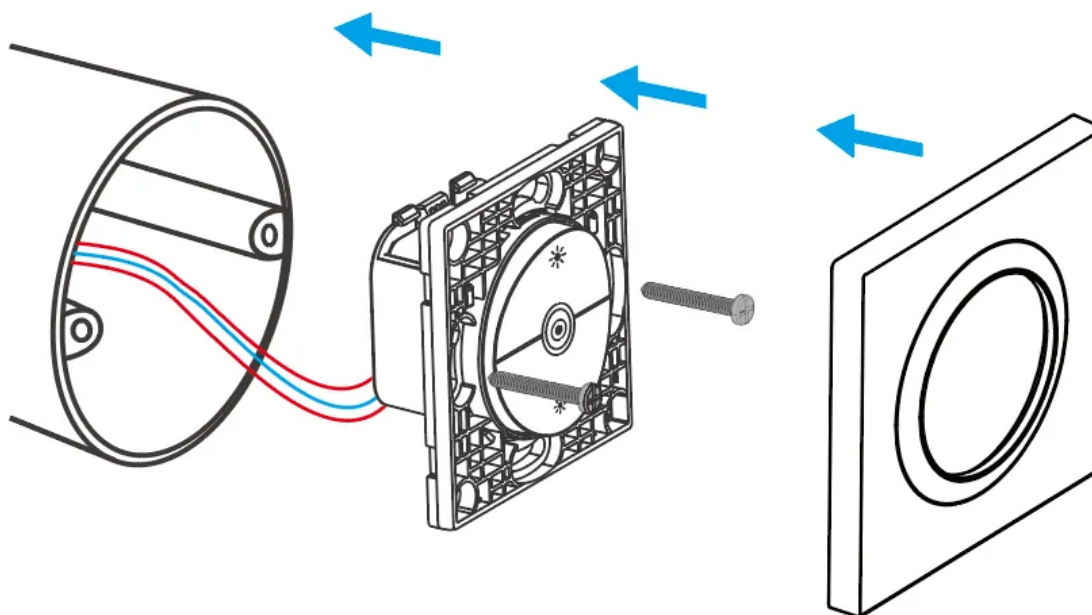


Other compatible S  
Dongle-PMG24, D

Other compatible S  
Dongle-PMG24, D

Other compatible S  
Dongle-PMG24, D

Other compatible S  
Dongle-PMG24, D



## Factory Reset

Trigger conditions (any one condition met)

- Delete the device on eWeLink App.
- The device that has been successfully paired can be paired again with another eWeLink account to add it.
- Press and hold the device button for 15 seconds.

## EU Declaration of Conformity

Hereby, Shenzhen Sonoff Technologies Co., Ltd. declares that the radio equipment type MINI-ZBDIM-E is in compliance with Directive 2014/53/EU. The full text of the EU declaration of conformity is available at the following internet address:

<https://sonoff.tech/compliance/>

## For CE Frequency

### EU Operating Frequency Range:

Zigbee: 2405—2480 MHz

BLE: 2402—2480 MHz

### EU Output Power:

Zigbee≤10dBm

BLE≤10dBm

Under normal use of condition, this equipment should be kept at a separation distance of at least 20 cm between the antenna and the body of the user.

## WEEE Disposal and Recycling Information



WEEE Disposal and Recycling Information All products bearing this symbol are waste electrical and electronic equipment (WEEE as in directive 2012/19/EU) which should not be mixed with unsorted household waste. Instead, you should protect human health and the environment by handing over your waste equipment to a designated collection point for the recycling of waste electrical and electronic equipment, appointed by the government or local authorities. Correct disposal and recycling will help prevent potential negative consequences to the environment and human health. Please contact the installer or local authorities for more information about the location as well as terms and conditions of such collection points.

Scatola	Manuale	Borsa	Borsa
PAP 21	PAP 22	CPE 7	LDPE 4
Carta	Carta	Plastica	Plastica
RACCOLTA DIFFERENZIATA			
Verifica le disposizioni del tuo Comune.			
Separa le componenti e conferiscile in modo corretto.			

# SONOFF

Manufacturer: Shenzhen Sonoff Technologies Co., Ltd.

Address: 3F & 6F, Bldg A, No. 663, Bulong Rd, Shenzhen, Guangdong, 518000, China

Service email: support@itead.cc

Website: sonoff.tech

Made in China



FR

**Cet appareil et  
ses accessoires  
se recyclent**

À DÉPOSER  
EN MAGASIN



OU

À DÉPOSER  
EN DÉCHÈTERIE



Points de collecte sur [www.quefairedemesdechets.fr](http://www.quefairedemesdechets.fr)  
Privilégiez la réparation ou le don de votre appareil !

