

# User Manual MINI-ZBDIM (EN)



Zigbee Dimmer Switch

User Manual V1.0

## Introduction

The MINI DIM (Zigbee) is an ultra-compact Zigbee 3.0 smart dimmer controller that effortlessly upgrades traditional lighting fixtures. With a maximum load current of 2A, it seamlessly integrates with dimmable LED lamps, incandescent bulbs, halogen lamps and dimmable electronic transformers, enabling remote dimming, scheduled on/off, and smart automation via the app. Built-in overheat protection, power detection, and brightness calibration ensure both convenience and peace of mind for your smart home.



Remote Control



Smart Timer/Delay



Smart Scene



External Switch



Brightness  
Calibration



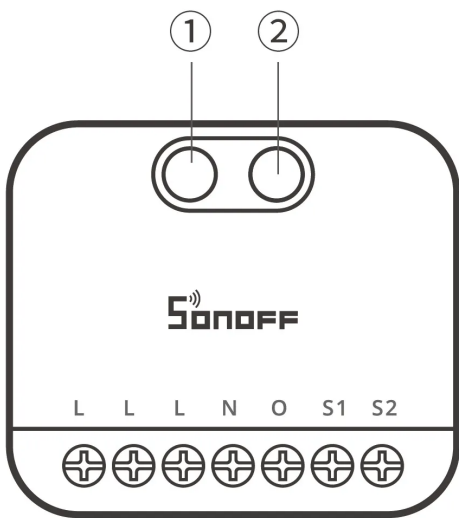
Excellent  
Compatibility



Over-Temperature  
Protection



Power Detection



### ① Button


- Single tap: Turn device on or off
- Press and hold for 5 seconds: Device enters the pairing mode (Pairing time 3 minutes)
- Click three times in succession: Switch external switch type
- Press and hold for 10 seconds: Auto-calibrate dimming
- Press and hold for 15 seconds: Restore factory settings

### ② LED indicator (Blue)

- Slow flash: Device is in pairing mode
- Fast flash: Abnormal connection with the gateway
- Keeps on: Normal connection with the gateway
- Keeps off: Pairing failure/Timeout
- Flashes three times quickly: Switch the external switch trigger type
- Flashes five times quickly: Trigger Factory Reset
- Breathing pattern: Device is calibrating

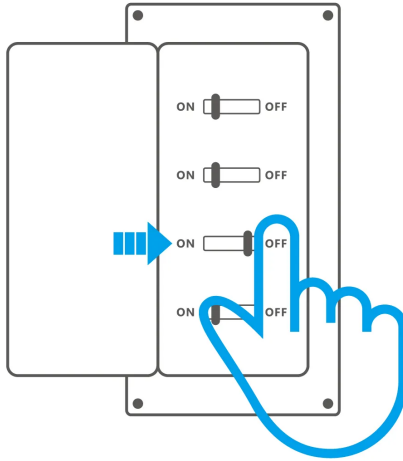
## Specification

Product name	MINI DIM (Zigbee)
Product series	MINI Extreme series

Product type	Zigbee Dimmer Switch
Model	MINI-ZBDIM
MCU	EFR32MG21
Rating	220–240V~ 50Hz 400W Max Resistive load  ε
LED	200VA
Zigbee	IEEE 802.15.4
Net weight	24.5g
Product dimension	45x39.4x16.8mm
Color	White
Casing material	PC
Diameter of wiring (recommend)	18AWG to 16AWG SOL/STR copper conductor only
Applicable place	Indoor
Working temperature	10T40 (–10°C~40°C)
Working humidity	5–95%RH, non–condensing
Certification	CE/RoHS

## Installation

### 1. Power off



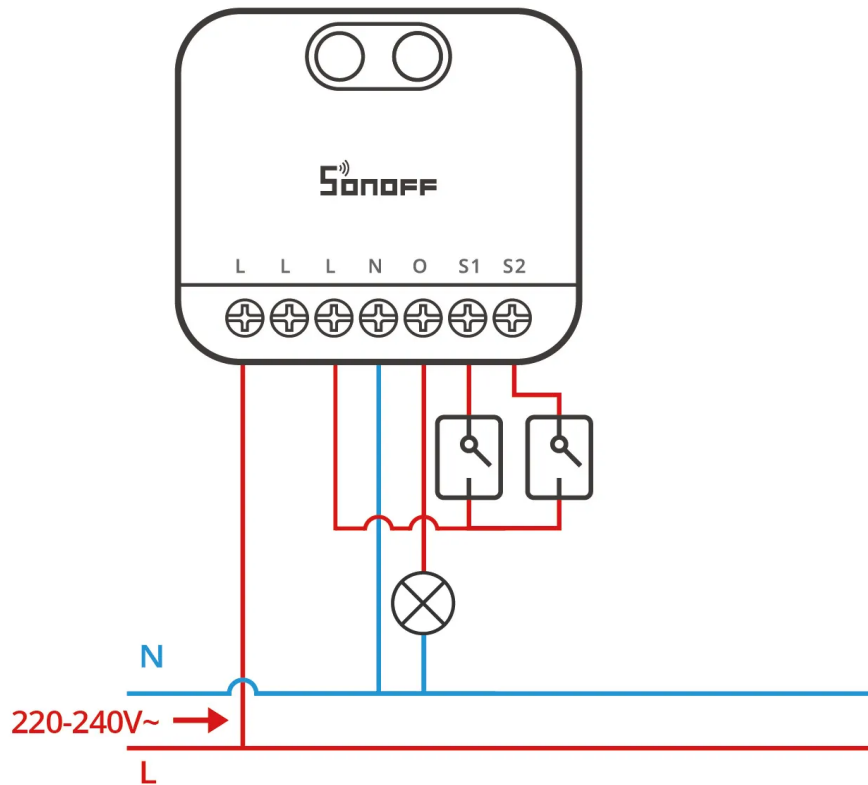
### WARNING

- ① Please install and maintain the device by a professional electrician. To avoid electric shock hazard, do not operate any connection or contact the terminal connector while the device is powered on!
- ② For single-phase use only (220–240V~). Connecting to multiple phases may result in damage to the device.
- ③ To ensure the safety of your electrical installation, it's essential either a Miniature Circuit Breaker (MCB) or a Residual Current operated Circuit-breaker with Integral Overcurrent protection(RCBO) with an electrical rating of 2A has been installed before the MINI-ZBDIM.

## 2. Wiring instruction

- Ⓢ It is prohibited to connect S1 and S2 terminals to the neutral or ground wire, in order to avoid damaging the equipment and causing danger.
- Ⓢ Make sure all wires are connected correctly.
- Ⓢ Supported switches are rocker switch and push button and factory default by supporting double push button.

Method of change the switch type: short press the button 3 times until the LED signal indicator flashes 3 times quickly, now you change the switch type successfully.

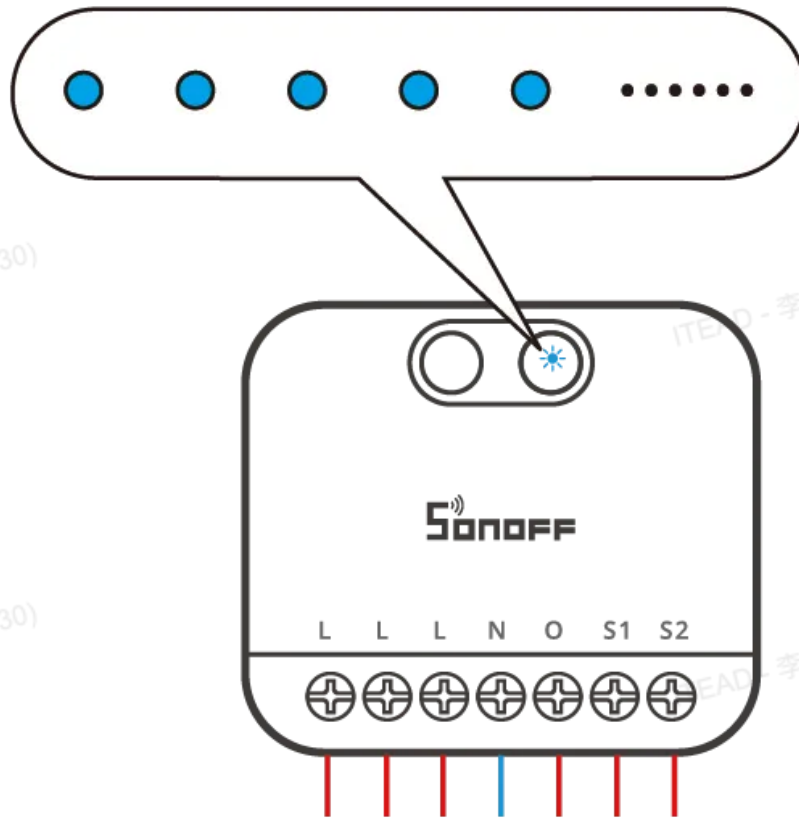


### Instructions for wiring symbols

Terminals		Wires	
L	Live Terminal	L	Live Line (220–240V~)
N	Neutral Terminal	N	Neutral Line
O	Live Output Terminal (220–240 V~)		
S1	Switch_1		
S2	Switch_2		

### 3. Power on

After powering on, the device will enter the pairing mode by default during the first use and the LED signal indicator will "flash slowly".

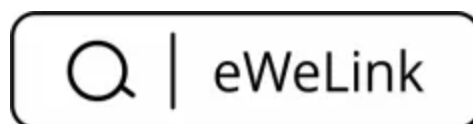


⚠ The device will exit the Pairing Mode if not paired within 3mins. When you want to enter the pairing mode again, long press the button on the device for 5 seconds until the signal light "flashes slowly" and release.

## Add device

### 1. Download the eWeLink App

Please download the "eWeLink" App from Google Play Store or Apple App Store.



## 2. Add SONOFF Zigbee gateway

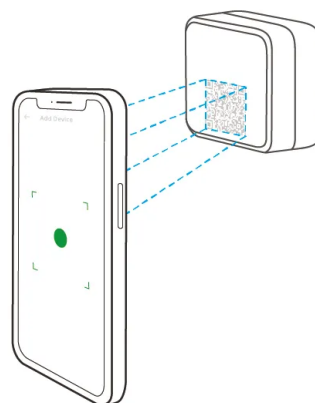
### 3. Network configuration

1



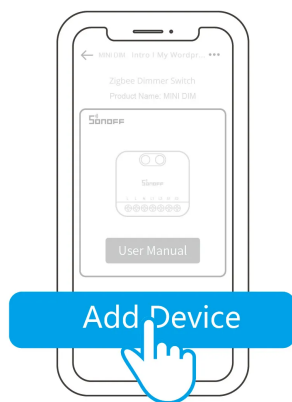
Enter "Scan"

2



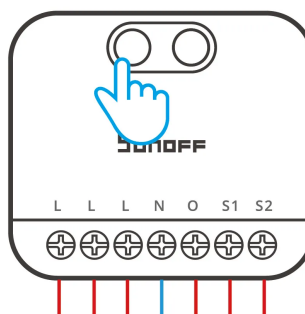
Scan the QR code on the device

3



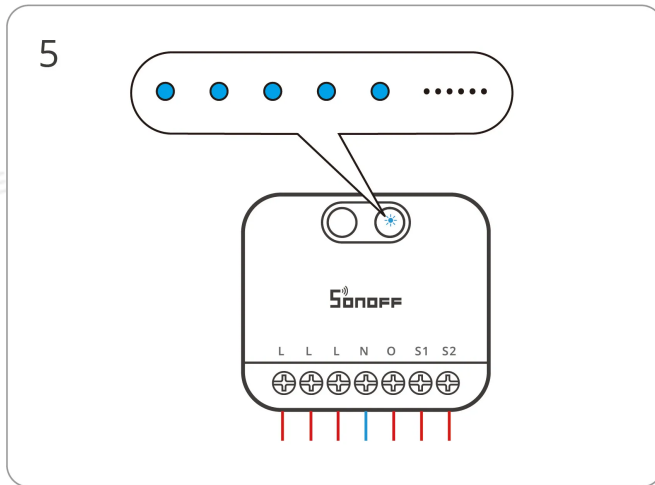
Select "Add Device"

4

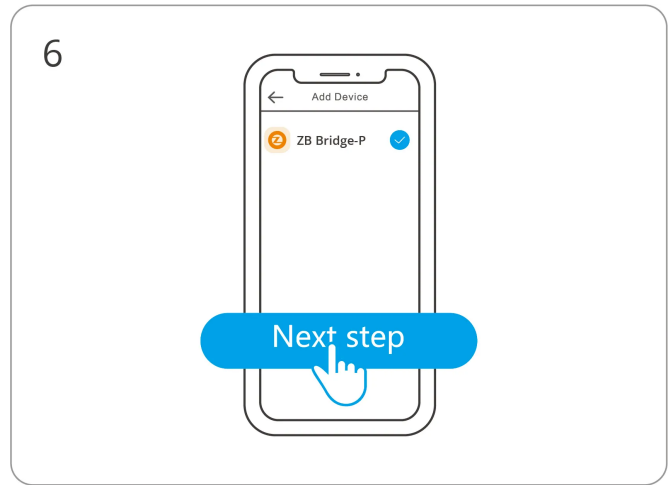


(If the device exits pairing mode)

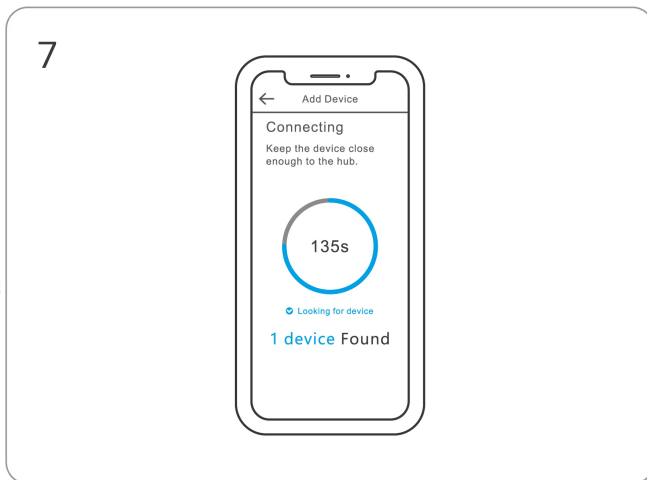
Long press the button for 5 seconds



Check LED indicator flashing status (Slow flash)



Select Zigbee gateway



Wait until the addition is done

## Brightness Range Calibration

To use percentage-based brightness control, it is necessary to calibrate the brightness range of the device. The calibration methods are as follows:

- **Auto Calibration**

Press and hold the device button for 10 seconds, or use "Auto Calibration" in the eWeLink app. The breathing indicator shows calibration is in progress.

- **Manual Calibration**

Adjust the brightness limits manually in the eWeLink app for fine-tuned calibration.

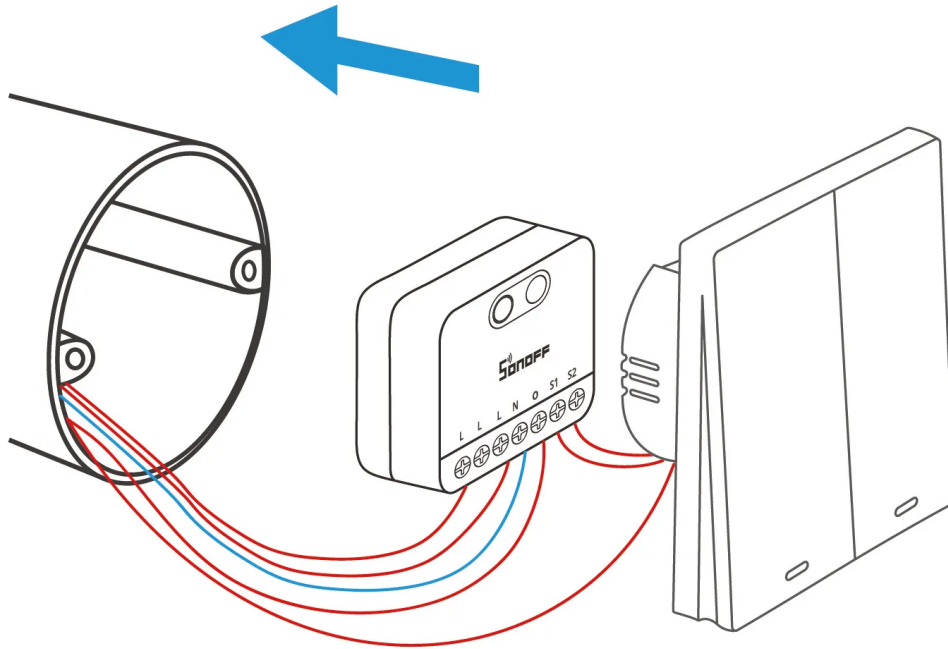
## Compatible SONOFF Gateways



Recommended SONOFF gateway models: ZBBridge-P, ZBBridge-U, NSPanel Pro, iHost.

Other compatible SONOFF gateway models: ZBDongle-P, ZBDongle-E, Dongle-M, Dongle-PMG24, Dongle-LMG21.

## Install the device in the mounting box



## Factory Reset

Trigger conditions (any one condition met)

- Delete the device on eWeLink App.
- The device that has been successfully paired can be paired again with another eWeLink account to add it.
- Press and hold the device button for 15 seconds.

# EU Declaration of Conformity

Hereby, Shenzhen Sonoff Technologies Co., Ltd. declares that the radio equipment type MINI-ZBDIM is in compliance with Directive 2014/53/EU. The full text of the EU declaration of conformity is available at the following internet address: <https://sonoff.tech/compliance/>

## For CE frequency

### EU Operating Frequency Range:

Zigbee : 2405—2480 MHz

BLE: 2402—2480 MHz

### EU Output Power:

Zigbee≤10dBm

BLE≤10dBm

Under normal use of condition, this equipment should be kept a separation distance of at least 20 cm between the antenna and the body of the user.

## WEEE Disposal and Recycling Information



WEEE Disposal and Recycling Information All products bearing this symbol are waste electrical and electronic equipment (WEEE as in directive 2012/19/EU) which should not be mixed with unsorted household waste. Instead, you should protect human health and the environment by handing over your waste equipment to a designated collection point for the recycling of waste electrical and electronic equipment, appointed by the government or local authorities. Correct disposal and recycling will help prevent potential negative consequences to the environment and human health. Please contact the installer or local authorities for more information about the location as well as terms and conditions of such collection points.

Scatola	Manuale
PAP 21	PAP 22
Carta	Carta
RACCOLTA DIFFERENZIATA	

Verifica le disposizioni del tuo Comune.

Separa le componenti e conferiscile in modo corretto.



Manufacturer: Shenzhen Sonoff Technologies Co., Ltd.

Address: 3F & 6F, Bldg A, No. 663, Bulong Rd, Shenzhen, Guangdong, 518000, China

Website: sonoff.tech

Service email: support@itead.cc

MADE IN CHINA



Points de collecte sur [www.quefairedemesdechets.fr](http://www.quefairedemesdechets.fr)  
Privilégiez la réparation ou le don de votre appareil !

