

User Manual MINI-ZBRBS (EN)



Smart Roller Shutter Switch

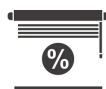
User Manual V1.0

Introduction

MINI-ZBRBS is a compact Zigbee smart curtain switch module designed to fit standard wall boxes, allowing you to easily upgrade a traditional motorized roller shutter into a smart curtain system. It supports motors with up to 1A load, and works with a Zigbee hub to enable app-based remote control, scheduled operation, and smart scene automation. Additionally, it functions as a Zigbee signal repeater, helping to strengthen and stabilize your Zigbee network coverage.



Remote Control



Percentage Control



Timer Schedule



Deviation Calibration



Relay Function



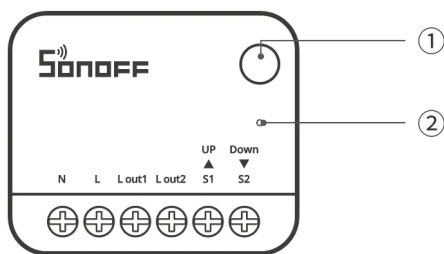
Smart Scene



Direction Reverse

① Button

- Press and hold for 5 seconds: The device enters the pairing mode. (Pairing time 3 minutes)
- Short press three times: Switch the external switch type.
- Press and hold for 10 seconds: The device starts the calibration.



② LED indicator (Blue)

- Keeps on: Normal connection with the gateway
- Slow flash: Device is in Pairing Mode
- Fast flash: Abnormal connection with the gateway
- Keeps off: Pairing failure/Timeout
- Breathing mode (press and hold the button for 10 seconds): The device is in calibration.
- Flashes three times: The switch type is successfully switched.

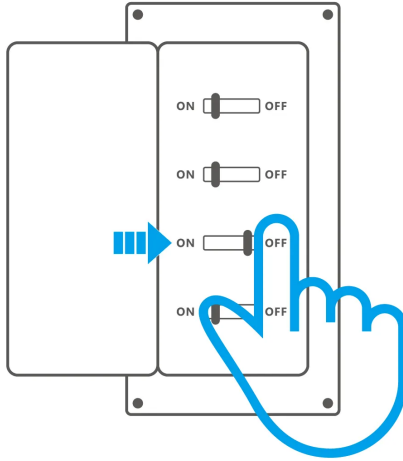
Specification

Product name	MINI-ZBRBS
Product series	MINI Extreme Series
Product type	Smart Roller Shutter Switch
Model	MINI-ZBRBS
MCU	EFR32MG21
Rating	100-240V~ 50/60Hz 1A Max (M)

Wireless connectivity	Zigbee 3.0
Net weight	25.1g
Product dimension	39.5x33x16.8mm
Color	White
Casing material	PC
Applicable place	Indoor
Working temperature	10T40 (−10℃~40℃)
Working humidity	5–95%RH, non–condensing
Max. Altitude	2000m
Diameter of wiring(recommend):	18AWG to 14AWG SOL/STR copper conductor only
Certification	CE/FCC/RoHS
FCC ID	2APN5–MINIZBRBS
Pollution degree	II
Rated impulse voltage	4kV
Automatic action	10000 Cycles
Control type	Type 1.B

Installation

1. Power off



WARNING

Please install and maintain the device by a professional electrician. To avoid electric shock hazards, do not operate any connection or contact the terminal connector while the device is powered on!

2. Wiring instructions

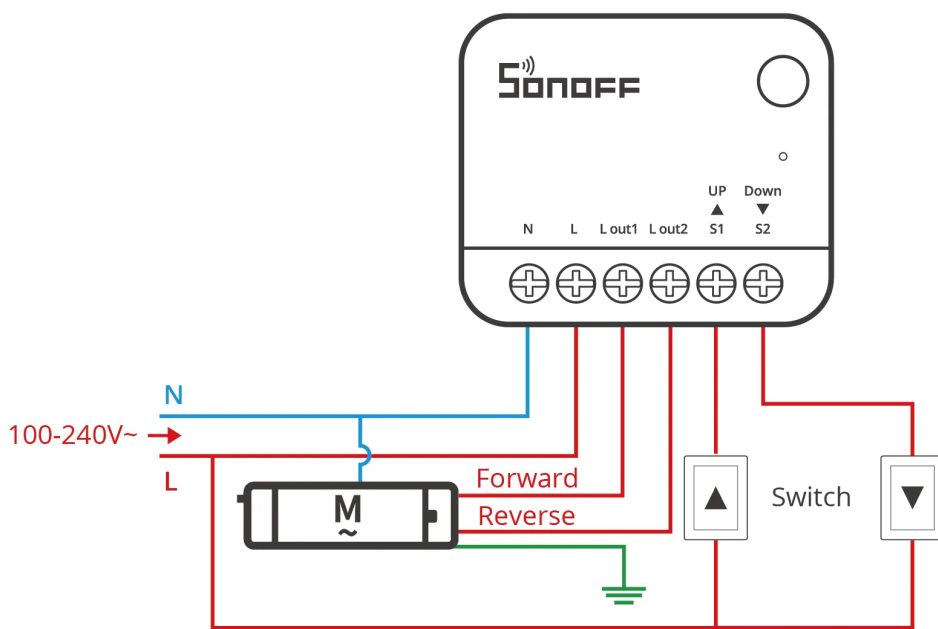
To ensure the safety of your electrical installation, it's essential that either a Miniature Circuit Breaker (MCB) or a Residual Current operated Circuit-breaker with Integral Overcurrent protection(RCBO) with an electrical rating of 1A has been installed before the MINI-ZBRBS.

Caution: For single-phase use only (100–240V~). Connecting to multiple phases may result in damage to the device.

Momentary Switch Wiring:

ITEAD - 黎业军

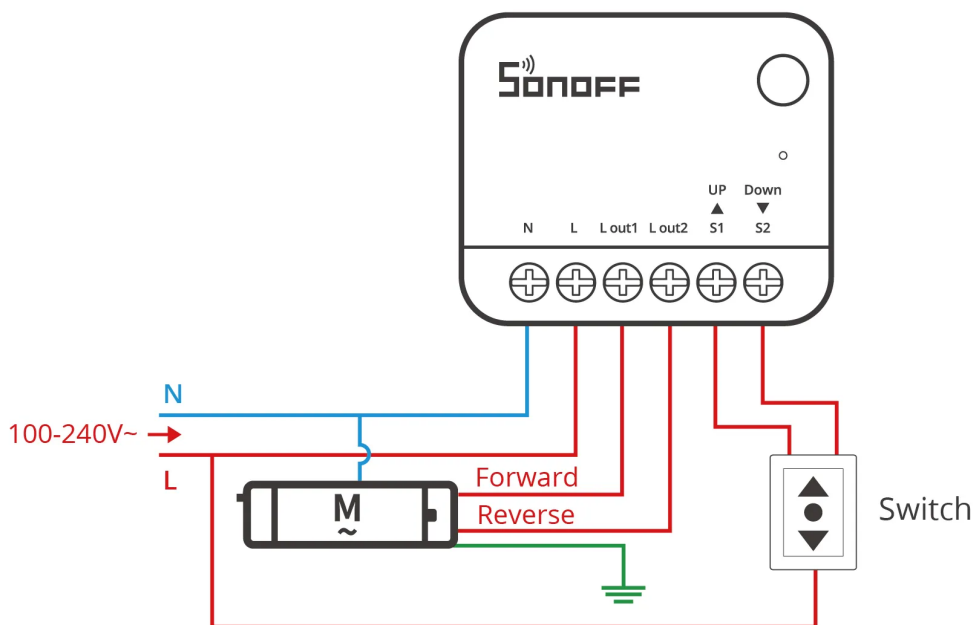
ITEAD - 黎业军



Three-Position Rocker Switch Wiring:

ITEAD - 黎业军(2602432)

ITEAD - 黎业军(2602432)



ITEAD - 黎业军

ITEAD - 黎业军

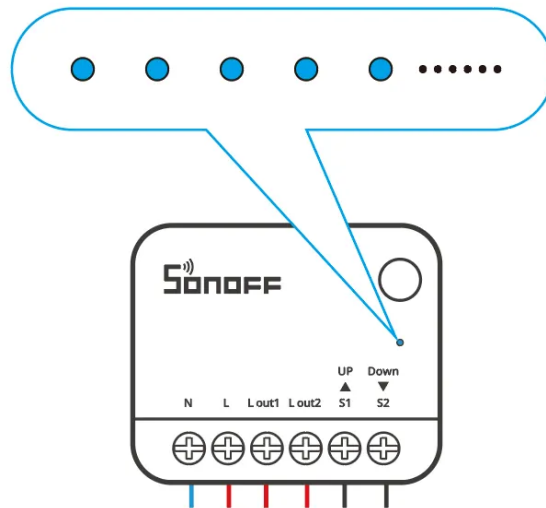
*Make sure all wires are connected correctly.

Instructions for wiring symbols

Terminals		Wires	
N	Neutral Line	N	Neutral Line
L	Live Line	L	Live Line (100–240V~)
L out1	Live Output Terminal__1(100–240V~)	Forward Line	Motor Forward Line
L out2	Live Output Terminal__2(100–240V~)	Reverse Line	Motor Reverse Line
S1	Switch_1 (Forward Control)		
S2	Switch_2 (Reverse Control)		

3. Power on

After powering on, the device will enter the pairing mode by default during the first use and the LED signal indicator will "flash slowly".



* The device will exit the Pairing Mode if not paired within 3mins. When you want to enter the pairing mode again, long press the button on the device for 5 seconds until the signal light "flashes slowly" and release.

* As the maximum one-way allowable continuous operation time for the motor in this device is 2mins, please pause the operation before the curtain reaches its limit position to

avoid damaging the motor.

Check the Device Status

1. External switch type

- ① The types of external switches supported are three-position rocker switches and momentary switches, with the default setting from the factory being the rocker switch (Edge Mode).
- ② The method to switch the external switch type: Short-press the button three times and the blue light flashes 3 times, then the switch type is switched successfully.
- ③ External switch trigger mode switching sequence (cycle): Edge Mode → Pulse Mode → Following Mode

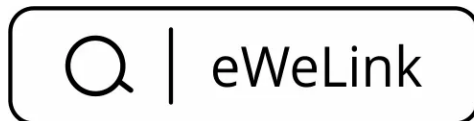
2. Roller shutter direction test

Press the external switch to check if the roller shutter moves in the correct direction. If it does not, power off the device, swap the Lout1 and Lout2 wires, and test again.

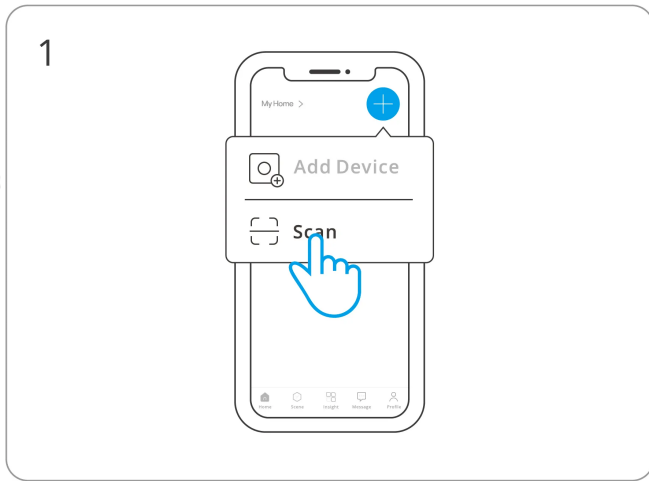
Add Device

1. Download the eWeLink App & Add SONOFF Zigbee Gateway

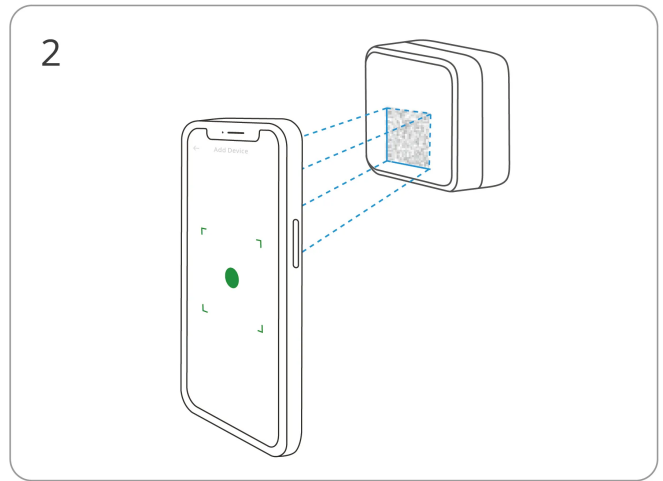
Please download the "eWeLink" App from **Google Play Store** or **Apple App Store**.



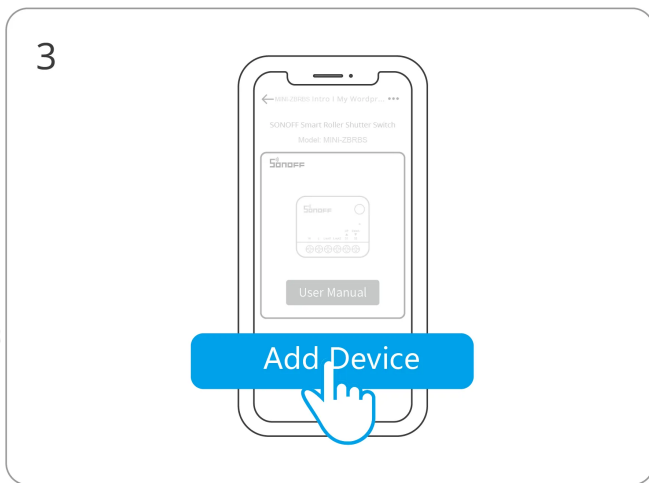
2. Scan QR code to add the device.



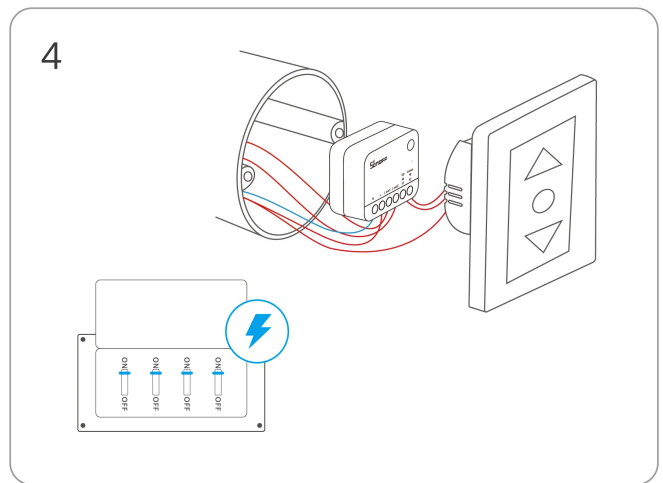
Enter "Scan"



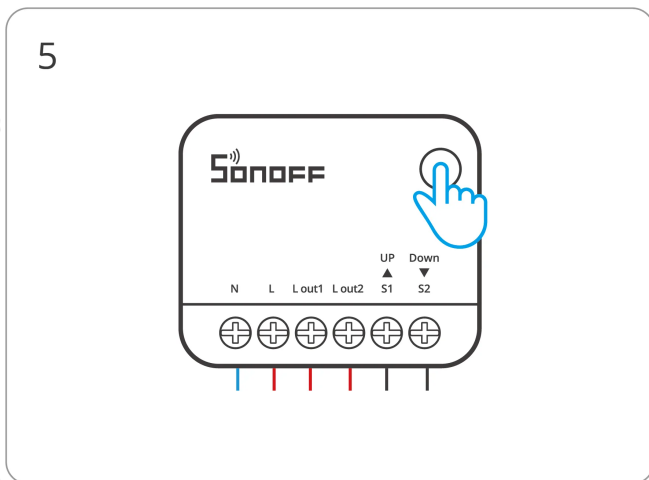
Scan the QR code on the device



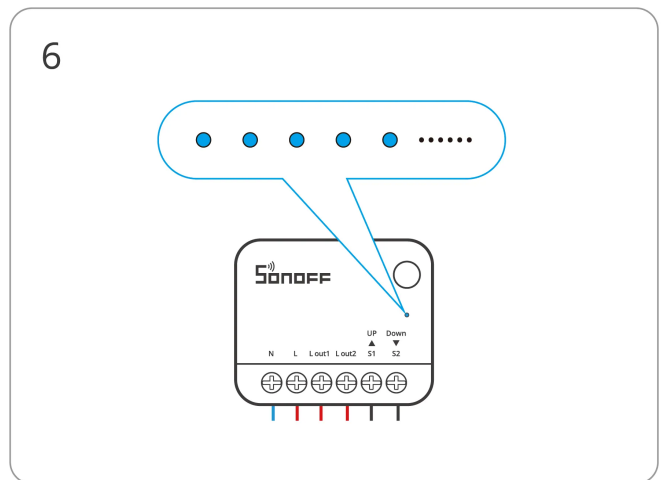
Select "Add Device"



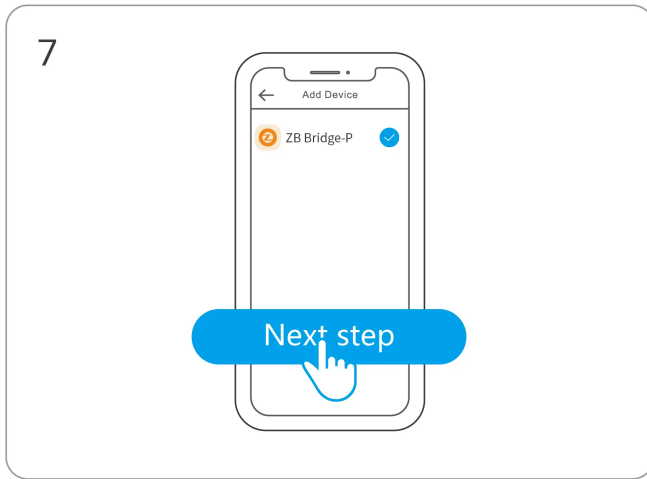
Power on the device



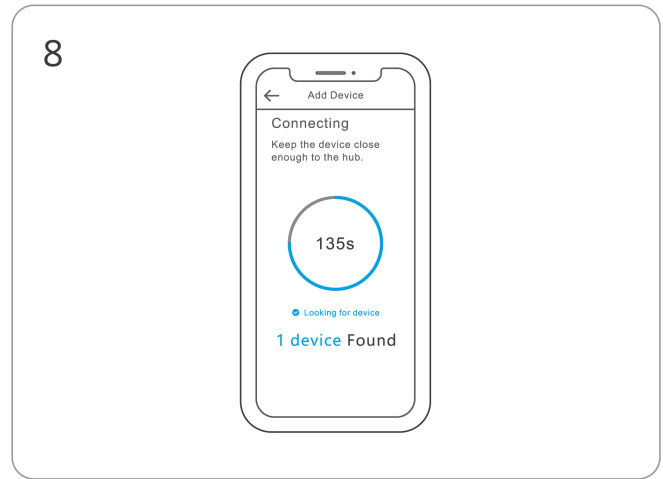
Long press the button for 5 seconds



The LED indicator flashes slowly for 180s



Select Zigbee gateway



Wait until the addition is done

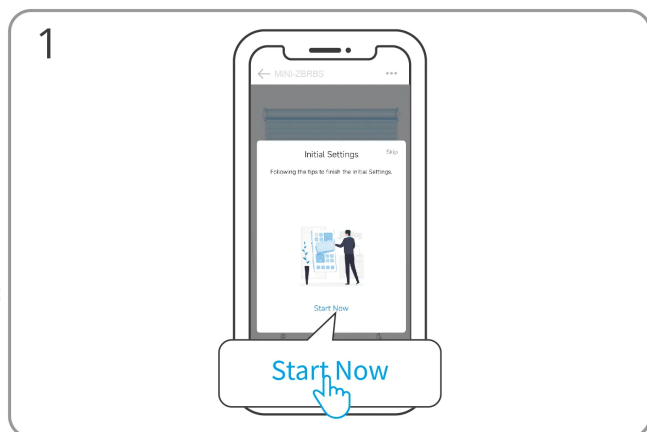
Travel Calibration

⚠ Using percentage control requires travel calibration. Please select one of the following two calibration options based on your needs.

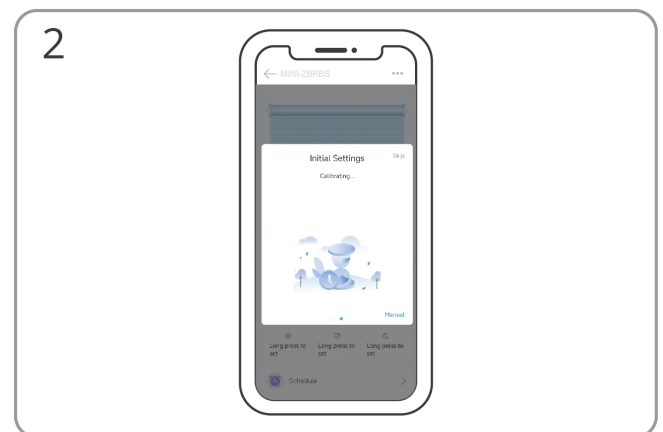
Method 1:

Users can use the "Travel Calibration" pop-up window in the eWeLink App, or open the "Initial Settings" on the device settings page and then perform "Automatic Calibration" or "Manual Calibration" according to the text instructions in the App.

Automatic calibration

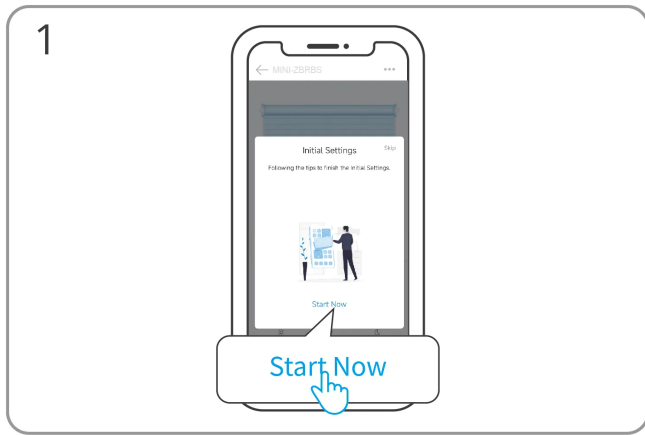


Click "Start Now"

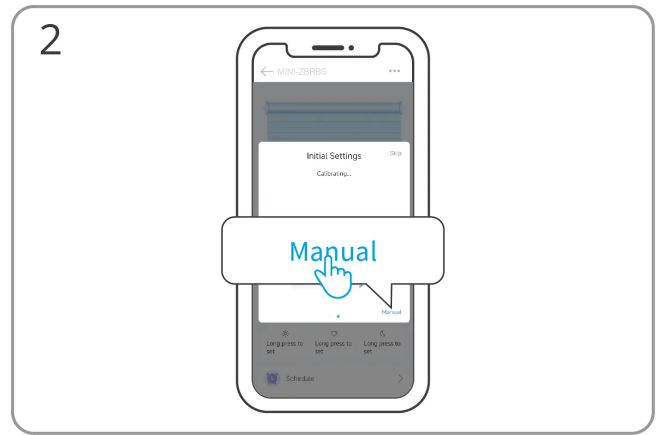


Wait for the automatic calibration to complete

Manual calibration



Click "Start Now"



Click "Manual"



Select "Next" to mark the "fully open" position

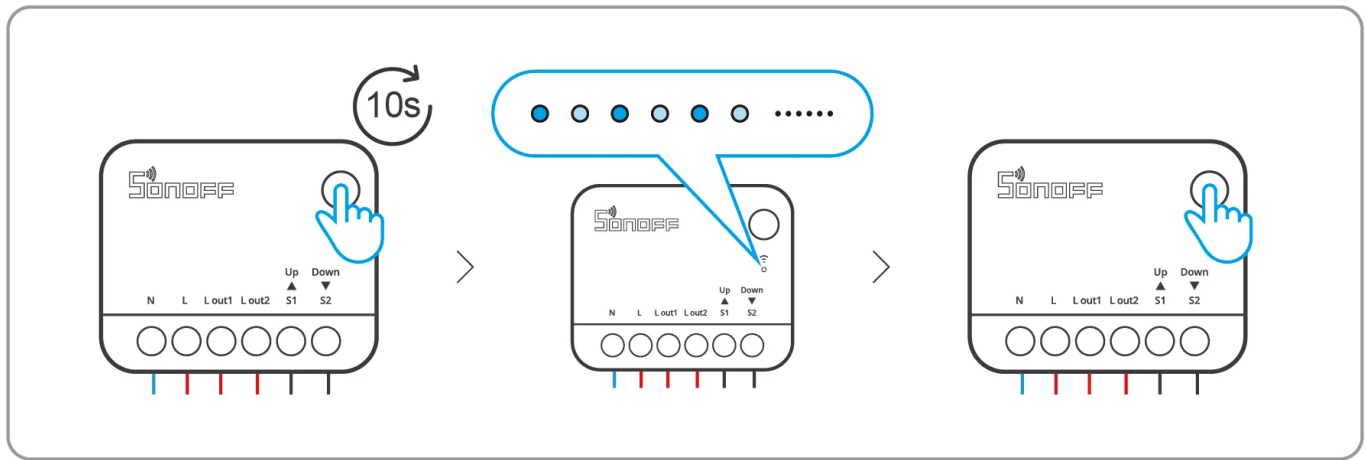


Select "Done" to mark the "fully close" position

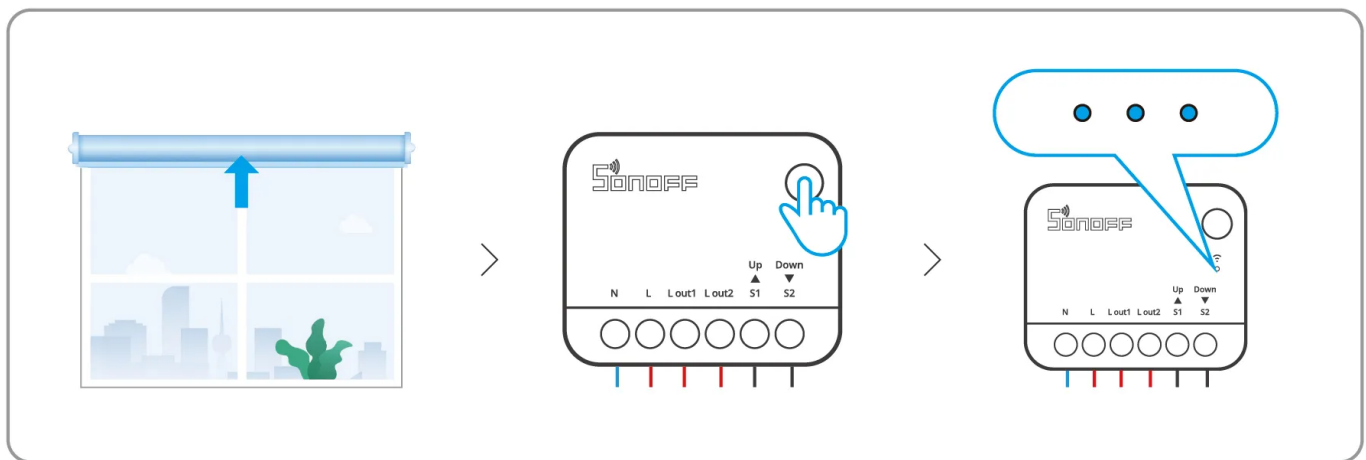
Method 2:

The user can perform the calibration operation using the device button. If there is any deviation in the calibration result, the calibration can be repeated until the desired accuracy is achieved.

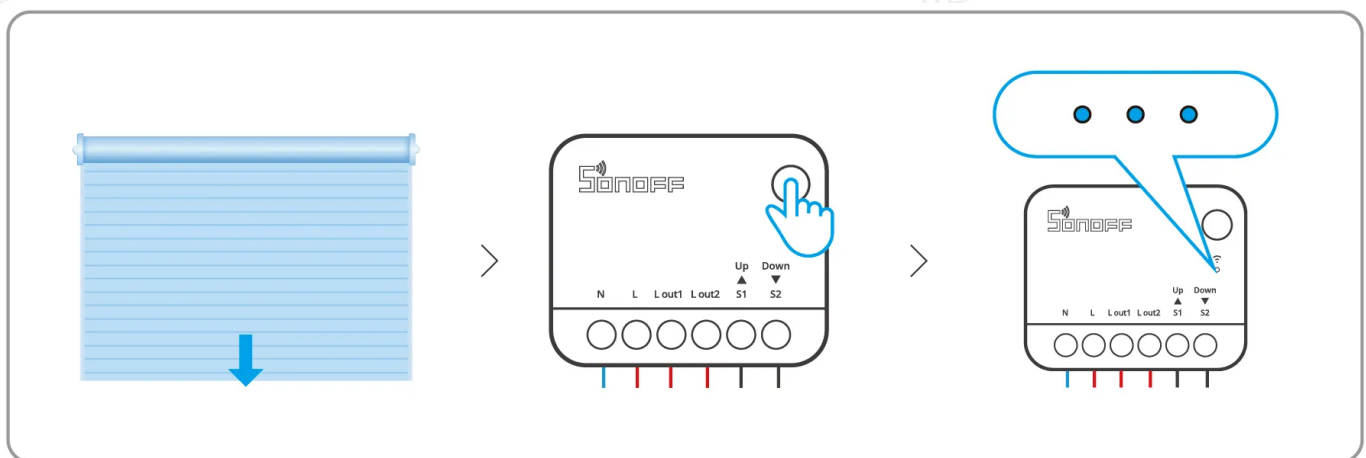
- ① Press and hold the device button for more than 10 seconds until the LED indicator enters breathing mode. Then, briefly press the device button to enter "Manual Calibration" mode.



② Manually open the curtains completely, then briefly press the device button until the LED indicator flashes three times.



③ Wait for the device to automatically close the curtains, then briefly press the device button again until the LED indicator flashes three times. This completes the "Manual Calibration".

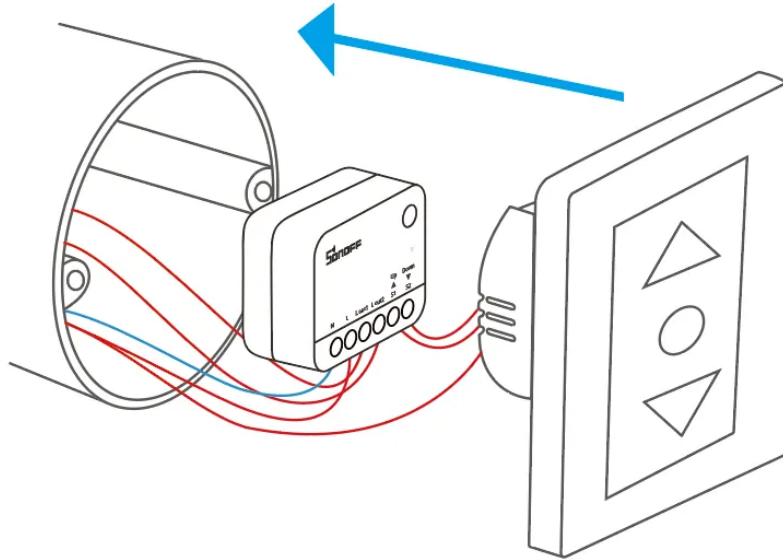


Matched Gateways

Recommended SONOFF gateway models: ZBBridge-P, ZBBridge-U, NSPanel Pro, iHost

Other compatible SONOFF gateway models: ZBDongle-P, ZBDongle-E

Install the Device in the Mounting Box



*The product is designed to be completely installed into a flush mounted box and enclosed with a cover plate or switch that fullfills the corresponding national standard requirement. There shall be no exposure of any part of the product after installation.

*Les produits sont conçus pour être complètement installés dans une boîte encastrée et enfermés avec une plaque de couvercle ou un commutateur qui remplissent les exigences correspondantes de la norme nationale. Il n'y aura aucune exposition d'une partie quelconque du produit après installation.

Factory Reset

Trigger Conditions (Any of the following):

- Press and hold the device button for 5 seconds.
- Delete the device from the eWeLink app.

- Operate via external switch:

Rocker switch: Toggle the "UP" and "DOWN" keys alternately more than 3 times within 6 seconds. (     ) 。

Momentary switch: Press the "UP" key more than 6 times within 6 seconds.

FCC compliance statement

1. This device complies with part 15 of the FCC Rules. Operation is subject to the following two conditions:

- (1) This device may not cause harmful interference, and
- (2) This device must accept any interference received, including interference that may cause undesired operation.

2. Changes or modifications not expressly approved by the party responsible for compliance could void the user's authority to operate the equipment.

Note: This equipment has been tested and found to comply with the limits for a Class B digital device, pursuant to part 15 of the FCC Rules. These limits are designed to provide reasonable protection against harmful interference in a residential installation. This equipment generates, uses and can radiate radio frequency energy and, if not installed and used in accordance with the instructions, may cause harmful interference to radio communications. However, there is no guarantee that interference will not occur in a particular installation. If this equipment does cause harmful interference to radio or television reception, which can be determined by turning the equipment off and on, the user is encouraged to try to correct the interference by one or more of the following measures:

- Reorient or relocate the receiving antenna.
- Increase the separation between the equipment and receiver.
- Connect the equipment into an outlet on a circuit different from that to which the receiver is connected.
- Consult the dealer or an experienced radio/TV technician for help.

FCC Radiation Exposure statement:

This equipment complies with FCC radiation exposure limits set forth for an uncontrolled environment.

This equipment should be installed and operated with minimum distance of 20 cm between the radiator and your body.

This transmitter must not be co-located or operating in conjunction with any other antenna or transmitter.

WEEE Disposal and Recycling Information



WEEE Disposal and Recycling Information All products bearing this symbol are waste electrical and electronic equipment (WEEE as in directive 2012/19/EU) which should not be mixed with unsorted household waste. Instead, you should protect human health and the environment by handing over your waste equipment to a designated collection point for the recycling of waste electrical and electronic equipment, appointed by the government or local authorities. Correct disposal and recycling will help prevent potential negative consequences to the environment and human health. Please contact the installer or local authorities for more information about the location as well as terms and conditions of such collection points.

Warning

Under normal use of condition, this equipment should be kept at a separation distance of at least 20 cm between the antenna and the body of the user.

Dans des conditions normales d' utilisation, cet équipement doit être maintenu à une distance d' au moins 20 cm entre l' antenne et le corps de l' utilisateur.

EU Declaration of Conformity

Hereby, Shenzhen Sonoff Technologies Co., Ltd. declares that the radio equipment type

MINI-ZBRBS is in compliance with Directive 2014/53/EU. The full text of the EU declaration of conformity is available at the following internet address:

<https://sonoff.tech/compliance/>

For CE frequency

EU Operating Frequency Range

Zigbee : 2405—2480 MHz

EU Output Power

Zigbee≤10dBm

Scatola	Manuale
PAP 21	PAP 22
Carta	Carta
RACCOLTA DIFFERENZIATA	
Verifica le disposizioni del tuo Comune.	
Separa le componenti e conferiscile in modo corretto.	



Manufacturer: Shenzhen Sonoff Technologies Co., Ltd.

Address: 3F & 6F, Bldg A, No. 663, Bulong Rd, Shenzhen, Guangdong, China

ZIP code: 518000

Service email: support@itead.cc

Website: sonoff.tech

Made in China



FR

**Cet appareil
se recycle**

À DÉPOSER
EN MAGASIN



OU

À DÉPOSER
EN DÉCHÈTERIE



Points de collecte sur www.quefairedemesdechets.fr
Privilégiez la réparation ou le don de votre appareil !

