

User Manual SAWF-08P (EN)



Air Quality Monitor

User Manual V1.1

Introduction

SAWF-08P is a smart indoor air monitor that supports 2.4GHz Wi-Fi connectivity. It is equipped with a high-definition LCD screen and provides real-time monitoring and display of CO2 concentration as well as temperature and humidity data. By connecting to eWeLink, users can access features such as sound and light alarms, receive air quality improvement suggestions, and view historical records via the app. Additionally, the SAWF-08P is compatible with the Matter economy and supports control through mainstream smart home platforms.

CO₂

CO2 Monitor



Temp & Humidity Monitor



Matter Compatibility



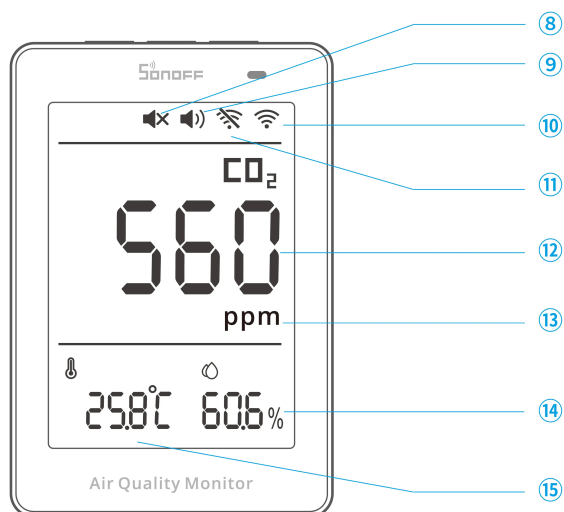
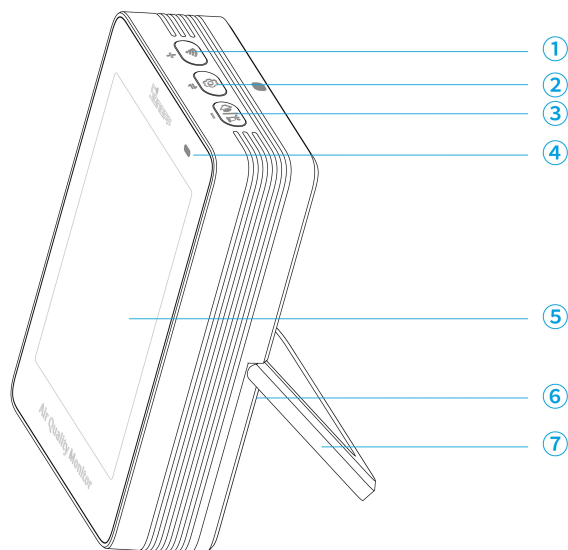
Sound & Light Alarm



Air Quality Tips



Historical Data Download



① Wi-Fi Button

- Press and hold for 5 seconds: The device enters pairing mode. (Pairing time 180 seconds)

② Settings Button

- Short-press ("temperature unit" flashes): Enter "Menu Mode".
 - Short-press the "⇌" button: Cycle through adjustable parameters (the current item being edited will flash).
 - Short-press the "+" / "-" button: Calibrate temperature and humidity values / Switch temperature unit
- Long-press for 10s: Clear all locally modified parameters by the user and restore the device to its default state.

③ Buzzer/Indicator Light Switch

- Short-press: Toggle the buzzer on/off.
- Long-press for 3s: Toggle the LED indicator light on/off.

⚠ When the buzzer goes off:

- Short-press once: Temporarily mutes the buzzer for a **30-minute silence period**.
- Short-press twice: Completely turns off the buzzer.

④ Multicolor LED Indicator

- ● Green: Air quality is good
- ● Yellow: Air quality is fair
- ● Red: Air quality is poor

⑤ LCD Display

⑥ Power Input Interface (Type-C)

⑦ Stand

⑧ Buzzer Off Icon

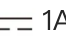
⑨ Buzzer On Icon

⑩ Wi-Fi Normal Icon

- Flashes slowly: Device is in pairing mode
- Keeps on: Pairing successful

- ⑪ Wi-Fi Error Icon
- ⑫ Monitored Value Display
- ⑬ Concentration Unit
- ⑭ Current Humidity
- ⑮ Current Temperature

Specification

Model	SAWF-08P
MCU	ESP32-D0WDR2-V3
Input	5V  1A
Interface type	Type-C
Wireless connection	Wi-Fi IEEE 802.11 b/g/n 2.4GHz
Net weight	101g
Color	White
Product dimension	70x103X26mm
Casing materials	PC+ABS
Applicable place	Indoor
Working temperature	-10°C~50°C
Temperature error range	±0.5 °C; ±1°F
Working humidity	5-95%RH, non-condensing
Humidity error range	±3%
Certification	CE/FCC/RoHS
FCC ID	2APN5-SAWF08P

Matter Ecosystem User Guide

1. Add Device

Open a Matter-compatible App to scan the Matter QR code on the Quick Guide or the device itself to add the device.



Add to Apple via
Matter



Add to Google via
Matter



Add to Alexa via
Matter



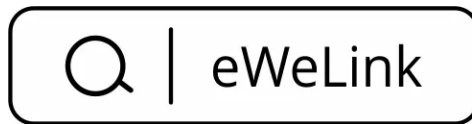
Add to SmartThings
via Matter

eWeLink Ecosystem User Guide

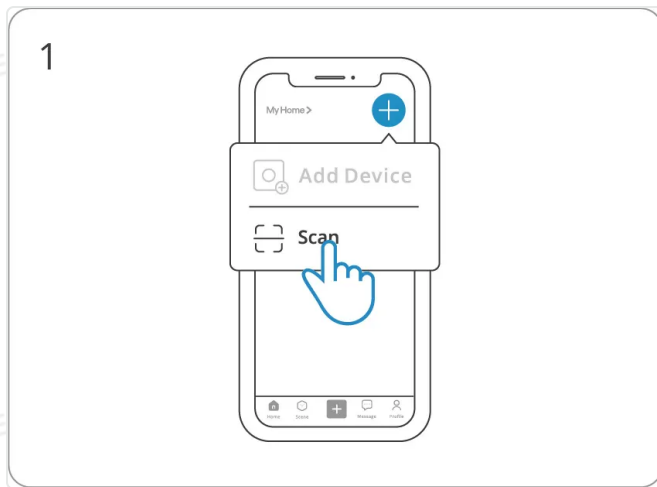
1. Add Device

① Download the eWeLink App

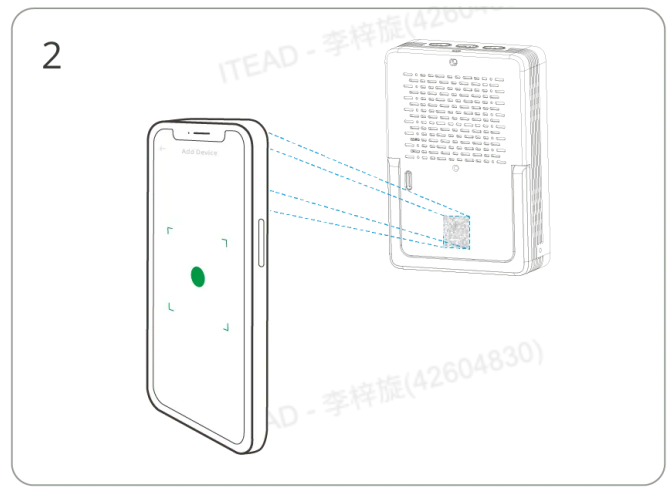
Please download the "eWeLink" App from **Google Play Store** or **Apple App Store**.



② Scan QR Code to Add Device



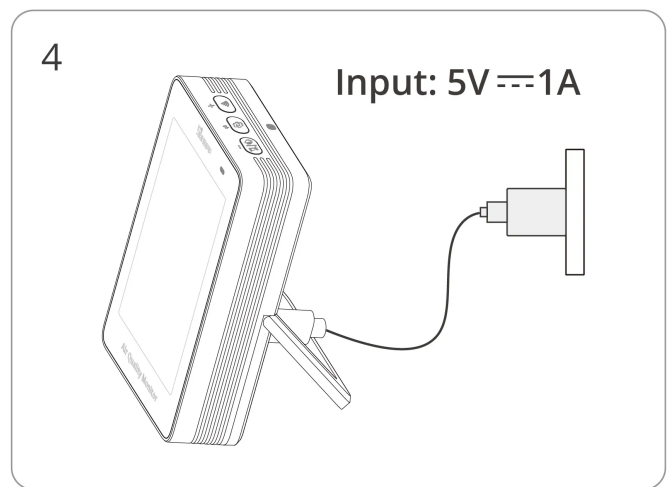
Enter "scan QR code" mode.



Scan the QR code on the device.

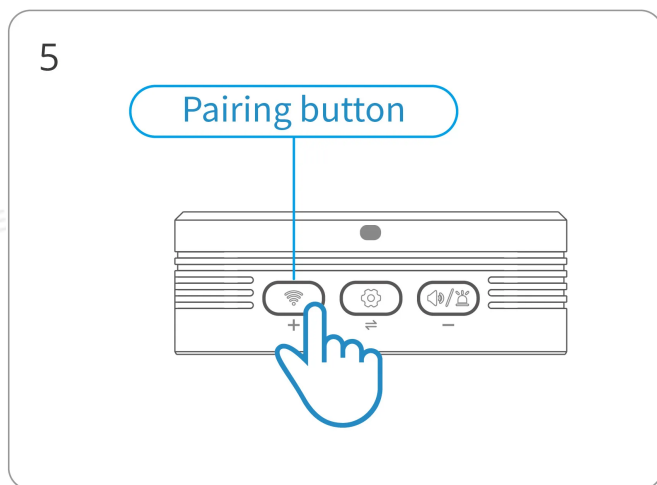


Select "Add Device".

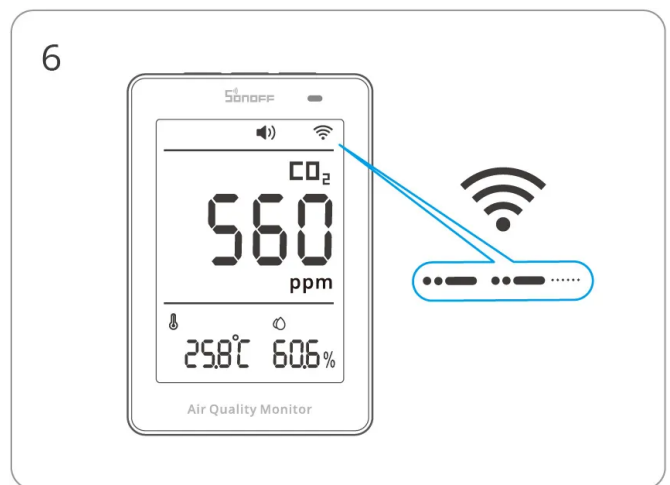


Power on the device.

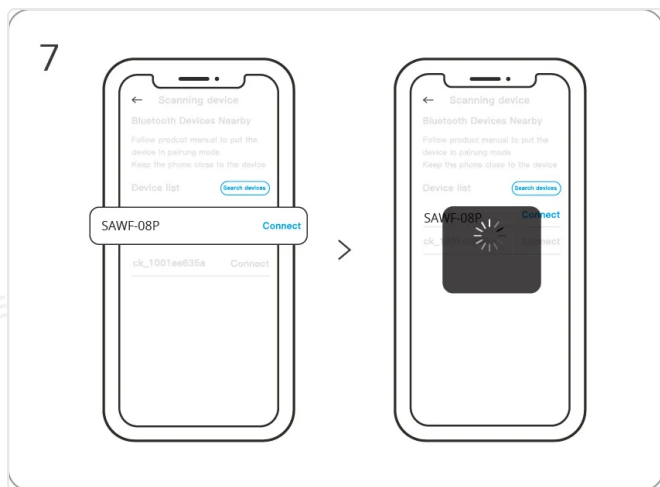
(Do not hold the Wi-Fi button while powering on the device. If this causes a malfunction, restart the device to recover.)



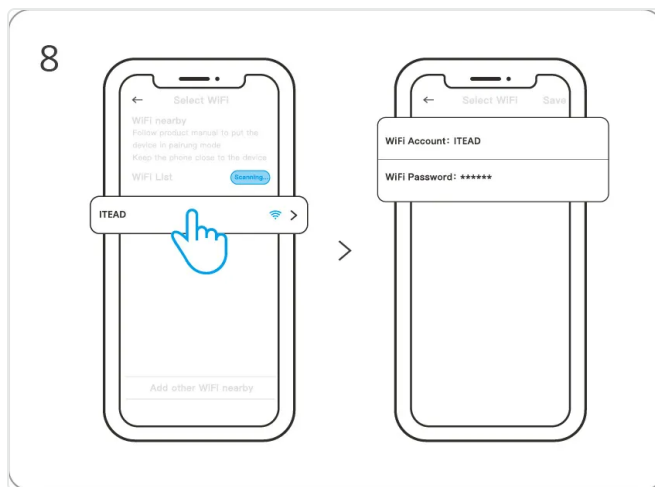
Long-press the button for 5 seconds.



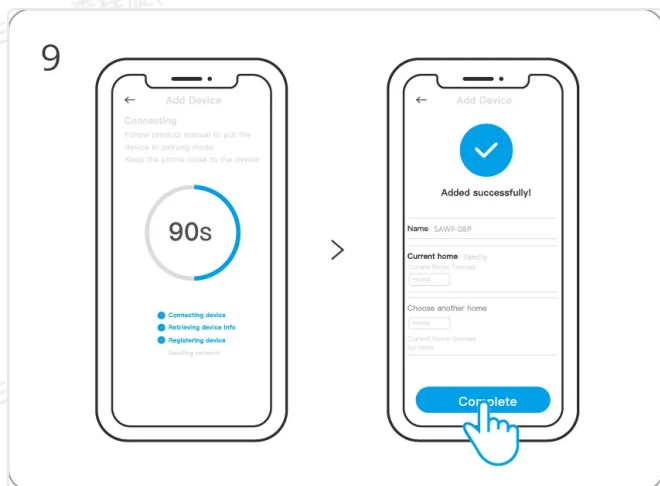
Check that the "Wi-Fi icon" flashes "two short and one long".



Search for the device and start connecting.



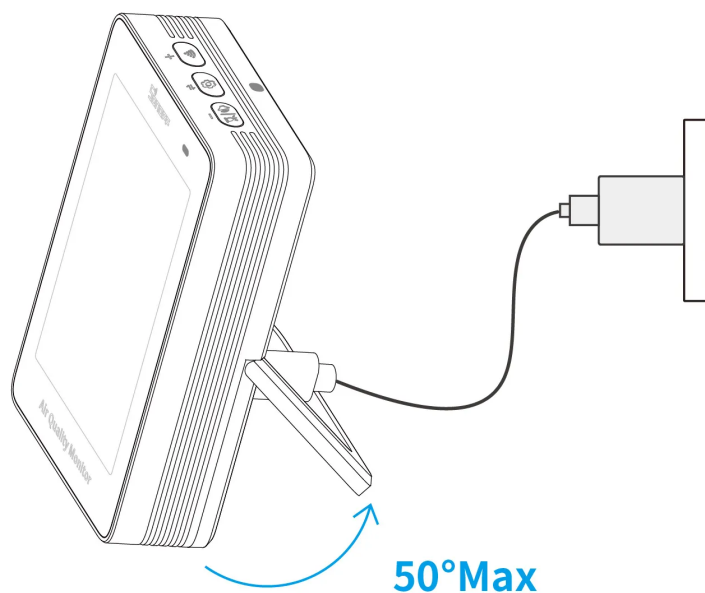
Select the "Wi-Fi" network and enter the password.



Device "Added completely".

Installation

This device supports opening the back stand and placing it on a desktop for use.



*Note:

1. Please ensure that the intake and exhaust ports are not blocked or covered to maintain accurate readings.



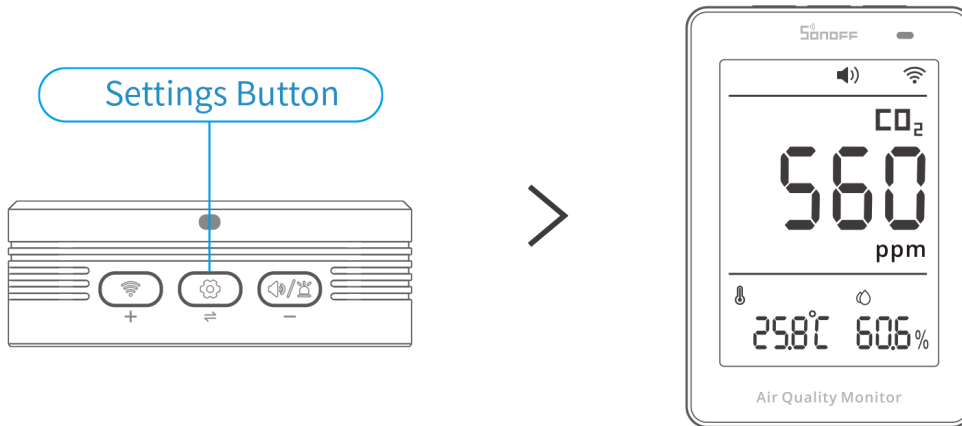
2. Do not place the device in a highly polluted environment for an extended period to avoid damaging the sensor.

Menu Mode Operation Guide

The menu mode allows for manual calibration of temperature/humidity and switching temperature unit(°C/°F) to improve accuracy.

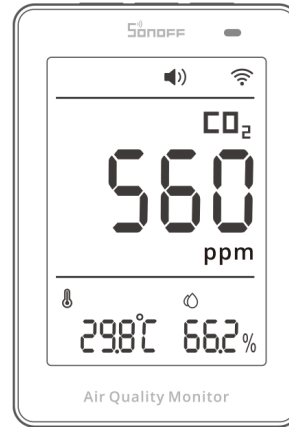
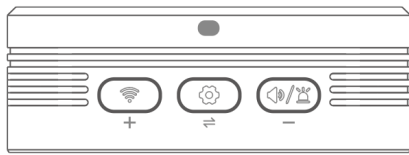
1. Enter "Menu Mode"

Short-press the "Settings Button". When the temperature value on the screen starts flashing, it indicates that the device has entered "Menu Mode".



2. Adjusting Local Display Data

- **Parameter Switching:** Short-press the "⇌" button to cycle through the following adjustable parameters in sequence (the currently edited item will flash): Temperature Unit (°C/°F), Humidity Value, Detection Mode (PM2.5/PM10), Temperature Value.
- **Parameter Adjustment:**
Short press the "+" or "-" button to:
 - Calibrate temperature and humidity.
 - Switch the temperature unit (°C/°F).



3. Saving Local Modifications

After cycling through all editable items, continue to short-press the "⇌" button to save all modifications and exit "Menu Mode".

4. Restoring Original Settings

Long-press the "Settings Button" for 10 seconds to clear all locally modified parameters (including temperature value, humidity value, temperature unit, buzzer status, and indicator light status) that were edited in the "Menu Mode", automatically restoring the device to its factory default state.

CO2 Concentration Threshold Definition

Good	≤1000 ppm	● Green LED Indicator
Fair	≤1500 ppm	● Yellow LED Indicator
Poor	≥1501 ppm	● Red LED Indicator

Default Comfort Level

Dry	Humidity ≤ 40% RH
-----	-------------------

Damp	Humidity \geq 60%RH
Cold	Temperature \leq 19°C/66.2°F
Hot	Temperature \geq 27°C/80.6°F

Factory Reset

- After deleting the device in the eWeLink app.
- A device that has been successfully networked in eWeLink can be successfully networked again using a different eWeLink account.
- A device that has been successfully networked in Matter can be successfully re-networked via Matter Bluetooth.

FCC compliance statement

Responsible Party Name: SONOFF TECHNOLOGY LLC

Address: 14777 NE 40th St, Suite 201 Bellevue, WA 98007

Email Address: usres@itead.cc FCC ID: 2APN5-SAWF08P

1. This device complies with part 15 of the FCC Rules. Operation is subject to the following two conditions:

- (1) This device may not cause harmful interference, and
- (2) This device must accept any interference received, including interference that may cause undesired operation.

2. Changes or modifications not expressly approved by the party responsible for compliance could void the user's authority to operate the equipment.

Note: This equipment has been tested and found to comply with the limits for a Class B digital device, pursuant to part 15 of the FCC Rules. These limits are designed to provide reasonable protection against harmful interference in a residential installation. This equipment generates, uses and can radiate radio frequency energy and, if not installed and used in accordance with the instructions, may cause harmful interference to radio communications. However, there is no guarantee that interference will not occur in a particular installation. If this equipment does cause harmful interference to radio or television

reception, which can be determined by turning the equipment off and on, the user is encouraged to try to correct the interference by one or more of the following measures:

- Reorient or relocate the receiving antenna.
- Increase the separation between the equipment and receiver.
- Connect the equipment into an outlet on a circuit different from that to which the receiver is connected.
- Consult the dealer or an experienced radio/TV technician for help.

FCC Radiation Exposure Statement:

This equipment complies with FCC radiation exposure limits set forth for an uncontrolled environment.

This equipment should be installed and operated with a minimum distance of 20 cm between the radiator and your body.

This transmitter must not be co-located or operating in conjunction with any other antenna or transmitter.

EU Declaration of Conformity

Hereby, Shenzhen Sonoff Technologies Co., Ltd. declares that the radio equipment type SAWF-08P is in compliance with Directive 2014/53/EU. The full text of the EU declaration of conformity is available at the following internet address: <https://sonoff.tech/compliance/>

For CE frequency

EU Operating Frequency Range:

Wi-Fi: 802.11 b/g/n20 2412–2472 MHz, 802.11 n40: 2422–2462 MHz

BLE: 2402–2480 MHz

EU Output Power:

Wi-Fi 2.4G \leq 20dBm

BLE $<$ 10dBm

Under normal use of condition, this equipment should be kept a separation distance of at least 20 cm between the antenna and the body of the user.

WEEE Disposal and Recycling Information



WEEE Disposal and Recycling Information All products bearing this symbol are waste electrical and electronic equipment (WEEE as in directive 2012/19/EU) which should not be mixed with unsorted household waste. Instead, you should protect human health and the environment by handing over your waste equipment to a designated collection point for the recycling of waste electrical and electronic equipment, appointed by the government or local authorities. Correct disposal and recycling will help prevent potential negative consequences to the environment and human health. Please contact the installer or local authorities for more information about the location as well as terms and conditions of such collection points.

Scatola	Manuale	Manuale	Borsa
PAP 21	PAP 22	EVA 7	CPE 7
Carta	Carta	Plastica	Plastica
RACCOLTA DIFFERENZIATA			
Verifica le disposizioni del tuo Comune.			
Separa le componenti e conferiscile in modo corretto.			

Warning

1. This product is not a toy and not intended for use by children. For adult use only.
2. The appliance is suitable for moderate climates only.
3. The ventilation must not be impaired by covering the appliance with items such as newspapers, table cloths, curtains, etc.
4. Naked flame sources, such as candles, must not be placed on the appliance.

SONOFF

Manufacturer: Shenzhen Sonoff Technologies Co., Ltd.

Address: 3F & 6F, Bldg A, No. 663, Bulong Rd, Shenzhen, Guangdong, 518000, China

Website: sonoff.tech

Service email: support@itead.cc

MADE IN CHINA



Points de collecte sur www.quefairedemesdechets.fr
Privilégiez la réparation ou le don de votre appareil !

