

# INSTRUCTION MANUAL

## PIR Motion Sensor E2

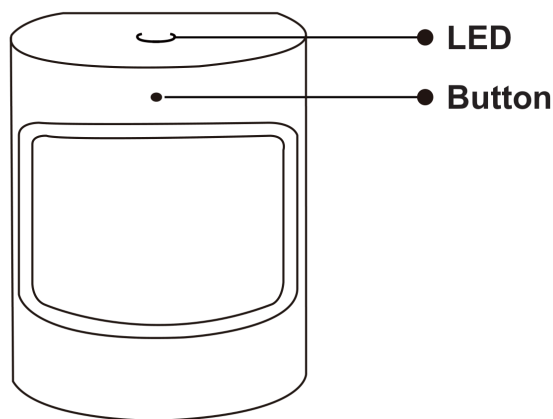
You will need Nous Smart Home App. Scan the QR code or download it from [direct link](#)



### PRECAUTIONS

- Read this manual carefully.
- Use the product within the temperature and humidity limits specified in the technical data sheet.
- Do not install the product near heat sources, such as radiators, etc.
- Do not allow the device to fall and be subject to mechanical loads.
- Do not use chemically active and abrasive detergents to clean the product. Use a damp flannel cloth for this.
- Do not disassemble the product yourself - diagnostics and repair of the device must be carried out only in a certified service center.

### Know about the Motion Sensor



#### Button

Reset or enter configuration mode: Press and hold the button for 5 seconds until the blue LED blinks, the device will enter configuration mode

#### LED

Blinking: The device enters Zigbee network configuration mode(preparing to connect the gateway)

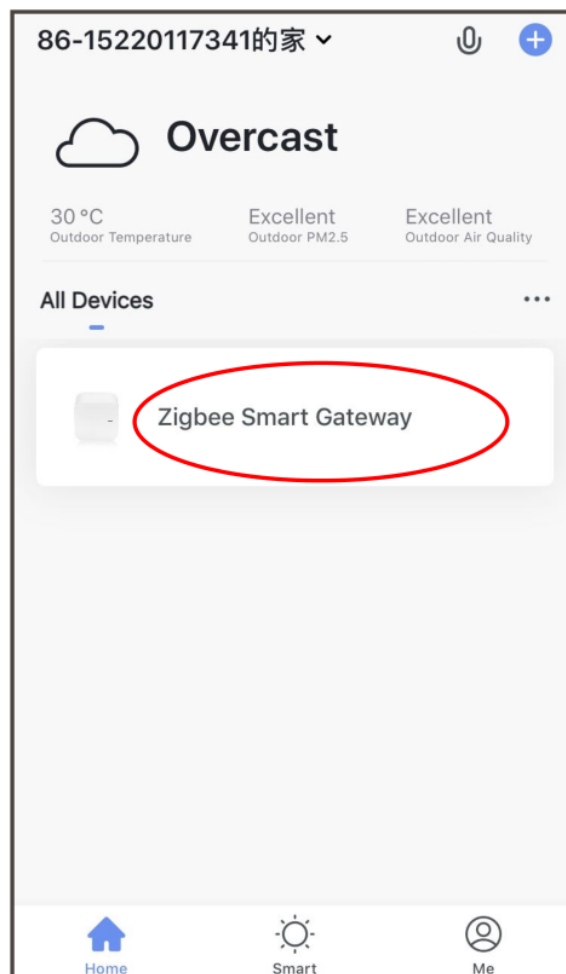
OFF: The device is under standby status

### Quick Installation Guide

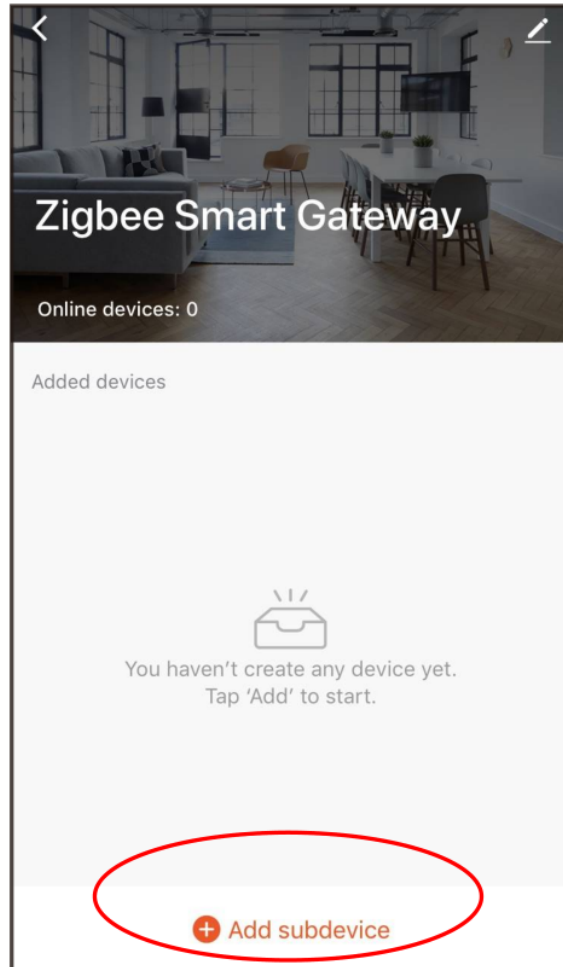
Note: Please make sure the gateway is added and on-line before the next step

- (If you have installed the NOUS Smart Home on your mobile phone,please go to step 2) Scan QR code or search NOUS Smart Home in APP Store or Google Play to install APP(new user must register account first).
- Open NOUS Smart Home app, on smart gateway homepage, Click: Zigbee Smart Gateway

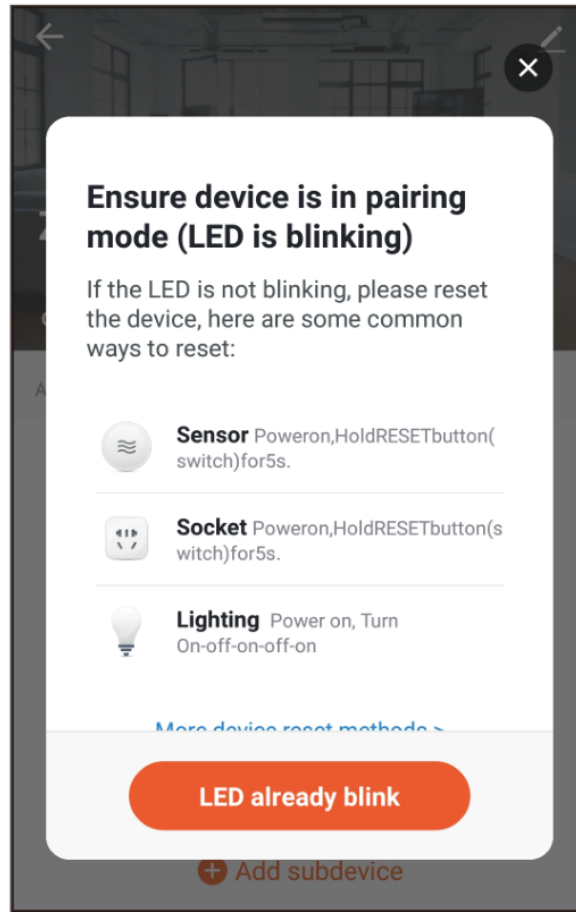
1



## 2 Click "+Add subdevice"

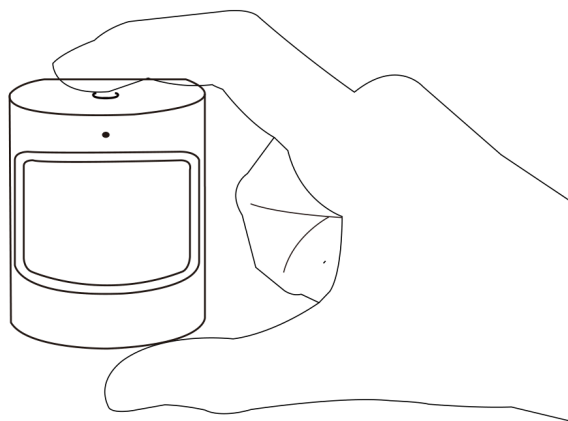


3



- Remove the insulation sheet and press the reset button for 5 seconds, till the blue LED blink, then click "LED already blink" on the app.

4

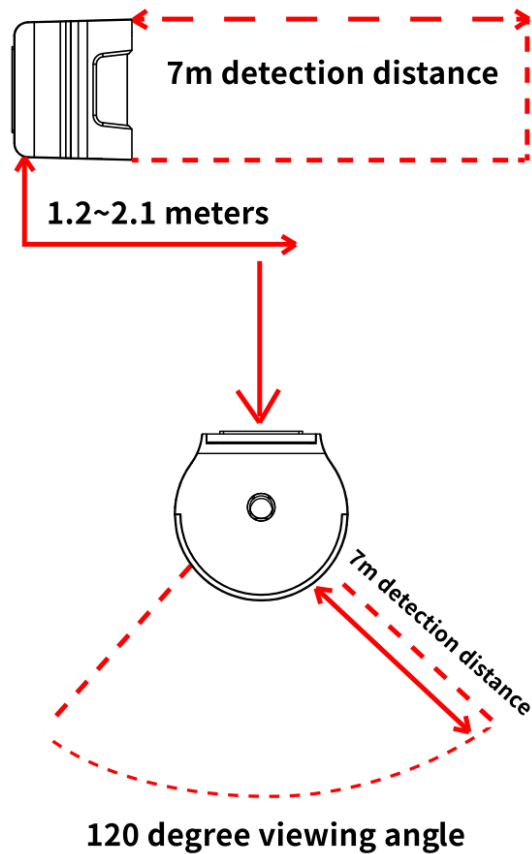


- Waiting for a few seconds, you can see the this device is shown and you may rename it.

5

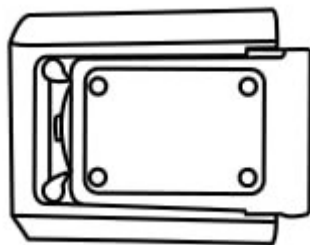


- Install the sensor at the place you need, The installation height should be 1.2-2.1 meters. The detect range is 120 degrees.



## Replace the battery

- Open the back cover of the device



- Inset the new battery to the battery compartment (Please notice the battery positive and negative)

