

INSTRUCTION MANUAL

Door/Window Sensor E3

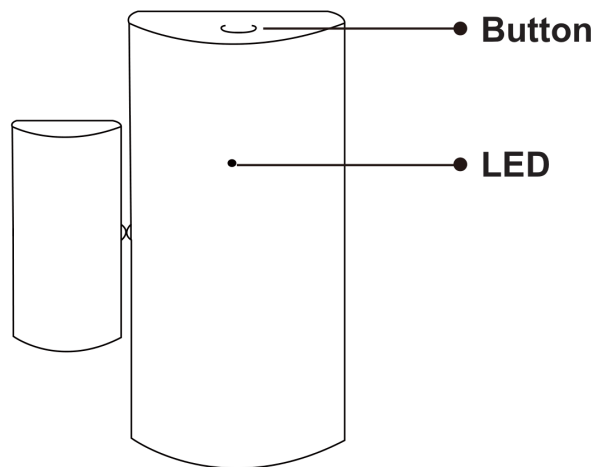
You will need Nous Smart Home App. Scan the QR code or download it from [direct link](#)



PRECAUTIONS

- Read this manual carefully.
- Use the product within the temperature and humidity limits specified in the technical data sheet.
- Do not install the product near heat sources, such as radiators, etc.
- Do not allow the device to fall and be subject to mechanical loads.
- Do not use chemically active and abrasive detergents to clean the product. Use a damp flannel cloth for this.
- Do not disassemble the product yourself - diagnostics and repair of the device must be carried out only in a certified service center.

Know about the Contact Sensor



Button

Reset or enter configuration mode: Press and hold the button for 5 seconds until the blue LED blinks, the device will enter configuration mode

LED

Blinking: The device enters Zigbee network configuration mode(preparing to connect the gateway)

OFF: The device is under standby status

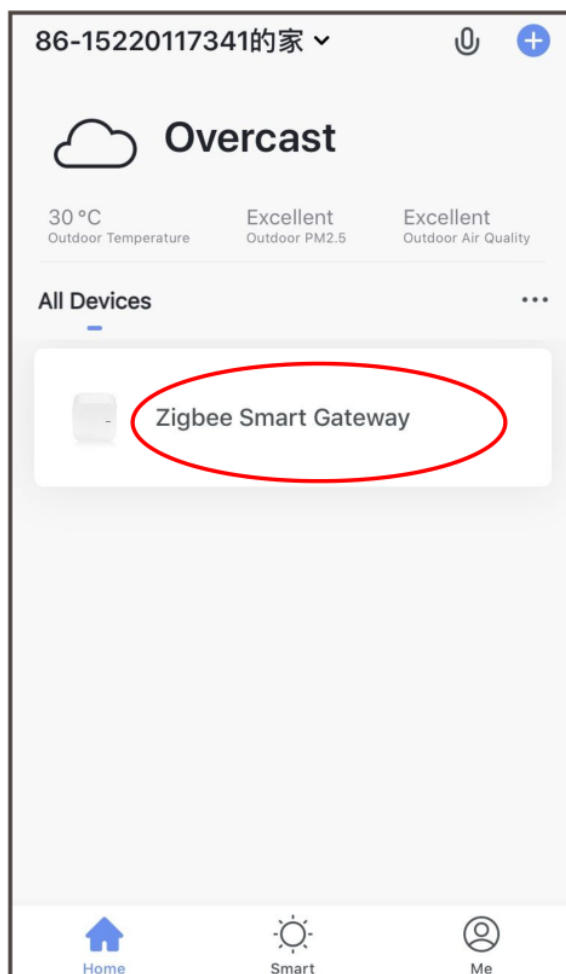
Quick Installation Guide

Note: Please make sure the gateway is added and on-line before the next step

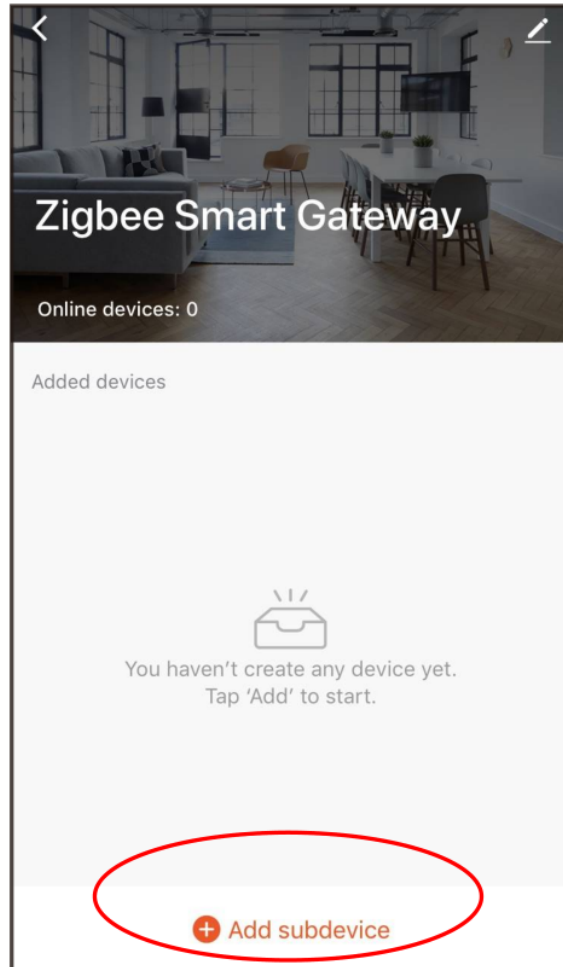
- (If you have installed the NOUS Smart Home on your mobile phone, please go to step 2) Scan QR code or search NOUS Smart Home in APP Store or Google Play to install APP(new user must register account first).

- Open NOUS Smart Home app, on smart gateway homepage, Click: Zigbee Smart Gateway

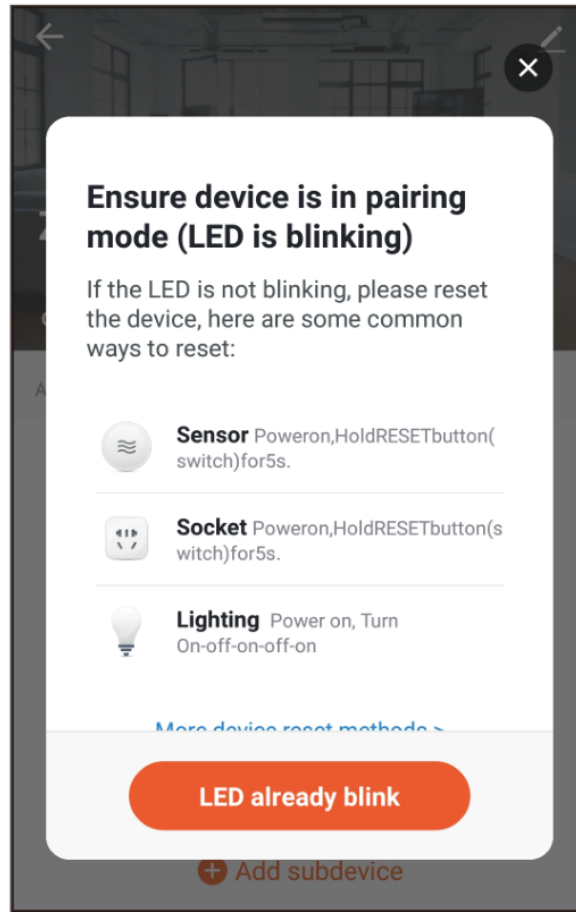
1



2 Click "+Add subdevice"

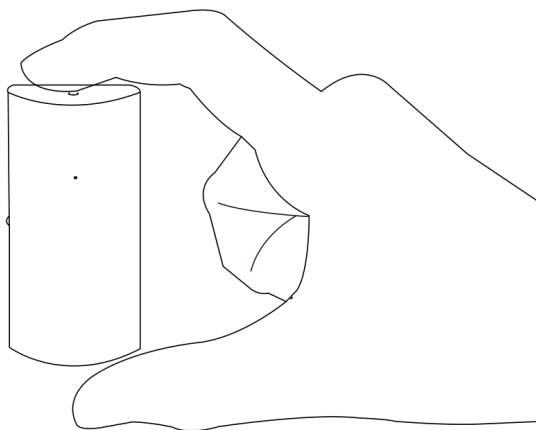


3



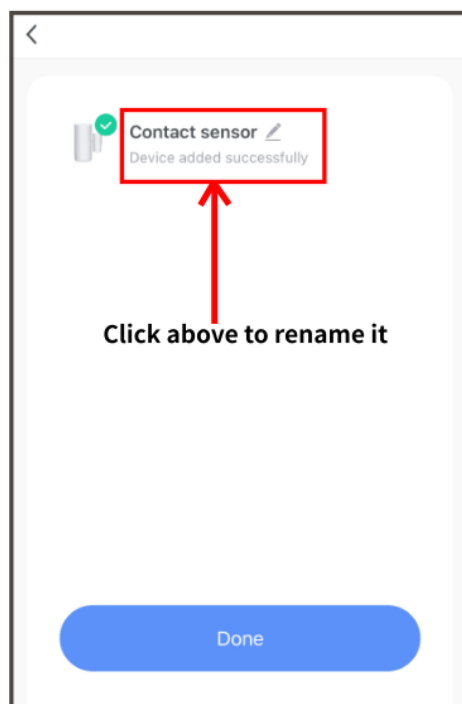
- Remove the insulation sheet and press the reset button for 5 seconds, till the blue LED blink, then click "LED already blink" on the app.

4

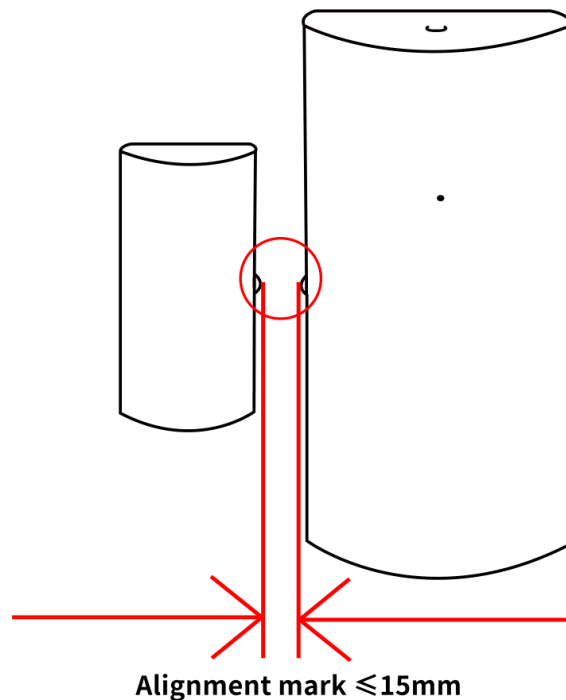


- Waiting for a few seconds, you can see the this device is shown and you may rename it.

5



- Put it where you need it.
The alignment marks must be close together as possible.
Must be $\leq 15\text{mm}$



Replace the battery

- Open the back cover of the device
- Inset the new battery to the battery compartment (Please notice the battery positive and negative)

